

## Style F-300

Y-Strainer

Cast Bronze (ASTM B 62)

250 lb. Threaded



## Style E-300

Y-Strainer

Cast Bronze (ASTM B 62)

250 lb. Solder Joint



## Cast Bronze Y-Strainer

### APPLICATIONS

Steam, water, oil or gas where protection from foreign matter in a pipeline is required.

### CONSTRUCTION

The Keckley Style F-300 & E-300 strainers are constructed from the finest bronze castings and are machined to exacting specifications.

Solder Joint Ends are in compliance with ASME B16.18 unless otherwise specified.

### FEATURES

The Keckley Style F-300 & E-300 strainers feature a machined seat in the body and cap for proper alignment and to ensure accurate reseating when servicing is required. These strainers have a straight threaded cap and are furnished standard with a NPT blow-off connection. The gasket is a flat copper gasket that is compressed between the body and cap for maximum strength and durability. Keckley Style F-300 & E-300 strainers can be furnished with a bronze blow-off plug upon request.

### SCREENS

Standard perforated brass screens are spot welded along the seam for maximum strength. Different size perforations and meshes are available in brass, stainless steel, and monel to meet specific media requirements. If media is not indicated, screens for *water* will be supplied.

### SELF CLEANING

Self cleaning is accomplished by opening the valve or drain plug connected to the blow-off port. **Warning:** See Maintenance Instructions on page S6 of the Strainer Information Section for additional precautions and detailed information on servicing the strainer.

### WORKING PRESSURES – NON SHOCK

NOM. RATING	MEDIA	1/4" to 3"	8 mm to 80 mm
250# (THREADED & SOLDER JOINT)	STEAM	235 PSI @ 400°F	1621 KPa @ 204°C
	W.O.G.	400 PSI @ 150°F 250 PSI @ 400°F	2759 KPa @ 66°C 1724 KPa @ 204°C

### GOVERNMENT/MILITARY SPECIFICATIONS

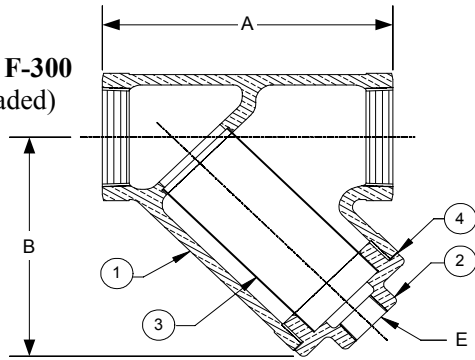
Specification: NAVSHIPS 810-841499.

Consult Factory for additional requirements.

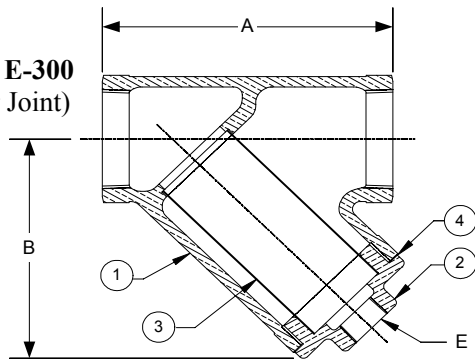
# Style F-300 & E-300

**Y-Strainer, 250 lb. Threaded & Solder Joint Cast Bronze (ASTM B 62)**

**STYLE F-300**  
(Threaded)



**STYLE E-300**  
(Solder Joint)



**PARTS LIST**

ITEM	DESCRIPTION	MATERIAL
1	BODY	BRONZE (B62)
2	CAP	BRONZE (B62)
3	SCREEN	BRASS
4	GASKET	COPPER

Optional: Blow-off Plug, Brass

**STANDARD SCREENS SUPPLIED**

SIZE		SCREEN GAGE	SCREEN PERFORATION					
in	mm		FOR STEAM		FOR LIQUID			
			in	mm	OPEN AREA	in	mm	OPEN AREA
1/4 to 3	8 to 80	24	1/32	0.8	29%	3/64	1.2	33%

Standard screens supplied are for **liquid service**, unless otherwise specified.  
Options: Other perforations, meshes, and screen materials are available.

SIZE		DIMENSIONS												WEIGHTS			
		A				B				E				F-300		E-300	
		F-300		E-300		F-300		E-300		F-300		E-300					
in	mm	in	mm	in	mm	in	mm	in	mm	in	mm	in	mm	lbs	kgs	lbs	kgs
1/4	8	2-9/16	65	2-9/16	65	2	51	2	51	1/8	6	1/8	6	0.75	0.3	0.75	0.3
3/8	10	2-9/16	65	2-9/16	65	2	51	2	51	1/8	6	1/8	6	0.75	0.3	0.75	0.3
1/2	15	2-15/16	75	2-9/16	65	2-1/8	54	2	51	1/8	6	1/8	6	1.00	0.5	0.75	0.3
3/4	20	3-3/8	86	2-15/16	75	2-11/16	68	2-1/8	54	1/4	8	1/8	6	1.50	0.7	1.00	0.5
1	25	4-1/8	105	3-3/8	86	3	76	2-11/16	68	1/4	8	1/4	8	2.50	1.1	1.50	0.7
1-1/4	32	4-13/16	122	4-1/8	105	3-3/4	95	3	76	3/8	10	1/4	8	4.25	1.9	2.50	1.1
1-1/2	40	5-3/8	137	4-13/16	122	4-3/8	111	3-3/4	95	1/2	15	3/8	10	6.25	2.8	4.25	1.9
2	50	6-5/8	168	5-3/8	137	5-1/2	140	4-3/8	111	3/4	20	1/2	15	11.00	5.0	6.25	2.8
2-1/2	65	8-1/4	210	6-5/8	168	6-3/4	171	5-1/2	140	1-1/4	32	3/4	20	17.75	8.1	11.00	5.0
3	80	9-5/8	244	8-1/4	210	7-1/8	181	6-3/4	171	1-1/2	40	1-1/4	32	25.75	11.7	17.75	8.1

\*Unless otherwise specified, Style E strainers are furnished with bore for copper tubing.  
\*\*For copper pipe dimensions, consult factory.  
Certified dimensional drawings are available upon request.  
†This table reflects only the nearest metric equivalents.

**FLOW COEFFICIENTS**

Size	C <sub>v</sub>	Size	C <sub>v</sub>	Size	C <sub>v</sub>
1/4"	9.5	1"	30	2-1/2"	129.7
3/8"	9.5	1-1/4"	44.9	3"	161.3
1/2"	9.5	1-1/2"	61	(The flow coefficients listed are for Style F-300)	
3/4"	18.7	2"	98		

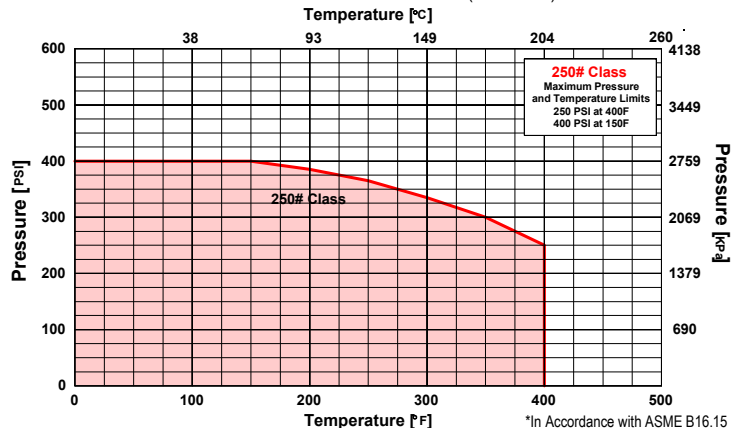
**TOTAL SCREEN AREA**

Size	(in <sup>2</sup> )	Size	(in <sup>2</sup> )	Size	(in <sup>2</sup> )
1/4"	2.36	1"	9.54	2-1/2"	45.09
3/8"	2.36	1-1/4"	14.11	3"	56.56
1/2"	3.44	1-1/2"	19.88	(Total screen area listed is for Style F-300)	
3/4"	5.67	2"	32.97		

\*See DETERMINING RATIOS on page S5 of the Strainer Information Section for calculating NET FREE AREA of the screen to inside pipe area.

**PRESSURE vs. TEMPERATURE CHART**

250# Threaded & Solder Joint Cast Bronze (ASTM B62)



\*In Accordance with ASME B16.15