

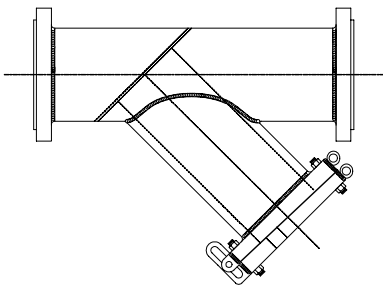
Style FSA

Fabricated Y-Strainer
Carbon Steel

Style FSSA

Fabricated Y-Strainer
Stainless Steel

150 lb. Flanged & Butt Weld
300 lb. Flanged & Butt Weld
600 lb. Flanged & Butt Weld



Fabricated Y-Strainer

APPLICATIONS

Steam, water, oil or gas where protection from foreign matter in a pipeline is required.

CONSTRUCTION

The Keckley Style FSA (carbon steel) & FSSA (stainless steel) fabricated Y-type strainers are normally supplied with a bolted (slip hinge) cover and are available with either flanged or butt weld connections. Flanges are raised face and drilled in accordance with ASME B16.5 and come standard with back faced boltholes.

Special dimensions are available.

FEATURES

The Style FSA and FSSA strainer screens are piloted through the use of machined grooves in both the body and cover to ensure proper alignment. The cover gasket is designed for specific pressure and temperature ratings. Keckley Style FSA and FSSA strainers have studs and nuts and are furnished with a blow down plug as standard.

Blind covers are available upon request.

SCREENS

Standard screens are perforated 304 stainless steel and are spot welded for maximum strength. Different size perforations and meshes are available in stainless steel, monel, and brass to meet specific media requirements. If media is not indicated, $\frac{1}{8}$ " perforated 304 stainless steel screens will be supplied.

SELF CLEANING

Self cleaning of the Style FSA and FSSA strainers are accomplished by opening the valve or drain plug connected to the blow off port. **Warning:** See Maintenance Instructions on page S6 of the Strainer Information Section for additional precautions and detailed information on servicing the strainer.

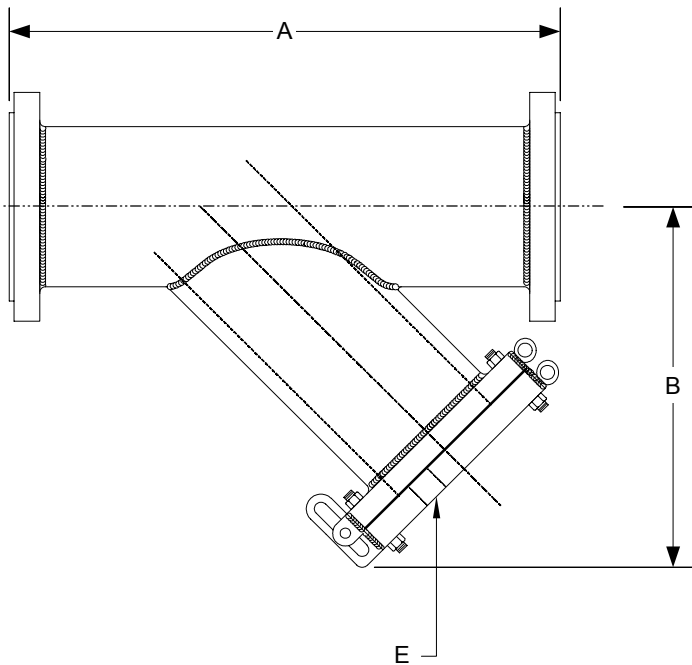
Style FSA

Fabricated Y-Strainer
Carbon Steel

Style FSSA

Fabricated Y-Strainer
Stainless Steel

Both Styles Available
150 lb., 300 lb. & 600 lb.
Flanged and Butt Weld



Parts List

- Body Material – As Required
- Connections – As Required
- Screen Perforations – As Required
- Special Features – As Required

SIZE		DIMENSIONS										WEIGHTS			
		A				B				E		150#		300#	
		150#		300#		150#		300#		150# / 300#					
in	mm	in	mm	in	mm	in	mm	in	mm	in	mm	lbs	kgs	lbs	kgs
10	250	30	762	31	787	24	610	24	610	1-1/2	40	390	177	600	272
12	300	35	889	36	914	26	660	27	686	1-1/2	40	560	254	840	381
14	350	39	991	41	1041	30	762	32	813	2	50	800	363	1100	499
16	400	45	1143	47	1194	34	864	36	914	2	50	1000	454	1500	680
18	450	46	1168	50	1270	34	864	36	914	2	50	1150	522	1775	805
20	500	52	1321	55	1397	38	965	40	1016	2	50	1400	635	2100	953
24	600	60	1524	62	1575	44	1118	46	1168	2	50	2000	907	3100	1406
30	750	75	1905	78	1981	56	1422	59	1499	2	50	3000	1361	5150	2336

Consult factory for sizes not shown.

†This table reflects only the nearest metric equivalents.

FLOW COEFFICIENTS

Size	C _v
10"	1549.5
12"	2166.2
14"	3130.7
16"	4664.4
18"	5850.2
20"	7747.6

Certified Dimensional Drawings and
Metric Drawings Available