

Style SD & SDV

Basket Strainer

Carbon Steel (ASTM A 216, Grade WCB)

150 lb. & 300 lb. Flanged



Cast Carbon Steel Basket Strainer

APPLICATIONS

Steam, water, oil or gas where protection from foreign matter in a pipeline is required.

CONSTRUCTION

The Keckley flanged Style SD & SDV strainers are constructed from rugged carbon steel castings and are machined to exacting specifications. These bodies have raised faced and drilled flanges that are in accordance with ASME B16.5.

FEATURES

The Keckley flanged Style SD & SDV strainers feature a machined basket seat to minimize particle bypass. All sizes have a bolted cover flange for ease in basket removal. The gasket is a flexible laminated sheet that is compressed between the body and cover (for maximum strength and durability) and designed for high pressure and high temperature service. Keckley Style SD strainers are furnished standard with a tapped and plugged NPT drain connection.

BASKETS

Standard baskets are 304 stainless steel and are spot welded for maximum strength. Different size perforations and meshes are available in stainless steel, monel, and brass to meet specific media requirements. If media is not indicated, screens for *water* will be supplied.

CLEANING

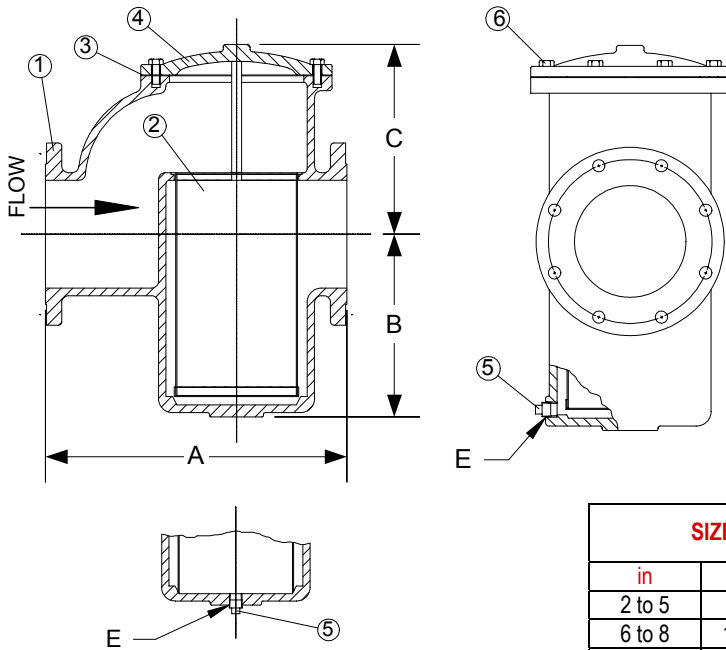
Cleaning of the Style SD strainer is accomplished by removing the cover and pulling out the basket. The Style SDV basket has an open bottom and is cleaned by blowing trapped material out through the blow-off connection similar to a "Y" type strainer. **Warning:** See Maintenance Instructions on page S6 of the Strainer Information Section for additional precautions and detailed information on servicing the strainer.

WORKING PRESSURES – NON SHOCK

NOM. RATING	MEDIA	2" to 12"	50 mm to 300 mm
150# R.F. & D. (FLANGE)	STEAM	150 PSI @ 565°F	1035 KPa @ 296°C
	W.O.G.	285 PSI @ 100°F	1966 KPa @ 38°C
NOM. RATING	MEDIA	2" to 12"	50 mm to 300 mm
300# R.F. & D. (FLANGE)	STEAM	300 PSI @ 838°F	2069 KPa @ 448°C
	W.O.G.	740 PSI @ 100°F	5104 KPa @ 38°C

Style SD & SDV

Basket Strainer, 150 lb. & 300 lb. Flanged Cast Carbon Steel (ASTM A 216, Grade WCB)



STYLE SDV HAS A BOTTOM BLOW OFF WITH AN OPEN BOTTOM BASKET.

PARTS LIST

ITEM	DESCRIPTION	MATERIAL
1	BODY	CARBON STEEL (ASTM A 216, GRADE WCB)
2	SCREEN (BASKET)	STAINLESS STEEL (304)
3	GASKET	COMPOSITION (HIGH TEMP./PRES.)
4	COVER	CARBON STEEL (ASTM A 216, GRADE WCB)
5	PIPE PLUG	STEEL
6	HEX HEAD CAP BOLTS	STEEL

STANDARD SCREENS SUPPLIED

SIZE		SCREEN GAGE	SCREEN PERFORATION					
in	mm		FOR STEAM		OPEN AREA	FOR LIQUID		OPEN AREA
			in	mm		in	mm	
2 to 5	50 to 125	24	1/16	1.6	30%	1/8	3.2	43%
6 to 8	150 to 200	24	1/8	3.2	43%	1/8	3.2	43%
10 to 12	250 to 300	20	1/8	3.2	43%	1/8	3.2	43%

Standard screens supplied are for **liquid service**, unless otherwise specified.
Options: Other perforations, meshes, and screen materials are available.

SIZE		DIMENSIONS										WEIGHTS			
		A				B		C		E		150#		300#	
		150#		300#		150# & 300#		150# & 300#		150# & 300#		lbs	kgs	lbs	kgs
in	mm	in	mm	in	mm	in	mm	in	mm	in	mm	lbs	kgs	lbs	kgs
2	50	8	203	8-1/2	216	3-15/16	100	5-1/4	133	1/2	15	26	12	32	15
2-1/2	65	9	229	9-5/8	244	4	102	6	152	1/2	15	37	17	46	21
3	80	10	254	10-3/4	273	5	127	7	178	1/2	15	50	23	60	27
4	100	13-1/4	337	13-7/8	352	6-3/4	171	9-1/2	241	1/2	15	129	59	132	60
5	125	16-7/8	429	17-3/4	451	9-7/8	251	12	305	3/4	20	185	84	215	98
6	150	17	432	17-7/8	454	9-7/8	251	12	305	3/4	20	193	88	229	104
8	200	22-1/4	565	23-1/4	591	13-3/4	349	14	356	3/4	20	380	172	445	202
10	250	25-3/4	654	27-1/8	689	17	432	18	457	3/4	20	757	343	817	371
12	300	29-11/16	754	31-1/2	800	20-5/8	524	21	533	2	50	1249	567	1399	635

Consult factory for sizes not shown.
Certified dimensional drawings are available upon request.
†This table reflects only the nearest metric equivalents.

FLOW COEFFICIENTS

Size	C _v	Size	C _v	Size	C _v
2"	55.7	4"	208.7	8"	784.3
2-1/2"	88.5	5"	354.2	10"	1208
3"	123.3	6"	430.1	12"	1868.9

TOTAL SCREEN AREA

Size	(in ²)	Size	(in ²)	Size	(in ²)
2"	39.45	4"	152.58	8"	529.98
2-1/2"	51.66	5"	295.54	10"	808.58
3"	84.84	6"	295.54	12"	1251.95

*See DETERMINING RATIOS on page S5 of the Strainer Information Section for calculating NET FREE AREA of the screen to inside pipe area.

PRESSURE vs. TEMPERATURE CHART

150# & 300# Flanged Cast Carbon Steel (ASTM A 216, Grade WCB)

