

# Style SGFV

Basket Strainer

Carbon Steel (ASTM A 216, Grade WCB)

150 lb. & 300 lb. Flanged



## Cast Carbon Steel Basket Strainer

### APPLICATIONS

Steam, water, oil or gas where protection from foreign matter in a pipeline is required.

### CONSTRUCTION

The Keckley Style SGFV strainers are constructed from rugged carbon steel castings and are machined to exacting specifications. These bodies have raised faced and drilled flanges that are in accordance with ASME B16.5. All flanges come standard with back-faced bolt holes.

### FEATURES

The Keckley Style SGFV strainer features a basket with an angular cutaway design to allow straight through flow and extremely low pressure loss. All sizes have a bolted top cover flange for ease in basket removal. The gasket is spiral wound 304 stainless steel and is compressed between the body and cover (for maximum strength and durability) and designed for high pressure and high temperature service. Keckley Style SGFV strainers have carbon steel hex head cap screws and furnished standard with a tapped and plugged NPT drain connection.

### BASKETS

Standard baskets are 304 stainless steel and are spot welded for maximum strength. Different size perforations and meshes are available in stainless steel, monel, and brass to meet specific media requirements. If media is not indicated, screens for *water* will be supplied.

### CLEANING

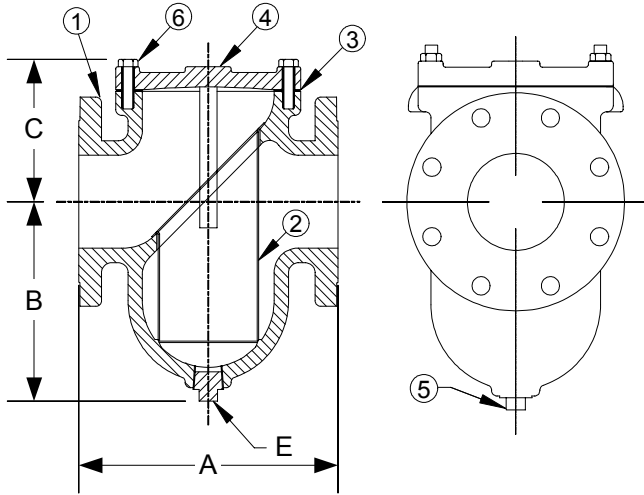
Cleaning of the Style SGFV strainer is accomplished by removing the cover and pulling out the basket. **Warning:** See Maintenance Instructions on page S6 of the Strainer Information Section for additional precautions and detailed information on servicing the strainer.

### WORKING PRESSURES – NON SHOCK

NOM. RATING	MEDIA	2" to 12"	50 mm to 300 mm
150# R.F. & D. (FLANGE)	STEAM	150 PSI @ 565°F	1035 KPa @ 296°C
	W.O.G.	285 PSI @ 100°F	1966 KPa @ 38°C
NOM. RATING	MEDIA	2" to 12"	50 mm to 300 mm
300# R.F. & D. (FLANGE)	STEAM	300 PSI @ 838°F	2069 KPa @ 448°C
	W.O.G.	740 PSI @ 100°F	5104 KPa @ 38°C

## Style SGFV

**Basket Strainer, 150 lb. & 300 lb. Flanged**  
**Cast Carbon Steel (ASTM A 216, Grade WCB)**



**PARTS LIST**

ITEM	DESCRIPTION	MATERIAL
1	BODY	CAST CARBON STEEL (ASTM A 216, GRADE WCB)
2	SCREEN (BASKET)	STAINLESS STEEL (304)
3	GASKET	STAINLESS STEEL – SPIRAL WOUND (304)
4	COVER	CAST CARBON STEEL (ASTM 216, GRADE WCB)
5	PIPE PLUG	CARBON STEEL
6	HEX HEAD CAP SCREW	CARBON STEEL (ASTM A 193, GRADE B7)

**STANDARD SCREENS SUPPLIED**

SIZE		SCREEN GAGE	SCREEN PERFORMANCE					
in	mm		FOR STEAM		FOR LIQUID			
			in	mm	AREA	in	mm	AREA
2 to 3	50 to 80	22	3/64	1.2	33%	1/16	1.6	30%
4 to 12	100 to 300	22	1/16	1.6	30%	1/8	3.2	43%

Standard screens supplied are for liquid service, unless otherwise specified.  
Options: Other perforations, meshes, and screen materials are available.

SIZE		DIMENSIONS															
		A				B				C				E			
		150#		300#		150#		300#		150#		300#		150#		300#	
in	mm	in	mm	in	mm	in	mm	in	mm	in	mm	in	mm	in	mm	in	mm
2	50	8-1/2	216	8-13/16	224	5-7/8	149	4-3/4	121	4-3/4	121	3-3/4	95	1/2	15	1	25
2-1/2	65	8	203	9	229	5-7/16	138	5-5/8	143	4-1/4	108	4-5/8	117	3/4	20	1	25
3	80	8-3/4	222	10-3/4	273	5-11/16	144	6-3/4	171	5-5/8	143	7-3/4	197	3/4	20	3/4	20
4	100	11-3/16	284	12	305	8-1/4	210	9-5/8	244	6-1/16	154	5-7/16	138	1	25	1	25
5	125	12-1/4	311	13-1/8	333	10-1/4	260	10-1/4	260	5-5/8	143	5-5/8	143	1	25	1	25
6	150	13-7/8	352	15-9/16	395	13	330	10-5/8	270	6-5/16	149	6-5/16	160	1-1/4	32	1	25
8	200	17-3/8	441	19-11/16	500	15-9/16	395	12-5/8	321	8-3/16	208	6-3/4	171	1-1/2	40	1	25
10	250	22	559	21-5/16	541	16	406	14-3/8	365	10-3/8	264	9-7/8	251	1-1/2	40	2	50
12	300	25	635	25-3/8	645	23-3/4	603	23-3/4	603	12-3/8	314	12-3/8	314	2	50	2	50

Larger sizes available upon request.  
Certified dimensional drawings are available upon request.  
†This table reflects only the nearest metric equivalents.

WEIGHTS									
Size	2"	2-1/2"	3"	4"	5"	6"	8"	10"	12"
150	lbs	30	35	39	69	110	125	270	450
	kgs	14	16	18	31	50	57	122	204
300	Lbs	32	42	56	88	126	150	295	500
	kgs	15	19	25	40	57	68	134	227

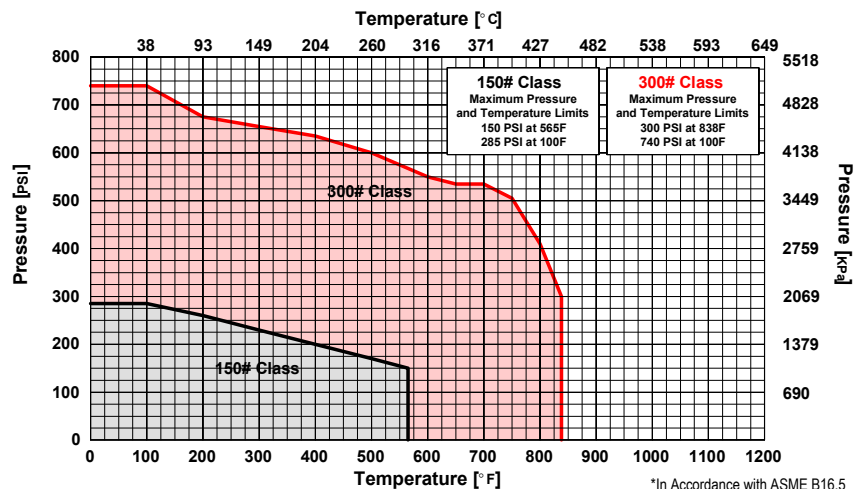
FLOW COEFFICIENTS					
Size	C <sub>v</sub>	Size	C <sub>v</sub>	Size	C <sub>v</sub>
2"	42.7	5"	442.7	10"	3051.6
3"	120.2	6"	743.1	12"	4980.6
4"	276.7	8"	1486.3		

TOTAL SCREEN AREA (150 LB.)					
Size	(in <sup>2</sup> )	Size	(in <sup>2</sup> )	Size	(in <sup>2</sup> )
2"	53.42	5"	129.0	10"	591.73
3"	54.53	6"	215.65	12"	1040.63
4"	117.94	8"	401.76		

\*See DETERMINING RATIOS on page S5 of the Strainer Information Section for calculating NET FREE AREA of the screen to inside pipe area.

**PRESSURE vs. TEMPERATURE CHART**

150# & 300# Flanged Cast Carbon Steel (ASTM A 216, Grade WCB)



\*In Accordance with ASME B16.5