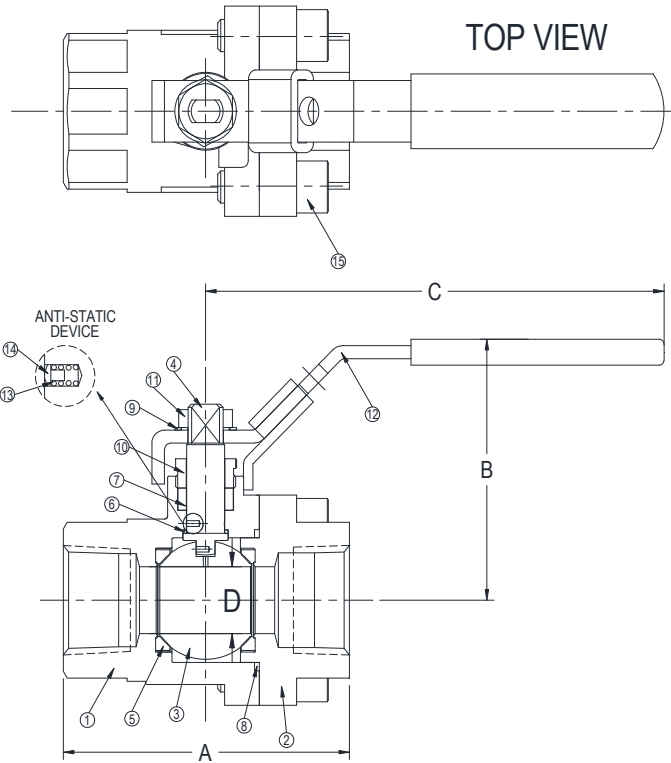


DRAWING NO.
AL 106560




PARTS LIST		
ITEM	DESCRIPTION	MATERIAL
1	Body	Carbon Steel (ASTM A 216 Gr. WCB)
2	Tailpiece	Carbon Steel (ASTM A 216 Gr. WCB)
3	Ball	Stainless Steel (ASTM A 276 Gr. 316)
4	Stem	Stainless Steel (ASTM A 276 Gr. 316)
5	Seat (2)+	R-PTFE
6	Thrust Washer	R-PTFE
7	Stem Packing	Graphite
8	Body Seal	Graphite
9	Spring Washer	Stainless Steel
10	Packing Gland	Stainless Steel (ASTM A 276 Gr. 316)
11	Lock Nut	Stainless Steel (ASTM A 276 Gr. 304)
12	Lock Handle	Carbon Steel (ASTM A 283 Gr. CS)
13	Spring	Stainless Steel (304)
14	Plunger	Stainless Steel (316)
15	Cap Bolt	Alloy Steel (ASTM A 193, B7)

+Optional PEEK Seats for High Temp Service are available.

Product Numbers†	SIZE (in)		DIMENSIONS (in)				Flow Coefficients C _v	Max Torque in/lb	WEIGHT lbs
	in (Port)	mm	A	B	C	D			
BVM2THFCSRGLL-025	1/4 (FP)	8	2.76	2.42	5.00	0.43	10	70	1.6
BVM2THRCRGLL-050	1/2 (RP)	15	2.76	2.42	5.00	0.43	10	70	1.5
BVM2THFCSRGLL-050	1/2 (FP)	15	2.76	2.42	5.00	0.50	18	90	1.6
BVM2THFCSRGLL-075	3/4 (FP)	20	3.56	3.17	5.71	0.81	32	130	3.6
BVM2THRCRGLL-100	1 (RP)	25	3.56	3.17	5.71	0.81	32	130	3.4

†See "Style BVM2 Product Number Configuration" for additional options.

BODY PRESSURE & TEMPERATURE RATINGS – NON SHOCK	
MEDIA	¼" to 1"
W.O.G.	3000 PSI @ 100°F
Saturated Steam (WSP)	200 PSI @ 388°F

 3400 CLEVELAND SKOKIE ILLINOIS	DRAWING NO. AL 106560
	PART NO.
DIMENSIONAL ASSEMBLY	SCALE: NTS
Style BVM2 NPT Ends	DATE: 04/26/2022
2-Piece Bolted Body Ball Valve	DR. BY DSF
MAT'L: (As Noted Above)	REQ. ---