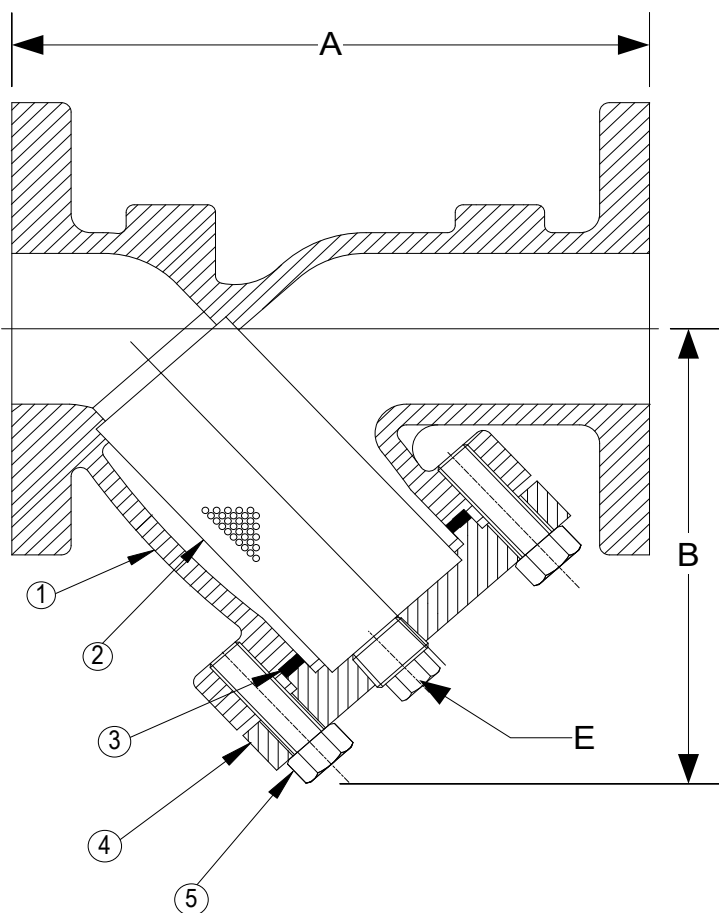


**DRAWING NO.**  
AL 90000



PARTS LIST		
ITEM	DESCRIPTION	MATERIAL
1	BODY	NICKEL ALUMINUM BRONZE (ASTM B 148, C95800)
2	SCEEN	STAINLESS STEEL (304)
3	GASKET	SPIRAL WOUND STAINLESS STEEL (304) -GRAPHITE FILLED
4	COVER	NICKEL ALUMINUM BRONZE (ASTM B 148, C95800)
5	HEX HEAD CAP SCREWS	STAINLESS STEEL (ASTM A 193, GRADE B8)

OPTIONAL: Blow-off Plug, Brass

Product Number†	SIZE	DIMENSIONS (in)			COVER		WEIGHT (lbs)
		A	B	E	No of Bolts	Size of Bolts	
1/222FFY-NA062P34-GB	1/2	5-7/8	3-1/4	3/8	4	3/8-16 x 1	7
3/42FFY-NA062P34-GB	3/4	7-3/8	3-3/4	1/2	4	3/8-16 x 1	13
12FFY-NA062P34-GB	1	7-3/8	4-5/16	1/2	4	3/8-16 x 1-3/8	13
11/42FFY-NA062P34-GB	1-1/4	6-5/8	4-5/16	1/2	4	3/8-16 x 1-3/8	17
11/22FFY-NA062P34-GB	1-1/2	6-11/16	4-5/16	1/2	4	3/8-16 x 1-3/8	17
22FFY-NA062P34-GB	2	7-7/8	5-1/4	1/2	4	1/2-13 x 1-1/2	28
21/22FFY-NA062P34-GB	2-1/2	9-3/4	6-1/2	1	4	5/8-11 x 1-3/4	38
32FFY-NA062P34-GB	3	10	7	1-1/4	4	5/8-11 x 1-3/4	64
42FFY-NA062P34-GB	4	12-1/8	8-1/4	1-1/2	4	5/8-11 x 2-3/16	84
52FFY-NA125P34-GB	5	15-1/2	11-1/4	2	8	5/8-11 x 2-3/16	139
62FFY-NA125P34-GB	6	18-1/2	13-1/2	2	8	3/4-10 x 2-3/8	160
82FFY-NA125P34-GB	8	24	16-1/2	2	12	3/4-10 x 2-1/2	296
102FFY-NA125P34-GB	10	27-5/8	19-3/8	2	12	3/4-10 x 2-5/8	408
122FFY-NA125P34-GB	12	32-1/2	22-5/8	2	16	3/4-10 x 2-7/8	798


†See "Style BA7 Product Number Configuration" for additional options.

Dimension and weights are for reference only. When required, request certified drawings. Face to face values tolerance in compliance with ASME B16.24.

BODY PRESSURE & TEMPERATURE RATINGS - NON SHOCK	
NOM. RATING	1/2" TO 12"
Class 150	195 PSI @ 100°F
	150 PSI @ 225°F

STANDARD SCREENS SUPPLIED				
SIZE	SCREEN PERFORATION			
	FOR LIQUID	OPEN AREA	FOR STEAM	OPEN AREA
in	in		in	
1/2 to 4	1/16	30%	3/64	33%
5 to 10	1/8	43%	3/64	33%
12	1/8	43%	1/16	30%

Standard screens supplied are for liquid service, unless otherwise specified. Options: Other perforations, meshes, and screen materials are available.

		DRAWING NO.
3400 CLEVELAND SKOKIE ILLINOIS		AL 90000
DIMENSIONAL ASSEMBLY		PART NO.
1/2" to 12" Class 150 FF Flg Style BA7		SCALE: NTS
		DATE: 12/05/2022
MAT'L: (As Noted Above)	REQ. ---	DR. BY DSF