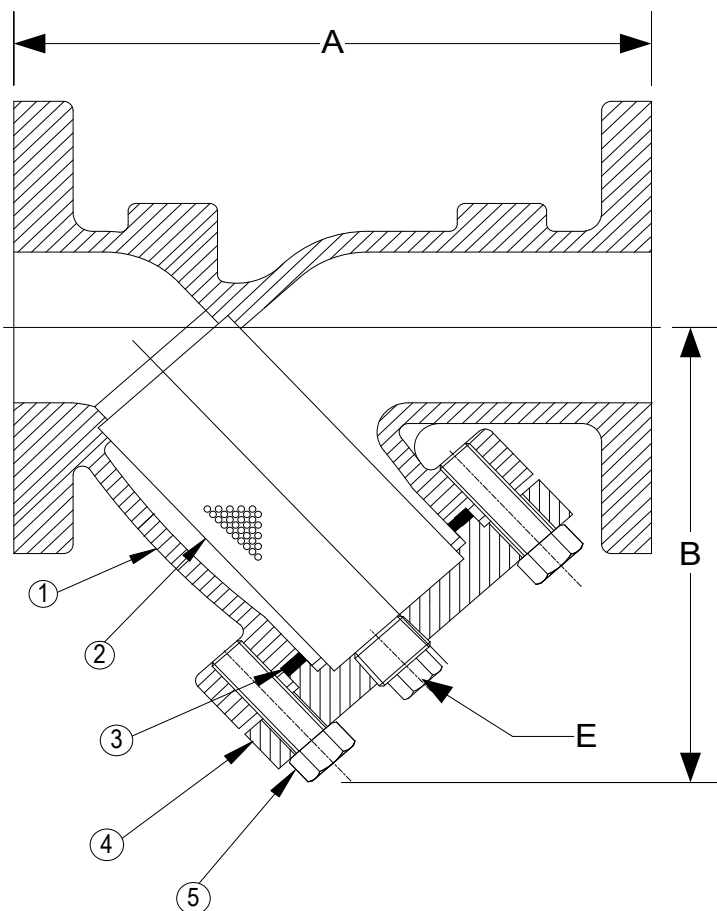


DRAWING NO.
AL 90040



PARTS LIST		
ITEM	DESCRIPTION	MATERIAL
1	BODY	NICKEL ALUMINUM BRONZE (ASTM B 148, C95800)
2	SCEEN	STAINLESS STEEL (304)
3	GASKET	SPIRAL WOUND STAINLESS STEEL (304) -GRAPHITE FILLED
4	COVER	NICKEL ALUMINUM BRONZE (ASTM B 148, C95800)
5	HEX HEAD CAP SCREWS	STAINLESS STEEL (ASTM A 193, GRADE B8)

OPTIONAL: Blow-off Plug, Brass

Product Number [†]	SIZE	DIMENSIONS (in)			WEIGHT (lbs)
		A	B	E	
1/222FFY-NA062P34-GB	1/2	6	3-1/4	3/8	12
3/42FFY-NA062P34-GB	3/4	7-13/16	3-3/4	1/2	18
12FFY-NA062P34-GB	1	7-13/16	3-5/8	1/2	18
11/42FFY-NA062P34-GB	1-1/4	8	4-1/2	1/2	26
11/22FFY-NA062P34-GB	1-1/2	8-1/8	4-3/4	1/2	26
22FFY-NA062P34-GB	2	9	6	1/2	28
21/22FFY-NA062P34-GB	2-1/2	10-5/8	7-3/8	1	48
32FFY-NA062P34-GB	3	12-1/2	9-1/16	1-1/4	75
42FFY-NA062P34-GB	4	15-1/8	10-7/8	1-1/2	110
52FFY-NA125P34-GB	5	18-5/8	13-9/16	2	164
62FFY-NA125P34-GB	6	19-1/8	15-7/8	2	212
82FFY-NA125P34-GB	8	25-3/16	16-1/2	2	359
102FFY-NA125P34-GB	10	29-1/8	19-3/8	2	493
122FFY-NA125P34-GB	12	34	22-5/8	2	938

[†]See "Style BA7 Product Number Configuration" for additional options.

Dimension and weights are for reference only. When required, request certified drawings. Face to face values tolerance in compliance with ASME B16.24.

BODY PRESSURE & TEMPERATURE RATINGS - NON SHOCK

NOM. RATING	1/2" TO 12"
Class 300	515 PSI @ 100F
	360 PSI @ 500F

STANDARD SCREENS SUPPLIED

SIZE	SCREEN PERFORATION			
	FOR LIQUID	OPEN AREA	FOR STEAM	OPEN AREA
in	in		in	
1/2 to 4	1/16	30%	3/64	33%
5 to 10	1/8	43%	3/64	33%
12	1/8	43%	1/16	30%

Standard screens supplied are for **liquid service**, unless otherwise specified. Options: Other perforations, meshes, and screen materials are available.



3400 CLEVELAND

SKOKIE ILLINOIS

DRAWING NO.

AL 90040

DIMENSIONAL ASSEMBLY

PART NO.

1/2" to 12" Class 300 FF Flg Style BA7

SCALE: NTS

DATE: 12/05/2022

MAT'L: (As Noted Above)

REQ. ---

DR. BY DSF