

# Style SA7

Y-Strainer

Carbon Steel (ASTM A 216, Grade WCB)

150 lb. & 300 lb. Butt Weld



## Cast Carbon Steel Y-Strainer

### APPLICATIONS

Steam, water, oil or gas where protection from foreign matter in a pipeline is required.

### CONSTRUCTION

The Keckley Style SA7 strainers are constructed from rugged carbon steel castings and are machined to exacting specifications.

Style SA7 butt weld connections will be machined to match schedule 40 pipe.

### FEATURES

The Keckley Style SA7 strainer features a machined groove in both the body and cover for proper screen alignment and to ensure accurate reseating when servicing is required. The gasket is 304 stainless steel spiral wound and is compressed between the body and cover (for maximum strength and durability) and designed for high pressure and high temperature service. All Keckley Style SA7 strainers have cap screws and can be furnished with a steel blow-off plug upon request.

Blind covers are available upon request.

### SCREENS

Standard perforated 304 stainless steel screens are spot welded along the seam for maximum strength. Different size perforations and meshes are available in stainless steel, monel, and brass to meet specific media requirements. If media is not indicated, screens for *liquid* will be supplied.

### SELF CLEANING

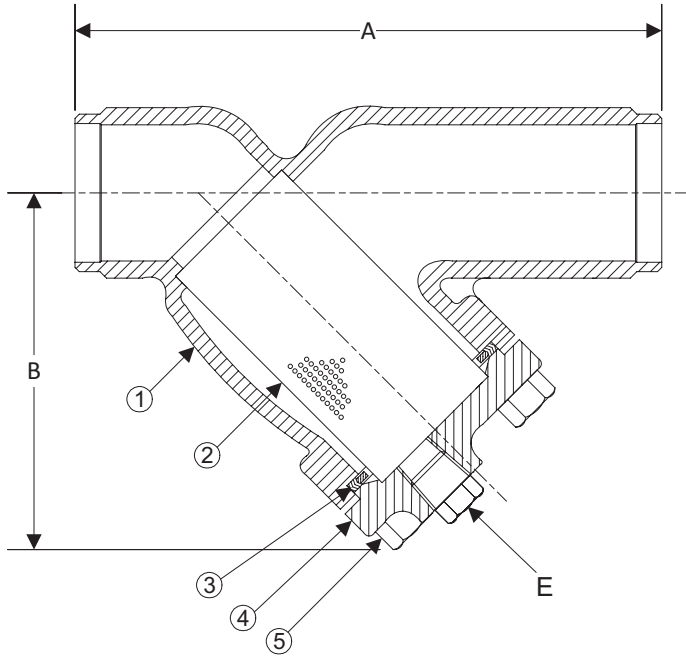
Self cleaning is accomplished by opening the valve or drain plug connected to the blow-off port. **Warning:** See Maintenance Instructions on page S6 of the Strainer Information Section for additional precautions and detailed information on servicing the strainer.

### WORKING PRESSURES - NON SHOCK

NOM. RATING	MEDIA	1/2" to 12"	15 mm to 300 mm
150# (BUTT WELD)	STEAM	150 PSI @ 565°F	1035 KPa @ 296°C
	W.O.G.	285 PSI @ 100°F	1966 KPa @ 38°C
NOM. RATING	MEDIA	1/2" to 12"	15 mm to 300 mm
300# (BUTT WELD)	STEAM	300 PSI @ 838°F	2069 KPa @ 448°C
	W.O.G.	740 PSI @ 100°F	5104 KPa @ 38°C

# Style SA7

Y-Strainer, 150 lb. & 300 lb. Butt Weld  
Carbon Steel (ASTM A 216, Grade WCB)



**PARTS LIST**

ITEM	DESCRIPTION	MATERIAL
1*	Body	Carbon Steel (ASTM A 216, Grade WCB)
2	Screen	Stainless Steel (304)
3	Gasket	Spiral Wound Stainless Steel (304)
4	Cover	Carbon Steel (ASTM A 216, Grade WCB)
5	Hex Head Cap Screw	Carbon Steel (ASTM A 193, Grade B7)

Optional: Blow-off Plug, Carbon Steel.

\*Optional Body Materials Available in LCB, WC6, and WC9.

**STANDARD SCREENS SUPPLIED**

SIZE		SCREEN PERFORATION					
		FOR LIQUID		OPEN AREA	FOR STEAM		OPEN AREA
in	mm	in	mm		in	mm	
1/2 to 4	15 to 100	1/16	1.6	30%	3/64	1.2	33%
5 to 10	125 to 250	1/8	3.2	43%	3/64	1.2	33%
12	300	1/8	3.2	43%	1/16	1.6	30%

Standard screens supplied are for **liquid service**, unless otherwise specified.

Options: Other perforations, meshes, and screen materials are available.

SIZE		DIMENSIONS										WEIGHTS			
		A				B				E		150#		300#	
		in	mm	in	mm	in	mm	in	mm	in	mm	in	mm	lbs	kgs
1/2	15	6-1/2	165	6-1/8	156	3-3/4	95	3-3/4	95	3/8	10	6	2.72	6	2.72
3/4	20	7-3/8	187	7-3/4	197	4-1/4	108	4-1/4	108	1/2	15	8	3.63	10	4.53
1	25	7-3/8	187	7-7/8	200	4-1/4	108	4-1/4	108	1/2	15	8	3.63	10	4.53
1-1/4	32	7	178	8-1/8	206	5-1/8	130	5-1/8	130	1/2	15	10	4.53	15	6.80
1-1/2	40	7-1/8	181	8-1/4	210	5-1/8	130	5-1/8	130	1/2	15	11	4.99	15	6.80
2	50	7-7/8	200	9-1/2	241	6	152	6	152	1/2	15	14	5.93	16	6.92
2-1/2	65	9-3/4	248	10-3/8	264	7	178	7	178	1	25	19	8.56	23	10.06
3	80	10-1/16	256	12	305	7-7/16	189	7-5/16	186	1	25	21	9.46	50	22.65
4	100	12-1/8	308	14-1/2	368	8-15/16	227	8-15/16	227	1-1/2	40	37	16.77	57	25.80
5	125	15-1/2	394	19-5/16	491	13-1/32	331	13-1/32	331	2	50	84	37.85	145	65.36
6	150	18-1/2	470	19-5/16	491	13-1/4	337	13-1/4	337	2	50	104	46.87	145	65.36
8	200	21-3/8	543	23-3/8	594	15-1/2	394	15-1/2	394	2	50	149	67.51	247	111.80
10	250	26	660	27-3/8	695	18-7/16	468	18-7/16	468	2	50	261	118.25	346	156.52
12	300	29-7/8	759	32	813	21-5/8	549	21-5/8	549	2	50	452	204.68	575	260.58

†This table reflects only the nearest metric equivalents.

Dimensions and weights are for reference only. When required, request certified drawings.

Face to face values have a tolerance in compliance with ASME B16.10.

**TOTAL SCREEN AREA**

Size	(in <sup>2</sup> )	Size	(in <sup>2</sup> )	Size	(in <sup>2</sup> )	Size	(in <sup>2</sup> )
1/2"	6.46	1-1/2"	18.68	4"	91.89	10"	532.80
3/4"	12.32	2"	30.28	5"	209.41	12"	600.71
1"	12.32	2-1/2"	46.91	6"	241.18	(Total screen area listed for 150 lb. class only)	
1-1/4"	18.68	3"	57.62	8"	342.86		

\*See DETERMINING RATIOS on page S5 of the Strainer Information Section for calculating NET FREE AREA of the screen to inside pipe area.

**PRESSURE vs. TEMPERATURE CHART**

150# & 300# Flanged Carbon Steel (ASTM A 216, Grade WCB)

