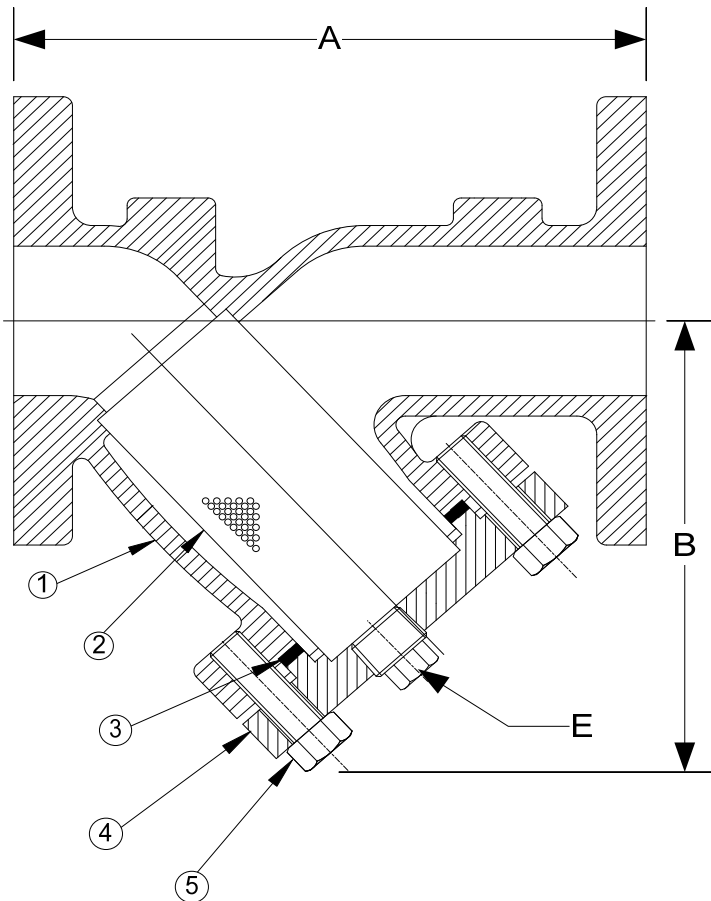


DRAWING NO.
AL 90000

BODY PRESSURE & TEMPERATURE RATINGS – NON SHOCK		
NOM. RATING	MEDIA	1/2" to 12"
150# F.F. & D. (STANDARD FLANGE)	STEAM	150 PSI @ 225°F
	W.O.G.	195 PSI @ 100°F



PARTS LIST		
ITEM	DESCRIPTION	MATERIAL
1	BODY	NICKEL ALUMINUM BRONZE (ASTM B 148, C95800)
2	SCREEN	STAINLESS STEEL (304)
3	GASKET	SPIRAL WOUND STAINLESS STEEL (304) –GRAPHITE FILLED
4	COVER	NICKEL ALUMINUM BRONZE (ASTM B 148, C95800)
5	HEX HEAD CAP SCREWS	STAINLESS STEEL (ASTM A 193, GRADE B8)

Optional: Blow-off Plug, Brass

Product Number†	SIZE	DIMENSIONS (in)			COVER		WEIGHT (lbs)
		A	B	E	No. of Bolts	Size of Bolts	
1/22FFY-NA062P34-GB	1/2	5-7/8	3-1/4	3/8	4	3/8-16 x 1	7
3/42FFY-NA062P34-GB	3/4	7-3/8	3-3/4	1/2	4	3/8-16 x 1	13
12FFY-NA062P34-GB	1	7-3/8	4-5/16	1/2	4	3/8-16 x 1-3/8	13
11/42FFY-NA062P34-GB	1-1/4	6-5/8	4-5/16	1/2	4	3/8-16 x 1-3/8	17
11/22FFY-NA062P34-GB	1-1/2	6-11/16	4-5/16	1/2	4	3/8-16 x 1-3/8	17
22FFY-NA062P34-GB	2	7-7/8	5-1/4	1/2	4	1/2-13 x 1-1/2	28
21/22FFY-NA062P34-GB	2-1/2	9-3/4	6-1/2	1	4	5/8-11 x 1-3/4	38
32FFY-NA062P34-GB	3	10	7	1-1/4	4	5/8-11 x 1-3/4	64
42FFY-NA062P34-GB	4	12-1/8	8-1/4	1-1/2	4	5/8-11 x 2-3/16	84
52FFY-NA125P34-GB	5	15-1/2	11-1/4	2	8	5/8-11 x 2-3/16	139
62FFY-NA125P34-GB	6	18-1/2	13-1/2	2	8	3/4-10 x 2-3/8	160
82FFY-NA125P34-GB	8	24	16-1/2	2	12	3/4-10 x 2-1/2	296
102FFY-NA125P34-GB	10	27-5/8	19-3/8	2	12	3/4-10 x 2-5/8	408
122FFY-NA125P34-GB	12	32-1/2	22-5/8	2	16	3/4-10 x 2-7/8	798

†See "Style BA7 Product Number Configuration" for additional options.

Dimensions and weights are for reference only. When required, request certified drawings.

Face to face values tolerance in compliance with ASME B16.24.

STANDARD SCREENS SUPPLIED

SIZE	SCREEN PERFORATION			
	FOR LIQUID	OPEN AREA	FOR STEAM	OPEN AREA
in	in		in	
2 to 4	1/16	30%	3/64	33%
5 to 10	1/8	43%	3/64	33%
12	1/8	43%	1/16	30%

Standard screens supplied are for liquid service, unless otherwise specified.

Options: Other perforations, meshes, and screen materials are available.

KECKLEY

3400 CLEVELAND SKOKIE ILLINOIS

DRAWING NO.

AL 90000

DIMENSIONAL ASSEMBLY

PART NO.

1/2" to 12" 150# Flg Style BA7

SCALE: NTS

DATE: 09/21/2020

MAT'L: (As Noted Above)

REQ. ---

DR. BY DSF