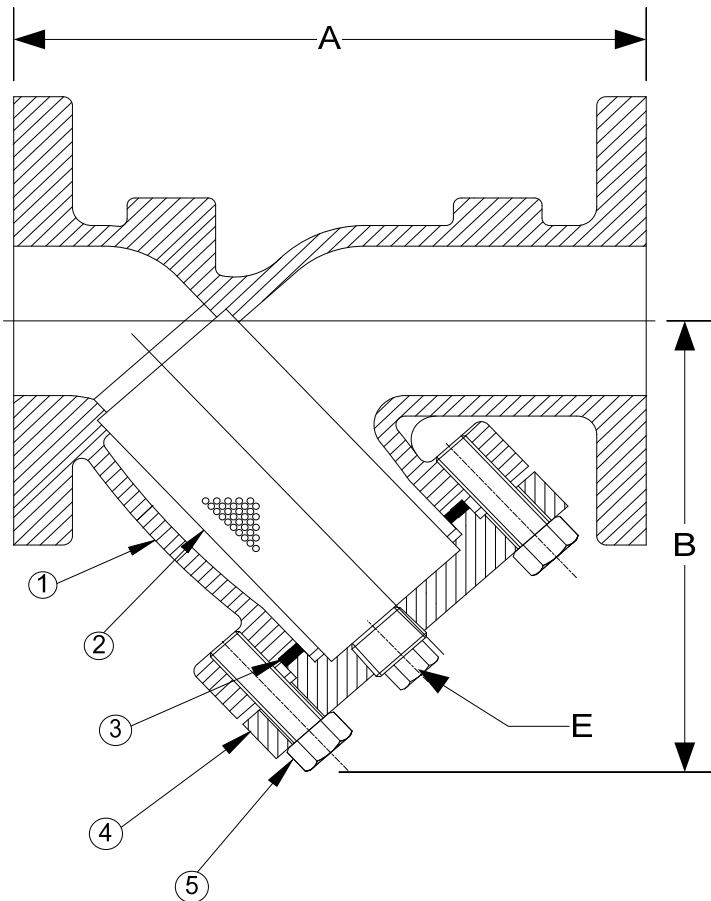


DRAWING NO.
AL 90040

BODY PRESSURE & TEMPERATURE RATINGS – NON SHOCK		
NOM. RATING	MEDIA	½" to 12"
300# F.F. & D. (EX. HEAVY FLANGE)	STEAM	360 PSI @ 500°F
	W.O.G.	515 PSI @ 100°F



PARTS LIST		
ITEM	DESCRIPTION	MATERIAL
1	BODY	NICKEL ALUMINUM BRONZE (ASTM B 148, C95800)
2	SCREEN	STAINLESS STEEL (304)
3	GASKET	SPIRAL WOUND STAINLESS STEEL (304) –GRAPHITE FILLED
4	COVER	NICKEL ALUMINUM BRONZE (ASTM B 148, C95800)
5	HEX HEAD CAP SCREWS	STAINLESS STEEL (ASTM A 193, GRADE B8)

Optional: Blow-off Plug, Brass

Product Number†	SIZE	DIMENSIONS (in)			WEIGHT (lbs)
		A	B	E	
1/24FFY-NA062P34-GB	1/2	6	3-1/4	3/8	12
3/44FFY-NA062P34-GB	3/4	7-13/16	3-3/4	1/2	18
14FFY-NA062P34-GB	1	7-13/16	3-5/8	1/2	18
11/44FFY-NA062P34-GB	1-1/4	8	4-1/2	1/2	26
11/24FFY-NA062P34-GB	1-1/2	8-1/8	4-3/4	1/2	26
24FFY-NA062P34-GB	2	9	6	1/2	28
21/24FFY-NA062P34-GB	2-1/2	10-5/8	7-3/8	1	48
34FFY-NA062P34-GB	3	12-1/2	9-1/16	1-1/4	75
44FFY-NA062P34-GB	4	15-1/8	10-7/8	1-1/2	110
54FFY-NA125P34-GB	5	18-5/8	13-9/16	2	164
64FFY-NA125P34-GB	6	19-1/8	15-7/8	2	212
84FFY-NA125P34-GB	8	25-3/16	16-1/2	2	359
104FFY-NA125P34-GB	10	29-1/8	19-3/8	2	493
124FFY-NA125P34-GB	12	34	22-5/8	2	938

†See "Style BA7 Product Number Configuration" for additional options.

Dimensions and weights are for reference only. When required, request certified drawings. Face to face values tolerance in compliance with ASME B16.24.

STANDARD SCREENS SUPPLIED

SIZE	SCREEN PERFORATION			
	FOR LIQUID	OPEN AREA	FOR STEAM	OPEN AREA
in	in		in	
2 to 4	1/16	30%	3/64	33%
5 to 10	1/8	43%	3/64	33%
12	1/8	43%	1/16	30%

Standard screens supplied are for liquid service, unless otherwise specified. Options: Other perforations, meshes, and screen materials are available.

 3400 CLEVELAND SKOKIE ILLINOIS	DRAWING NO. AL 90040
	PART NO.
DIMENSIONAL ASSEMBLY	SCALE: NTS
½" to 12" 300# Flg Style BA7	DATE: 09/21/2020
MAT'L: Cast Nickel Aluminum Bronze	DR. BY DSF
REQ. ---	