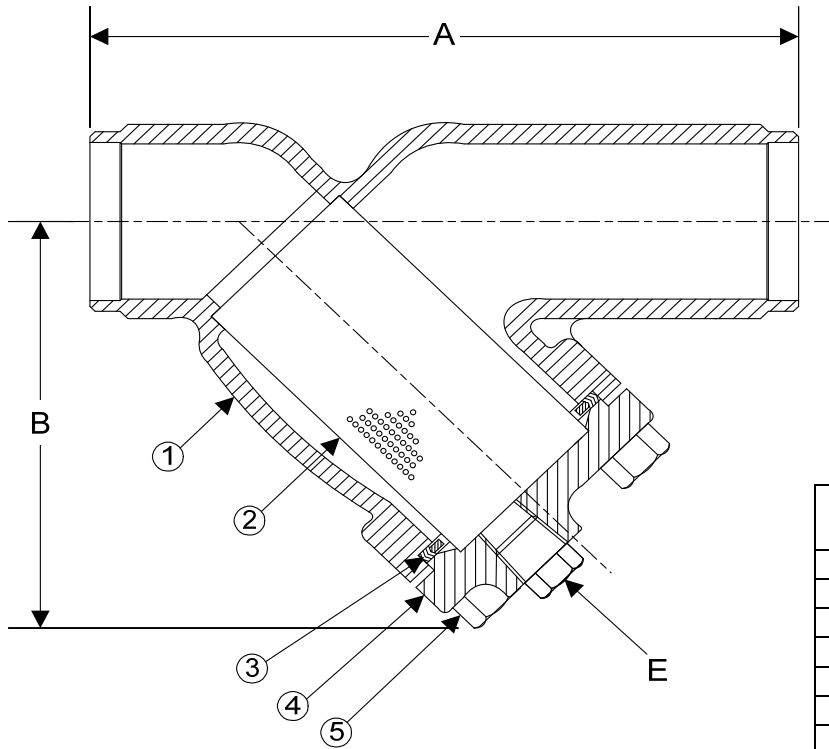


DRAWING NO.
AL 90120



BODY PRESSURE & TEMPERATURE RATINGS – NON SHOCK		
NOM. RATING	MEDIA	1/2" to 14"
300# BUTT WELD	STEAM	300 PSI @ 838°F
	W.O.G.	740 PSI @ 100°F

PARTS LIST		
ITEM	DESCRIPTION	MATERIAL
1	BODY	CARBON STEEL (ASTM A 216, GRADE WCB)
2	SCREEN	STAINLESS STEEL (304)
3	GASKET	SPIRAL WOUND STAINLESS STEEL (304) – WITH GRAPHITE FILLER
4	COVER	CARBON STEEL (ASTM A 216, GRADE WCB)
5	HEX HEAD CAP SCREWS	CARBON STEEL (ASTM A 193, GRADE B7)

Optional: Blow-Off Plug, Carbon Steel (ASTM A 105)

Product Number†	SIZE	DIMENSIONS (in)			COVER		WEIGHT (lbs)
		A	B	E	No. of Bolts	Size of Bolts	
1/24B4Y-CS062P34-GB	1/2	6-1/8	3-3/4	3/8	4	3/8-16 X 1-1/2	6
3/44B4Y-CS062P34-GB	3/4	7-3/4	4-1/4	1/2	4	3/8-16 X 1-1/2	13
14B4Y-CS062P34-GB	1	7-7/8	4-1/4	1/2	4	3/8-16 X 1-1/2	13
11/44B4Y-CS062P34-GB	1-1/4	8-1/8	5-1/8	1/2	4	3/8-16 X 1-1/2	19
11/24B4Y-CS062P34-GB	1-1/2	8-1/4	5-1/8	1/2	4	3/8-16 X 1-1/2	19
24B4Y-CS062P34-GB	2	9-1/2	6	1/2	4	1/2-13 X 1-3/4	33
21/24B4Y-CS062P34-GB	2-1/2	10-3/8	7	1	4	1/2-13 X 1-3/4	44
34B4Y-CS062P34-GB	3	12	7-5/16	1	4	1/2-13 X 1-3/4	58
44B4Y-CS062P34-GB	4	14-1/2	8-15/16	1-1/2	6	1/2-13 X 1-3/4	90
54B4Y-CS125P34-GB	5	19-5/16	13-1/32	2	12	5/8-11 X 2-1/4	180
64B4Y-CS125P34-GB	6	19-5/16	13-1/4	2	12	5/8-11 X 2-1/4	180
84B4Y-CS125P34-GB	8	23-3/8	15-1/2	2	12	5/8-11 X 2-3/4	304
104B4Y-CS125P34-GB	10	27-3/8	18-7/16	2	16	5/8-11 X 3	470
124B4Y-CS062P34-GB	12	32	21-5/8	2	20	5/8-11 X 3-1/4	709

†See "Style SA7 Product Number Configuration" for additional options.
Face to face values tolerance in compliance with ASME B16.10.

STANDARD SCREENS SUPPLIED

SIZE	SCREEN PERFORATION			
	FOR LIQUID	OPEN AREA	FOR STEAM	OPEN AREA
in	in		in	
2 to 4	1/16	30%	3/64	33%
5 to 10	1/8	43%	3/64	33%
12 to 14	1/8	43%	1/16	30%

Standard screens supplied are for liquid service, unless otherwise specified.
Options: Other perforations, meshes, and screen materials are available.



3400 CLEVELAND SKOKIE ILLINOIS

DRAWING NO.
AL 90120

DIMENSIONAL ASSEMBLY

PART NO.

1/2" to 12" 300# Sch 40 Butt Weld Style SA7

SCALE: NTS

DATE: 09/21/2020

MAT'L: Cast Carbon Steel

REQ. ---

DR. BY DSF