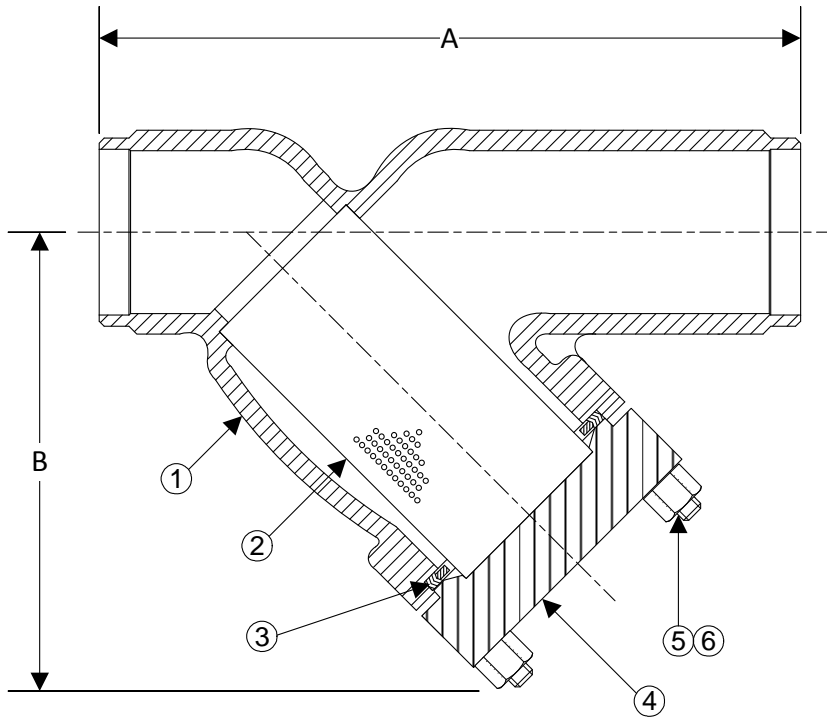


DRAWING NO.  
AL 90520



BODY PRESSURE & TEMPERATURE RATINGS - NON SHOCK		
NOM. RATING	MEDIA	1/2" to 8"
900# SCH 160 (BUTT WELD)	STEAM	1235 PSI @ 800°F
	W.O.G.	2220 PSI @ 100°F

PARTS LIST		
ITEM	DESCRIPTION	MATERIAL
1	BODY	CARBON STEEL (ASTM A 216, GRADE WCB)
2	SCREEN	STAINLESS STEEL (304)
3	GASKET	SPIRAL WOUND STAINLESS STEEL (304) - WITH GRAPHITE FILLER
4	COVER	CARBON STEEL (ASTM A 216, GRADE WCB)
5	STUDS	ALLOY STEEL (ASTM A 193, GRADE B)
6	HEAVY HEX NUTS	ALLOY STEEL (ASTM A 194, )


Product Number†	SIZE	DIMENSIONS (in)		WEIGHT (lbs)
		A	B	
1/26B9Y-CS033P34-GB	1/2	7-3/8	4-1/4	20
3/46B9Y-CS033P34-GB	3/4	8-3/16	4-3/4	30
16B9Y-CS033P34-GB	1	9-1/16	5-3/4	52
11/46B9Y-CS033P34-GB	1-1/4	12	6-3/4	65
11/26B9Y-CS033P34-GB	1-1/2	12	6-3/4	65
26B9Y-CS033P34-GB	2	13-15/16	7-1/2	93
21/26B9Y-CS033P34-GB	2-1/2	17-1/2	10-3/4	185
36B9Y-CS033P34-GB	3	17-1/2	10-3/4	185
46B9Y-CS033P34-GB	4	23-3/8	15	250
66B9Y-CS045P34-GB	6	31	18-7/8	560
86B9Y-CS045P34-GB	8	Consult Factory	Consult Factory	Consult Factory

†See "Style SA Product Number Configuration" for additional options.

STANDARD SCREENS SUPPLIED

SIZE in	SCREEN GAGE	SCREEN PERFORATION			
		FOR STEAM in	OPEN AREA	FOR LIQUID in	OPEN AREA
1/2 to 4	28	1/32	29%	1/16	30%
5 to 8	24	3/64	33%	1/8	43%

Standard screens supplied are for steam service, unless otherwise specified.  
Options: Other perforations, meshes, and screen materials are available.

 3400 CLEVELAND SKOKIE ILLINOIS	DRAWING NO. AL 90520
	PART NO. 6B9Y-CS
DIMENSIONAL ASSEMBLY	SCALE: NTS
1/2" to 8" 900# Butt Weld Style SA	DATE: 09/22/2014
MAT'L: (As Noted Above)	DR. BY DSF
REQ. ---	