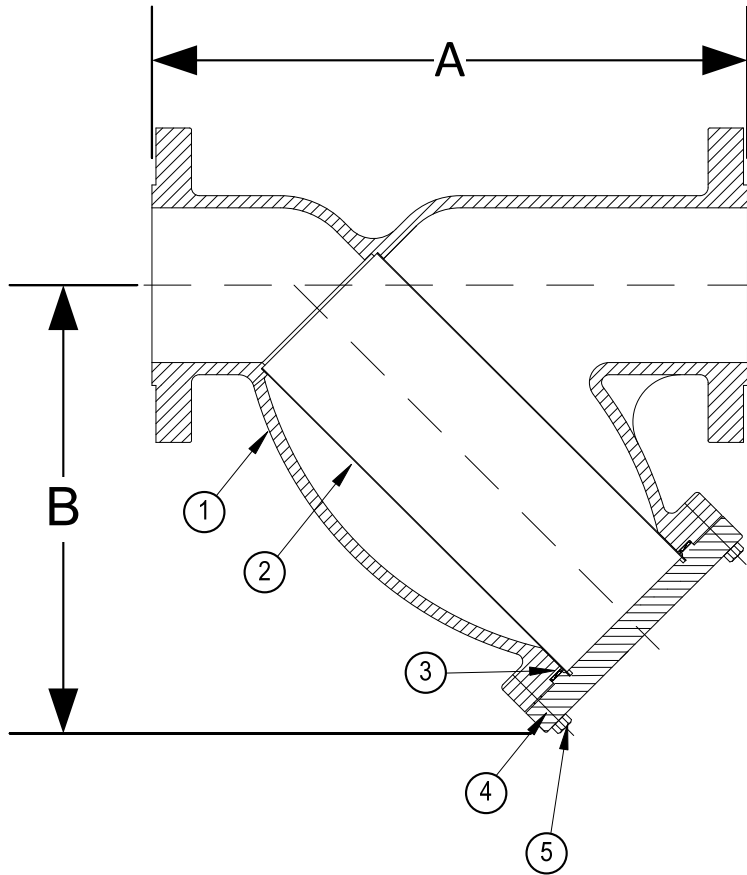


DRAWING NO.
AL 90940



BODY PRESSURE & TEMPERATURE RATINGS - NON SHOCK		
NOM. RATING	MEDIA	1/2" to 8"
2500# R.F. & D. (EX. HEAVY FLANGE)	STEAM	1970 PSI @ 1150°F
	W.O.G.	6000 PSI @ 100°F

PARTS LIST		
ITEM	DESCRIPTION	MATERIAL
1	BODY	STAINLESS STEEL (ASTM A 351, GRADE CF8M)
2	SCREEN	STAINLESS STEEL (304)
3	GASKET	SPIRAL WOUND STAINLESS STEEL (304) - WITH GRAPHITE FILLER
4	COVER	STAINLESS STEEL (ASTM A 351, GRADE CF8M)
5	STUDS	ALLOY STEEL (ASTM A 193, GRADE B)
6	HEAVY HEX NUTS	ALLOY STEEL (ASTM A 194,)

Product Number†	SIZE	DIMENSIONS (in)		WEIGHT (lbs)
		A	B	
1/28RFY-36033P34-GB	1/2	12-5/8	7-11/16	30
3/48RFY-36033P34-GB	3/4	12-5/8	7-11/16	40
18RFY-36033P34-GB	1	12-5/8	7-11/16	65
11/48RFY-36033P34-GB	1-1/4	16-7/8	10-1/2	140
11/28RFY-36033P34-GB	1-1/2	16-7/8	10-1/2	140
28RFY-36033P34-GB	2	18-15/16	12-1/2	240
21/28RFY-36033P34-GB	2-1/2	25-3/4	18-13/16	500
38RFY-36033P34-GB	3	26-3/4	18-13/16	560
48RFY-36033P34-GB	4	33-5/8	20-1/4	850
68RFY-36045P34-GB	6	33-3/4	20	1900
88RFY-36045P34-GB	8	Consult Factory	Consult Factory	Consult Factory

†See "Style SSA Product Number Configuration" for additional options.

STANDARD SCREENS SUPPLIED

SIZE in	SCREEN GAGE	SCREEN PERFORATION			
		FOR STEAM in	OPEN AREA	FOR LIQUID in	OPEN AREA
1/2 to 4	28	1/32	29%	1/16	30%
5 to 8	24	3/64	33%	1/8	43%

Standard screens supplied are for steam service, unless otherwise specified.
Options: Other perforations, meshes, and screen materials are available.

		DRAWING NO.
3400 CLEVELAND SKOKIE ILLINOIS		AL 90940
DIMENSIONAL ASSEMBLY		PART NO. 8RFY-36
1/2" to 8" 2500# Flg Style SSA		SCALE: NTS
		DATE: 09/22/2014
MAT'L: (As Noted Above)	REQ. ---	DR. BY DSF