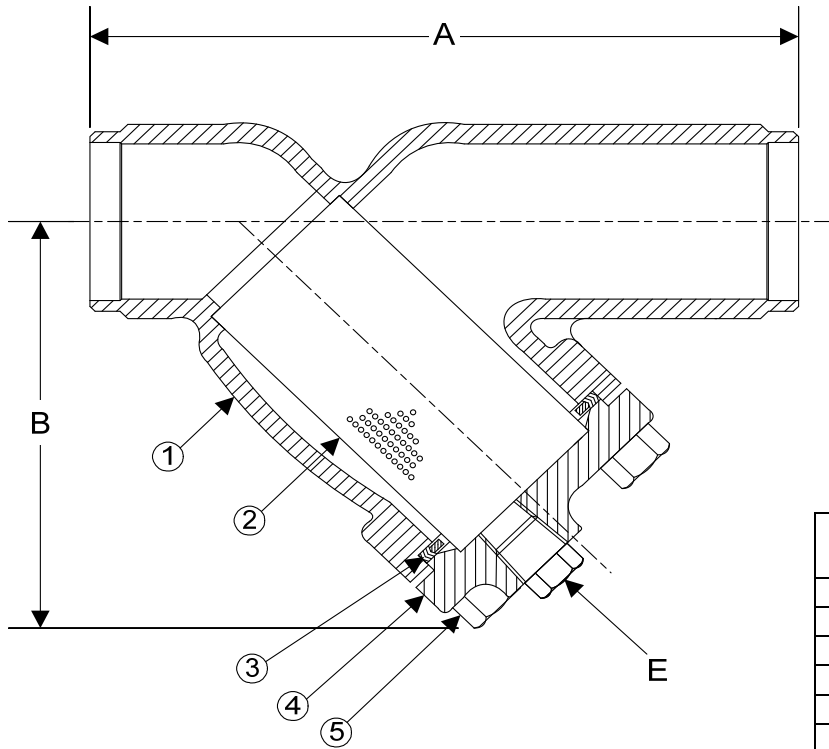


DRAWING NO.
AL 90320



| BODY PRESSURE & TEMPERATURE RATINGS – NON SHOCK | | |
|---|--------|------------------|
| NOM. RATING | MEDIA | 1/2" to 12" |
| 300# BUTT WELD | STEAM | 300 PSI @ 1125°F |
| | W.O.G. | 720 PSI @ 100°F |

| PARTS LIST | | |
|------------|---------------------|---|
| ITEM | DESCRIPTION | MATERIAL |
| 1 | BODY | STAINLESS STEEL (ASTM A 351, GRADE CF8M) |
| 2 | SCREEN | STAINLESS STEEL (304) |
| 3 | GASKET | SPIRAL WOUND STAINLESS STEEL (304) – WITH GRAPHITE FILLER |
| 4 | COVER | STAINLESS STEEL (ASTM A 351, GRADE CF8M) |
| 5 | HEX HEAD CAP SCREWS | STAINLESS STEEL (ASTM A 193, GRADE B8) |

Optional: Blow-Off Plug, Stainless Steel (304)

| Product Number† | SIZE | DIMENSIONS (in) | | | COVER | | WEIGHT (lbs) |
|----------------------|-------|-----------------|---------|-------|--------------|----------------|--------------|
| | | A | B | E | No. of Bolts | Size of Bolts | |
| 1/24B4Y-36062P34-GB | 1/2 | 6-1/8 | 3-3/4 | 3/8 | 4 | 3/8-16 X 1-1/2 | 6 |
| 3/44B4Y-36062P34-GB | 3/4 | 7-3/4 | 4-1/4 | 1/2 | 4 | 3/8-16 X 1-1/2 | 13 |
| 14B4Y-36062P34-GB | 1 | 7-7/8 | 4-1/4 | 1/2 | 4 | 3/8-16 X 1-1/2 | 13 |
| 11/44B4Y-36062P34-GB | 1-1/4 | 8-1/8 | 5-1/8 | 1/2 | 4 | 3/8-16 X 1-1/2 | 19 |
| 11/24B4Y-36062P34-GB | 1-1/2 | 8-1/4 | 5-1/8 | 1/2 | 4 | 3/8-16 X 1-1/2 | 19 |
| 24B4Y-36062P34-GB | 2 | 9-1/2 | 6 | 1/2 | 4 | 1/2-13 X 1-3/4 | 33 |
| 21/24B4Y-36062P34-GB | 2-1/2 | 10-3/8 | 7 | 1 | 4 | 1/2-13 X 1-3/4 | 44 |
| 34B4Y-36062P34-GB | 3 | 12 | 7-5/16 | 1 | 4 | 1/2-13 X 1-3/4 | 58 |
| 44B4Y-36062P34-GB | 4 | 14-1/2 | 8-15/16 | 1-1/2 | 6 | 1/2-13 X 1-3/4 | 90 |
| 54B4Y-36125P34-GB | 5 | 19-5/16 | 13-1/32 | 2 | 12 | 5/8-11 X 2-1/4 | 180 |
| 64B4Y-36125P34-GB | 6 | 19-5/16 | 13-1/4 | 2 | 12 | 5/8-11 X 2-1/4 | 180 |
| 84B4Y-36125P34-GB | 8 | 23-3/8 | 15-1/2 | 2 | 12 | 5/8-11 X 2-3/4 | 304 |
| 104B4Y-36125P34-GB | 10 | 27-3/8 | 18-7/16 | 2 | 16 | 5/8-11 X 3 | 470 |
| 124B4Y-36125P34-GB | 12 | 32 | 21-5/8 | 2 | 20 | 3/4-10 X 3-1/4 | 709 |

†See "Style SSA7 Product Number Configuration" for additional options.

Face to face values tolerance in compliance with ASME B16.10.

STANDARD SCREENS SUPPLIED

| SIZE | SCREEN PERFORATION | | | |
|---------|--------------------|-----------|-----------|-----------|
| | FOR LIQUID | OPEN AREA | FOR STEAM | OPEN AREA |
| in | in | | in | |
| 2 to 4 | 1/16 | 30% | 3/64 | 33% |
| 5 to 10 | 1/8 | 43% | 3/64 | 33% |
| 12 | 1/8 | 43% | 1/16 | 30% |

Standard screens supplied are for **liquid service**, unless otherwise specified.

Options: Other perforations, meshes, and screen materials are available.

KECKLEY

3400 CLEVELAND SKOKIE ILLINOIS

DRAWING NO.
AL90320

DIMENSIONAL ASSEMBLY

PART NO.

1/2" to 12" 300# Sch 40 Butt Weld Style SSA7

SCALE: NTS

DATE: 09/21/2020

MAT'L: Cast Stainless Steel (316)

REQ. ---

DR. BY DSF