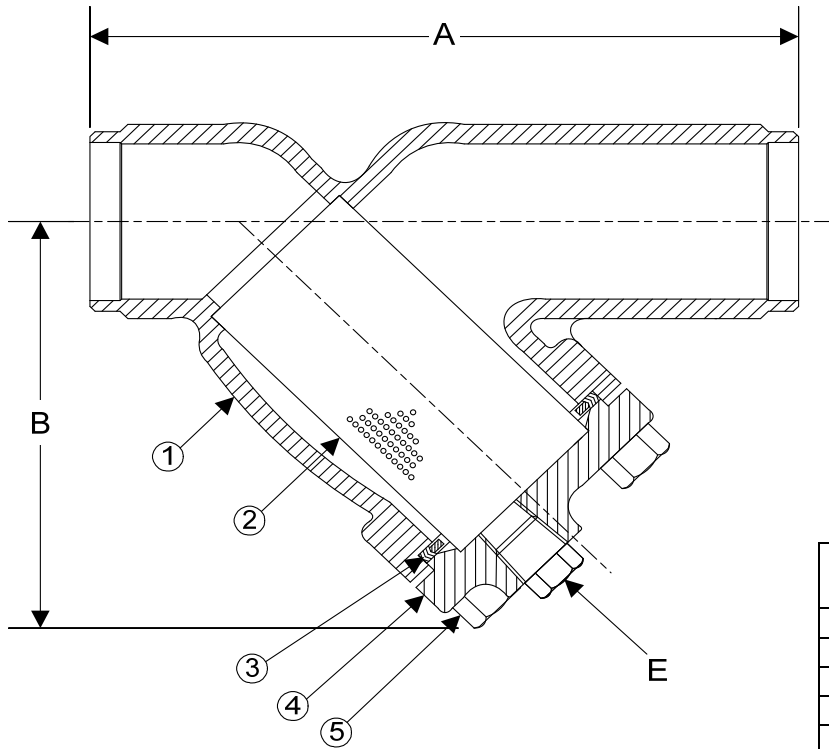


DRAWING NO.
AL 90340HC



BODY PRESSURE & TEMPERATURE RATINGS - NON SHOCK		
NOM. RATING	MEDIA	1/2" to 14"
300# BUTT WELD	STEAM	300 PSI @ 1125°F
	W.O.G.	720 PSI @ 100°F

PARTS LIST		
ITEM	DESCRIPTION	MATERIAL
1	BODY	CAST HASTELLOY C276 (ASTM A 494, GRADE CW12MW)
2	SCREEN	STAINLESS STEEL (304)
3	GASKET	SPIRAL WOUND STAINLESS STEEL (304) - WITH GRAPHITE FILLER
4	COVER	CAST HASTELLOY C276 (ASTM A 494, GRADE CW12MW)
5	HEX HEAD CAP SCREWS	STAINLESS STEEL (ASTM A 193, GRADE B8)

Optional: Blow-Off Plug, Stainless Steel (304)


Product Number†	SIZE	DIMENSIONS (in)			COVER		WEIGHT (lbs)
		A	B	E	No. of Bolts	Size of Bolts	
1/24B4Y-HC045P34-GBI	1/2	6-1/8	3-3/4	3/8	4	3/8-16 x 1-1/2	6
3/44B4Y-HC045P34-GBI	3/4	7-3/4	4-1/4	1/2	4	3/8-16 x 1-1/2	13
14B4Y-HC045P34-GBI	1	7-7/8	4-1/4	1/2	4	3/8-16 x 1-1/2	13
11/44B4Y-HC045P34-GBI	1-1/4	8-1/8	5-1/8	1/2	4	3/8-16 x 1-1/2	19
11/24B4Y-HC045P34-GBI	1-1/2	8-1/4	5-1/8	1/2	4	3/8-16 x 1-1/2	19
24B4Y-HC045P34-GBI	2	9-1/2	6	1/2	4	1/2-13 x 1-3/4	33
21/24B4Y-HC045P34-GBI	2-1/2	10-3/8	7	1	4	1/2-13 x 1-3/4	44
34B4Y-HC045P34-GBI	3	12	7-5/16	1	4	1/2-13 x 1-3/4	58
44B4Y-HC045P34-GBI	4	14-1/2	8-15/16	1-1/2	6	1/2-13 x 1-3/4	90
54B4Y-HC045P34-GBI	5	19-5/16	13-1/32	2	12	5/8-11 x 2-1/4	180
64B4Y-HC045P34-GBI	6	19-5/16	13-1/4	2	12	5/8-11 x 2-1/4	180
84B4Y-HC045P34-GBI	8	23-3/8	15-1/2	2	12	5/8-11 x 2-3/4	304
104B4Y-HC045P34-GBI	10	27-3/8	18-7/16	2	16	5/8-11 x 3	470
124B4Y-HC062P34-GBI	12	32	21-5/8	2	20	5/8-11 x 3-1/4	709

†See "Style SSA-7 Product Number Configuration" for additional options.

STANDARD SCREENS SUPPLIED

SIZE in	SCREEN GAGE	SCREEN PERFORATION			
		FOR STEAM in	OPEN AREA	FOR LIQUID in	OPEN AREA
1/2 to 4	28	3/64	33%	1/16	30%
5 to 10	24	3/64	33%	1/8	43%
12 to 14	24	1/16	30%	1/8	43%

Standard screens supplied are for steam service, unless otherwise specified.
Options: Other perforations, meshes, and screen materials are available.

 3400 CLEVELAND SKOKIE ILLINOIS	DRAWING NO. AL 90340HC
	PART NO.
DIMENSIONAL ASSEMBLY	SCALE: NTS
1/2" to 12" 300# Schd 40 Butt Weld	DATE: 07/01/2011
Style SSA-7HC	DR. BY DSF
MAT'L: Cast Hastelloy C276	REQ. ---