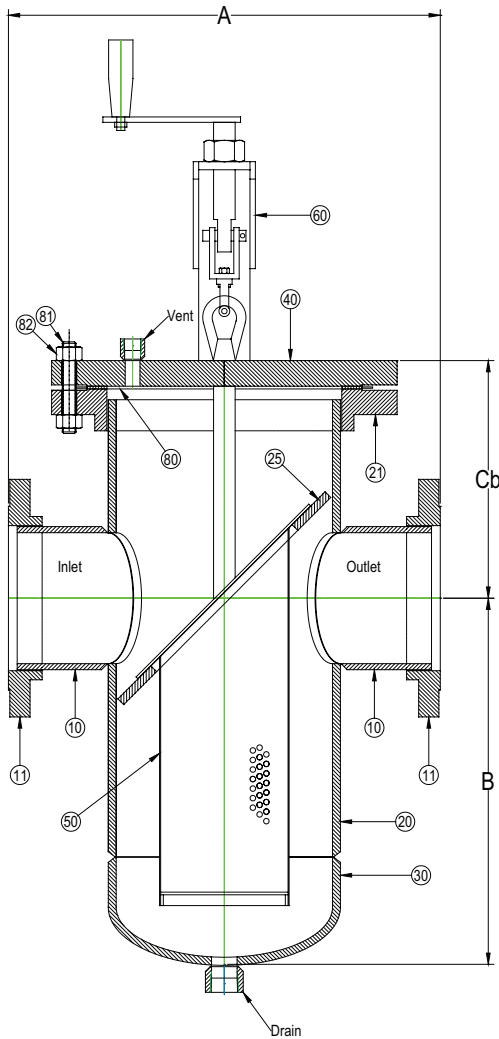


DRAWING NO.
AL 93200

BODY PRESSURE & TEMPERATURE RATINGS - NON SHOCK

NOM. RATING	4" TO 30"
Class 150	285 PSI @ 100°F



Product Number†	SIZE	DIMENSIONS (in)					SHELL	WEIGHT (lbs)	
		A	B	Cb	Vent	Drain		Cover	Total
42RFFB-FCS125P34-FD	4	16	14	10-1/2	1/2	1	8	47	241
52RFFB-FCS125P34-FD	5	16	15	11	1/2	1	8	47	277
62RFFB-FCS125P34-FD	6	20	17	11	1/2	1	10	70	336
82RFFB-FCS125P34-FD	8	22	21	12	1/2	1-1/2	12	123	479
102RFFB-FCS125P34-FD	10	32	25	13	1/2	1-1/2	16	180	740
122RFFB-FCS125P34-FD	12	35	28	15	1/2	1-1/2	18	220	862
142RFFB-FCS125P34-FD	14	37	33	16-1/2	1/2	2	20	285	1096
162RFFB-FCS125P34-FD	16	42	36	17-1/2	1/2	2	24	430	1573
182RFFB-FCS125P34-FD	18	42	39	18-1/2	1/2	2	24	430	1607
202RFFB-FCS125P34-FD	20	43	44	20	1/2	2	30	543	2201
242RFFB-FCS125P34-FD	24	48	44	21	1/2	2	30	543	2233
302RFFB-FCS125P34-FB	30	60	54	31	1/2	2	36	890	3410

†See "Style FB Product Number Configuration" for additional options.

Dimension and weights are for reference only. When required, request certified drawings.

PARTS LIST

ITEM	DESCRIPTION	MATERIAL
10	NOZZLE	CARBON STEEL (ASTM A 53, GRADE B)
11	CLASS 150 RFSO FLG	CARBON STEEL (ASTM A 105) B16.5
20	SHELL	CARBON STEEL (ASTM A 53, GRADE B)
21	CLASS 150 RFSO FLG	CARBON STEEL (ASTM A 105) B16.5
25	SEAT	CARBON STEEL (ASTM A 36)
30	WELD CAP	CARBON STEEL (ASTM A 234, GRADE WPB)
40	CLASS 150 RF BLIND FLG	CARBON STEEL (ASTM A 105) B16.5
50	BASKET	STAINLESS STEEL (304) - 1/8" PERFORATION
60	LIFTING DAVIT ASSEMBLY	CARBON STEEL (ASTM A 53, GRADE B) AND (ASTM A 36)
80	GASKET	FIBER
81	STUDS	ALLOY STEEL (ASTM A 193, GRADE B7)
82	NUTS	ALLOY STEEL (ASTM A 194, GRADE 2H)

*30" & LARGER FLANGES ARE RFWN (SERIES B).

NO DAVIT AVAILABLE ON 30". BOLTED COVER ONLY.



3400 CLEVELAND

SKOKIE ILLINOIS

DRAWING NO.

AL 93200

DIMENSIONAL ASSEMBLY

PART NO.

4" to 30" Class 150 RF Flg Style FB-D

SCALE: NTS

DATE: 07/18/2023

MAT'L: (As Noted Above)

REQ. ---

DR. BY DSF