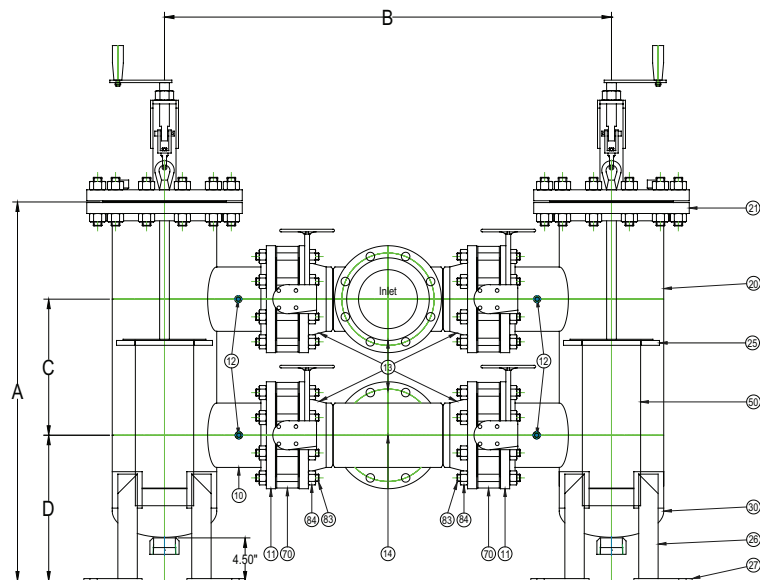
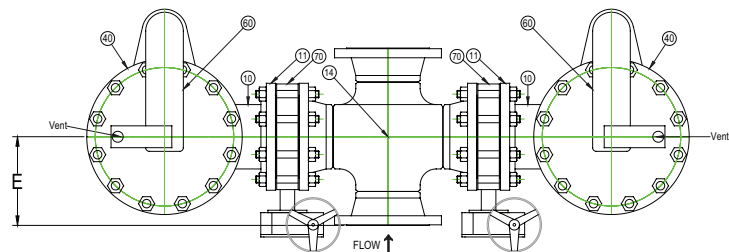


**DRAWING NO.**  
AL 94500

**BODY PRESSURE & TEMPERATURE RATINGS - NON SHOCK**

<b>NOM. RATING</b>	<b>2" TO 24"</b>
Class 150	285 PSI @ 100°F



Product Number†	SIZE	DIMENSIONS (in)							SHELL	WEIGHT (lbs)
		A	B	C	D	E	Vent	Drain		
22RFFD-FCS125P34-FD	2	25	26	9	10	5	1/2	1/2	4	214
21/22RFFD-FCS125P34-FD	2-1/2	28	29	10	11-1/2	5-3/4	1/2	1/2	5	270
32RFFD-FCS125P34-FD	3	32	30	10	13	6-1/8	1/2	3/4	6	376
42RFFD-FCS125P34-FD	4	34	38	12	14	7-1/8	1/2	3/4	8	673
52RFFD-FCS125P34-FD	5	36	42	13	14	8-3/8	1/2	1	8	801
62RFFD-FCS125P34-FD	6	39	46	14	15	9-1/8	1/2	2	10	973
82RFFD-FCS125P34-FD	8	44	54	16	17	11	1/2	2	12	1393
102RFFD-FCS125P34-FD	10	51	60	19	20	12-1/2	1/2	2	16	2123
122RFFD-FCS125P34-FD	12	60	67	23	24	14-1/2	1/2	2	18	2829
142RFFD-FCS125P34-FD	14	62	74	24	24	16	1/2	2	20	3579
162RFFD-FCS125P34-FD	16	69	80	27	27	17	1/2	2	24	5003
182RFFD-FCS125P34-FD	18	72	85	28	27	19	1/2	2	24	5441
202RFFD-FCS125P34-FD	20	76	95	31	28	20-3/4	1/2	2	30	7556
242RFFD-FCS125P34-FD	24	93	104	35	30	23	1/2	2	30	9762

†See "Style FD Product Number Configuration" for additional options.  
Dimension and weights are for reference only. When required, request certified drawings.

PARTS LIST		
ITEM	DESCRIPTION	MATERIAL
10	NOZZLE	CARBON STEEL (ASTM A 53, GRADE B)
11	CLASS 150 RFSO FLG	CARBON STEEL (ASTM A 105) B16.5
12	DP TAP	CARBON STEEL (ASTM A 105)
13	CLASS 150 RFWN FLG	CARBON STEEL (ASTM A 105) B16.5
14	TEE	CARBON STEEL (ASTM A 234, GRADE WPB)
20	SHELL	CARBON STEEL (ASTM A 53, GRADE B)
21	CLASS 150 RFSO FLG	CARBON STEEL (ASTM A 105) B16.5
25	SEAT	CARBON STEEL (ASTM A 36)
26	LEGS (ANGLES)	CARBON STEEL (ASTM A 36)
27	FEET	CARBON STEEL (ASTM A 36)
30	WELD CAP	CARBON STEEL (ASTM A 234, GRADE WPB)
40	CLASS 150 RF BLIND FLG	CARBON STEEL (ASTM A 105) B16.5
50	BASKET	STAINLESS STEEL (304) - 1/8" PERFORATION
60	LIFTING DAVIT ASSEMBLY	CARBON STEEL (ASTM A 53, GRADE B) AND (ASTM A 36)
70	CLASS 125 LUG STYLE BUTTERFLY VALVES	DUCTILE IRON BODY / DUCTILE IRON/ENP PLATED DISCS / 416SS STEM / BUNA-N SEATS / INDIVIDUAL GEAR OPERATORS
80	GASKET	FIBER
81,83	STUDS	ALLOY STEEL (ASTM A 193, GRADE B7)
82,84	NUTS	ALLOY STEEL (ASTM A 194, GRADE 2H)

\*30" & Larger Flanges are RFWN (Series B).

Buna-N O-Ring good for temperatures up to 250°F. For higher temperatures, consult Factory.



3400 CLEVELAND SKOKIE ILLINOIS

**DRAWING NO.**

AL 94500

**DIMENSIONAL ASSEMBLY**

**PART NO.**

2" to 24" Class 150 RF Flg Style FSDPXF-D

**SCALE:** NTS

**DATE:** 03/27/2023

**MAT'L:** (As Noted Above)

**REQ. ---**

**DR. BY** DSF