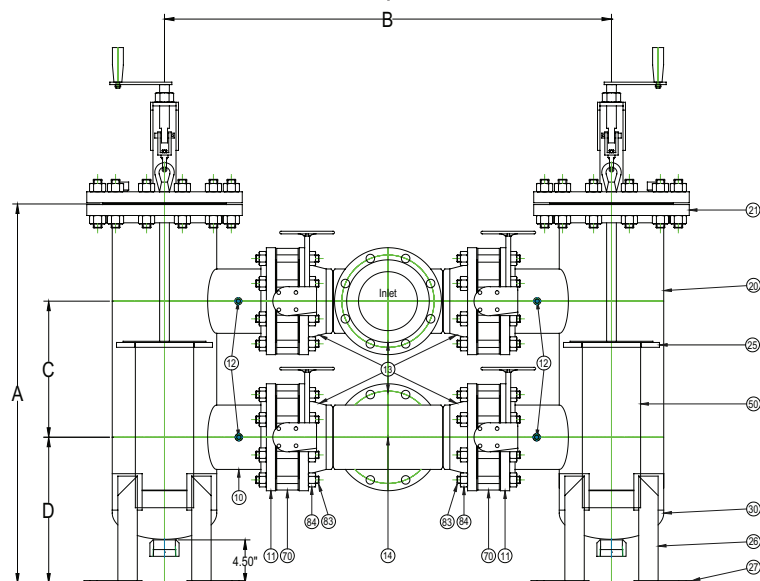
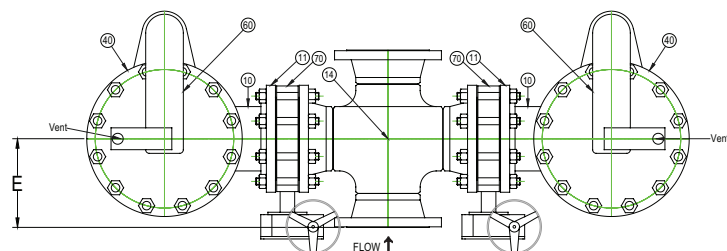


DRAWING NO.
AL 94520

BODY PRESSURE & TEMPERATURE RATINGS - NON SHOCK

NOM. RATING	2" TO 24"
Class 300	740 PSI @ 100°F



Product Number†	SIZE	DIMENSIONS (in)							SHELL	WEIGHT (lbs) Total
		A	B	C	D	E	Vent	Drain		
24RFFD-FCS125P34-FD	2	29	26	10	10	5-1/4	1/2	1/2	4	314
21/24RFFD-FCS125P34-FD	2-1/2	32	30	11	11-1/2	6	1/2	1/2	5	422
34RFFD-FCS125P34-FD	3	38	31	12	13	6-1/2	1/2	3/4	6	602
44RFFD-FCS125P34-FD	4	39	35	13	14	7-1/2	1/2	3/4	8	1004
54RFFD-FCS125P34-FD	5	41	37	14	14	8-3/4	1/2	1	8	1158
64RFFD-FCS125P34-FD	6	45	43	16	15	9-1/2	1/2	2	10	1581
84RFFD-FCS125P34-FD	8	50	49	18	17	11-3/8	1/2	2	12	2330
104RFFD-FCS125P34-FD	10	57	63	21	20	13-1/8	1/2	2	16	3665
124RFFD-FCS125P34-FD	12	67	71	25	24	15-1/8	1/2	2	18	5048
144RFFD-FCS125P34-FD	14	69	77	26	24	16-5/8	1/2	2	20	6650
164RFFD-FCS125P34-FB	16	76	84	29	27	17-3/4	1/2	2	24	9239
184RFFD-FCS125P34-FB	18	80	89	31	27	19-3/4	1/2	2	24	10848
204RFFD-FCS125P34-FB	20	85	94	34	28	21-3/8	1/2	2	30	14688
244RFFD-FCS125P34-FB	24	102	104	39	30	23-5/8	1/2	2	30	18626

†See "Style FD Product Number Configuration" for additional options.
Dimension and weights are for reference only. When required, request certified drawings.

PARTS LIST		
ITEM	DESCRIPTION	MATERIAL
10	NOZZLE	CARBON STEEL (ASTM A 53, GRADE B)
11	CLASS 300 RF SO FLG	CARBON STEEL (ASTM A 105) B16.5
12	DP TAP	CARBON STEEL (ASTM A 105)
13	CLASS 300 RFWN FLG	CARBON STEEL (ASTM A 105) B16.5
14	TEE	CARBON STEEL (ASTM A 234, GRADE WPB)
20	SHELL	CARBON STEEL (ASTM A 53, GRADE B)
21	CLASS 300 RF SO FLG	CARBON STEEL (ASTM A 105) B16.5
25	SEAT	CARBON STEEL (ASTM A 36)
26	LEGS (ANGLES)	CARBON STEEL (ASTM A 36)
27	FEET	CARBON STEEL (ASTM A 36)
30	WELD CAP	CARBON STEEL (ASTM A 234, GRADE WPB)
40	CLASS 300 RF BLIND FLG	CARBON STEEL (ASTM A 105) B16.5
50	BASKET	STAINLESS STEEL (304) - 1/8" PERFORATION
60	LIFTING DAVIT ASSEMBLY	CARBON STEEL (ASTM A 53, GRADE B) AND (ASTM A 36)
70	CLASS 300 LUG STYLE BUTTERFLY VALVES	CARBON STEEL BODY / CF8M DISCS / 17-4 STEM / RTFE SEATS / INDIVIDUAL GEAR OPERATORS
80	GASKET	FIBER
81,83	STUDS	ALLOY STEEL (ASTM A 193, GRADE B7)
82,84	NUTS	ALLOY STEEL (ASTM A 194, GRADE 2H)

*30" & Larger Flanges are RFWN (Series B).
No davit available on 16" & Up. Bolted Cover Only.

 3400 CLEVELAND SKOKIE ILLINOIS	DRAWING NO. AL 94520
	PART NO.
DIMENSIONAL ASSEMBLY	
2" to 24" Class 300 RF Flg Style FSDPXF-D	SCALE: NTS
	DATE: 03/27/2023
MAT'L: (As Noted Above)	DR. BY DSF