

DRAWING NO.  
AL 104240

| BODY PRESSURE & TEMPERATURE RATINGS – NON SHOCK |        |                 |
|---|--------|-----------------|
| NOM. RATING                                     | MEDIA  | 8" to 48"       |
| 300# (WAFER DOUBLE FLANGE)                      | W.O.G. | 720 PSI @ 100°F |

| PARTS LIST |                |   |
|------------|----------------|---|
| ITEM       | DESCRIPTION    | MATERIAL                                  |
| 1          | BODY           | STAINLESS STEEL (ASTM A 351, GRADE CF8M)  |
| 2          | SEAT*          | VITON O-RING                              |
| 3          | DISC           | STAINLESS STEEL (ASTM A 351, GRADE CF8M)  |
| 4          | SPRING         | INCONEL X-750                             |
| 5          | SPRING PLATE   | STAINLESS STEEL (ASTM A 182, GRADE F-316) |
| 6          | THRUST WASHER  | STAINLESS STEEL (ASTM A 182, GRADE F-316) |
| 7          | HINGE PIN      | STAINLESS STEEL (ASTM A 182, GRADE F-316) |
| 8          | STOP PIN       | STAINLESS STEEL (ASTM A 182, GRADE F-316) |
| 9          | LOCATING PIECE | STAINLESS STEEL (ASTM A 182, GRADE F-316) |
| 10         | LIFTING LUG    | CARBON STEEL                              |
| 11         | SCREW          | STAINLESS STEEL (316)                     |

\*Other Seat Materials Available in Buna-N, EPDM, PTFE, and Neoprene.

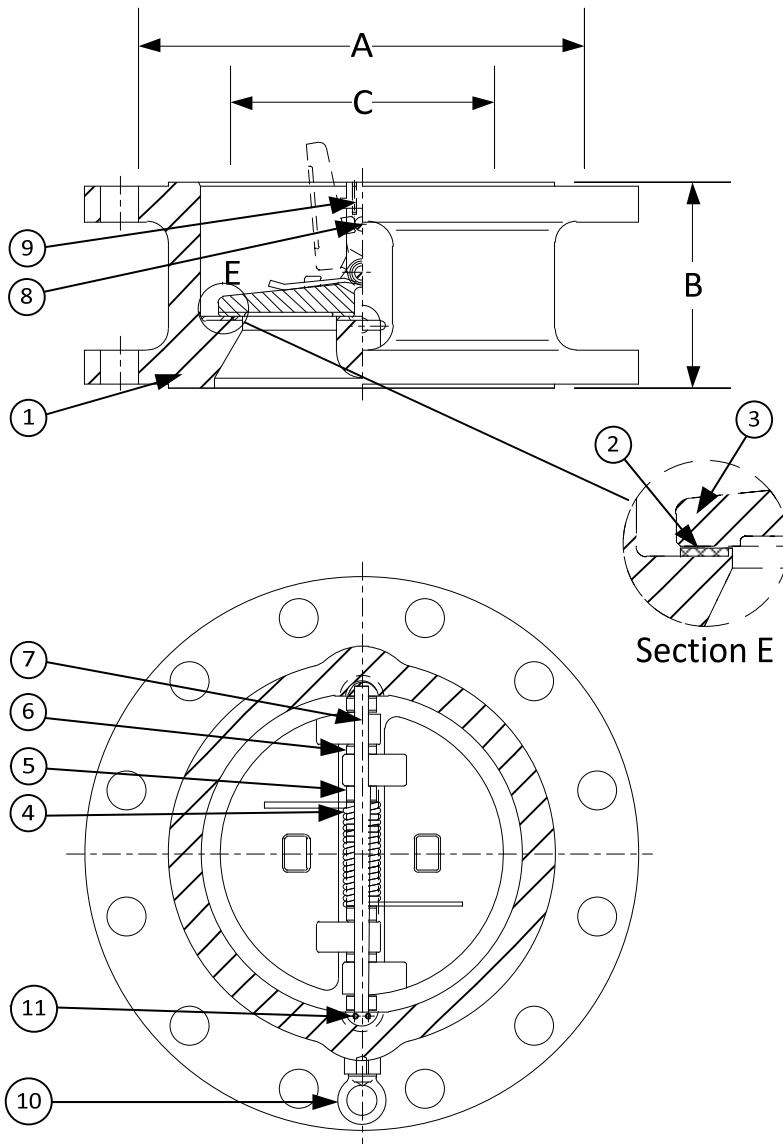
| PRODUCT NUMBER† | SIZE | DIMENSIONS |        |        | WEIGHT |
|-----------------|------|------------|--------|--------|--------|
|                 |      | A          | B      | C*     |        |
| 8DF4R-36-364IX  | 8    | 12-1/8     | 5      | 7-1/2  | 151    |
| 10DF4R-36-364IX | 10   | 14-1/4     | 5-3/4  | 9-4/16 | 251    |
| 12DF4R-36-364IX | 12   | 20-1/2     | 7-1/8  | 11-3/8 | 465    |
| 14DF4R-36-364IX | 14   | 23         | 8-3/4  | 12-1/2 | 593    |
| 16DF4R-36-364IX | 16   | 25-1/2     | 9-1/8  | 14-3/8 | 771    |
| 18DF4R-36-364IX | 18   | 28         | 10-3/8 | 16-1/8 | 970    |
| 20DF4R-36-364IX | 20   | 30-1/2     | 11-1/2 | 17-7/8 | 1078   |
| 24DF4R-36-364IX | 24   | 36         | 12-1/2 | 22-1/8 | 1516   |
| 30DF4R-36-364IX | 30   | 43         | 14-1/2 | 28-3/4 | 3100   |
| 36DF4R-36-364IX | 36   | 50         | 19     | 35     | 4650   |
| 42DF4R-36-364IX | 42   | 50-3/4     | 22-3/8 | 41     | 8670   |
| 48DF4R-36-364IX | 48   | 57-3/4     | 24-3/4 | 47     | 9950   |

\*Minimum companion flange bore.

Sizes 30" and larger fit **Series A** flanges.


Available with thru-hole bolting or threaded bolt holes

†See "Style DF Product Number Configuration" for additional options.



**APPLICABLE STANDARDS**

|                             |               |
|-----------------------------|---------------|
| • Design ASME B16.5, B16.34 | • MSS SP – 6  |
| • Conform to API 594 & 6D   | • MSS SP – 25 |
| • Testing API 598           | • MSS SP – 55 |

|   |          |                           |
|---|----------|---------------------------|
| <br>3400 CLEVELAND SKOKIE ILLINOIS |          | DRAWING NO.<br>AL 104240  |
|   |          | PART NO.<br>DF4R-36-364IX |
| DIMENSIONAL ASSEMBLY  |          | SCALE: NTS                |
| 300# Retainerless Wafer Double Flange Body  |          | DATE: 07/01/2011          |
| Double Disc Check Valve   |          | DR. BY DSF                |
| MAT'L: Cast Stainless Steel (316)   | REQ. --- |                           |