

DRAWING NO.  
AL 105420

| BODY PRESSURE & TEMPERATURE RATINGS – NON SHOCK |        |                  |
|-------------------------------------------------|--------|------------------|
| NOM. RATING                                     | MEDIA  | 12" to 42"       |
| 600# (WAFER DOUBLE FLANGE)                      | W.O.G. | 1440 PSI @ 100°F |

| PARTS LIST |                |                                           |
|------------|----------------|-------------------------------------------|
| ITEM       | DESCRIPTION    | MATERIAL                                  |
| 1          | BODY           | STAINLESS STEEL (ASTM A 351, GRADE CF8M)  |
| 2          | SEAT*          | STAINLESS STEEL (ASTM A 351, GRADE CF8M)  |
| 3          | DISC           | STAINLESS STEEL (ASTM A 351, GRADE CF8M)  |
| 4          | SPRING         | INCONEL X-750                             |
| 5          | SPRING PLATE   | STAINLESS STEEL (ASTM A 182, GRADE F-316) |
| 6          | THRUST WASHER  | STAINLESS STEEL (ASTM A 182, GRADE F-316) |
| 7          | HINGE PIN      | STAINLESS STEEL (ASTM A 182, GRADE F-316) |
| 8          | STOP PIN       | STAINLESS STEEL (ASTM A 182, GRADE F-316) |
| 9          | LOCATING PIECE | STAINLESS STEEL (ASTM A 182, GRADE F-316) |
| 10         | LIFTING LUG    | CARBON STEEL                              |
| 11         | SCREW          | STAINLESS STEEL (316)                     |

\*Other Seat Materials Available in Metal (Same as Disc), 316LSS Overlay, and 410SS Overlay.

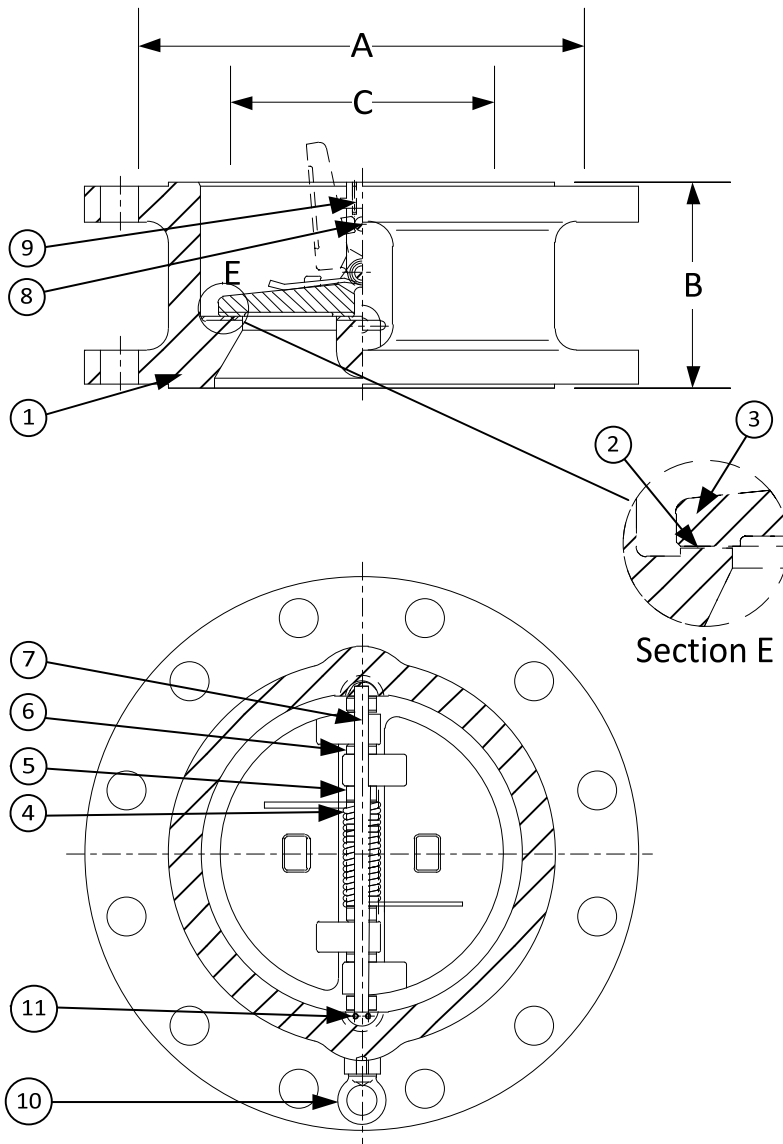
| PRODUCT NUMBER† | SIZE | DIMENSIONS |          |         | WEIGHT |
|-----------------|------|------------|----------|---------|--------|
|                 |      | A          | B        | C*      |        |
| 12DF5R-36-362IX | 12   | 18         | 9        | 11-3/8  | 612    |
| 14DF5R-36-362IX | 14   | 19-3/8     | 10-3/4   | 12-1/2  | 826    |
| 16DF5R-36-362IX | 16   | 22-1/4     | 12       | 14-3/8  | 951    |
| 18DF5R-36-362IX | 18   | 24-1/8     | 14-1/4   | 16-1/8  | 1433   |
| 20DF5R-36-362IX | 20   | 26-7/8     | 14-1/2   | 18      | 1763   |
| 24DF5R-36-362IX | 24   | 31-1/8     | 17-1/4   | 21-9/16 | 2755   |
| 30DF5R-36-362IX | 30   | 38-1/4     | 19-7/8   | 28-3/4  | 5070   |
| 36DF5R-36-362IX | 36   | 44-1/2     | 25       | 33-3/4  | 7605   |
| 42DF5R-36-362IX | 42   | 48         | 27-37/64 | 39-1/2  | 9985   |

\*Minimum companion flange bore.

Sizes 30" and larger fit **Series A** flanges.


Available with thru-hole bolting or threaded bolt holes

†See "Style DF Product Number Configuration" for additional options.



**APPLICABLE STANDARDS**

|                             |               |
|-----------------------------|---------------|
| • Design ASME B16.5, B16.34 | • MSS SP – 6  |
| • Conform to API 594 & 6D   | • MSS SP – 25 |
| • Testing API 598           | • MSS SP – 55 |

|                                                                                                                         |          |                           |
|-------------------------------------------------------------------------------------------------------------------------|----------|---------------------------|
| <br>3400 CLEVELAND SKOKIE ILLINOIS |          | DRAWING NO.<br>AL 105420  |
|                                                                                                                         |          | PART NO.<br>DF5R-36-362IX |
| DIMENSIONAL ASSEMBLY                                                                                                    |          | SCALE: NTS                |
| 600# Retainerless Wafer Double Flange Body                                                                              |          | DATE: 07/01/2011          |
| Double Disc Check Valve                                                                                                 |          | DR. BY DSF                |
| MAT'L: Cast Stainless Steel (316)                                                                                       | REQ. --- |                           |