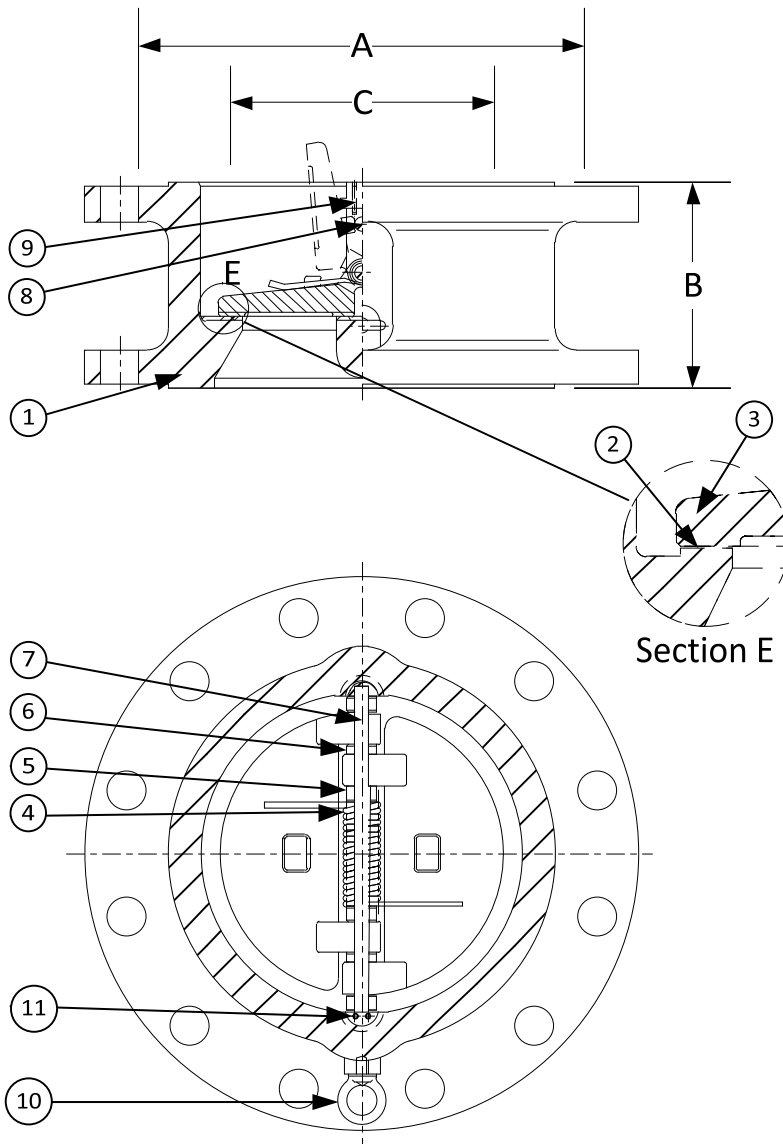


DRAWING NO.
AL 105580

| BODY PRESSURE & TEMPERATURE RATINGS - NON SHOCK | | |
|---|--------|------------------|
| NOM. RATING | MEDIA | 12" to 24" |
| 900# (WAFER DOUBLE FLANGE) | W.O.G. | 2220 PSI @ 100°F |



| PARTS LIST | | |
|------------|----------------|---|
| ITEM | DESCRIPTION | MATERIAL |
| 1 | BODY | CARBON STEEL (ASTM A 216, GRADE WCB) |
| 2 | SEAT* | CARBON STEEL (ASTM A 216, GRADE WCB) |
| 3 | DISC | STAINLESS STEEL (ASTM A 351, GRADE CF8M) |
| 4 | SPRING | INCONEL X-750 |
| 5 | SPRING PLATE | STAINLESS STEEL (ASTM A 182, GRADE F-316) |
| 6 | THRUST WASHER | STAINLESS STEEL (ASTM A 182, GRADE F-316) |
| 7 | HINGE PIN | STAINLESS STEEL (ASTM A 182, GRADE F-316) |
| 8 | STOP PIN | STAINLESS STEEL (ASTM A 182, GRADE F-316) |
| 9 | LOCATING PIECE | STAINLESS STEEL (ASTM A 182, GRADE F-316) |
| 10 | LIFTING LUG | CARBON STEEL |
| 11 | SCREW | STAINLESS STEEL (316) |

*Other Seat Materials Available in Viton, EPDM, PTFE, and Neoprene.

| PRODUCT NUMBER† | SIZE | DIMENSIONS | | | WEIGHT |
|-----------------|------|------------|--------|--------|--------|
| | | A | B | C* | |
| 12DF6R-CS-362IX | 12 | 19-5/8 | 11-1/2 | 10-1/8 | 770 |
| 14DF6R-CS-362IX | 14 | 20-1/2 | 14 | 11-1/2 | 1240 |
| 16DF6R-CS-362IX | 16 | 22-5/8 | 15-1/8 | 12-7/8 | 1653 |
| 18DF6R-CS-362IX | 18 | 25-1/8 | 17-3/4 | 14-1/2 | 2314 |
| 20DF6R-CS-362IX | 20 | 27-1/2 | 17-3/4 | 18 | 2866 |
| 24DF6R-CS-362IX | 24 | 33 | 19-1/2 | 21-1/2 | 4175 |

*Minimum companion flange bore.

Available with thru-hole bolting or threaded bolt holes

†See "Style DF Product Number Configuration" for additional options.

APPLICABLE STANDARDS

| | |
|-----------------------------|---------------|
| • Design ASME B16.5, B16.34 | • MSS SP - 6 |
| • Conform to API 594 & 6D | • MSS SP - 25 |
| • Testing API 598 | • MSS SP - 55 |

KECKLEY

3400 CLEVELAND SKOKIE ILLINOIS

DRAWING NO.
AL 105580

DIMENSIONAL ASSEMBLY

900# Retainerless Wafer Double Flange Body

Double Disc Check Valve

MAT'L: Cast Carbon Steel

REQ. ---

PART NO.
DF6R-CS-362IX

SCALE: NTS

DATE: 07/01/2011

DR. BY DSF