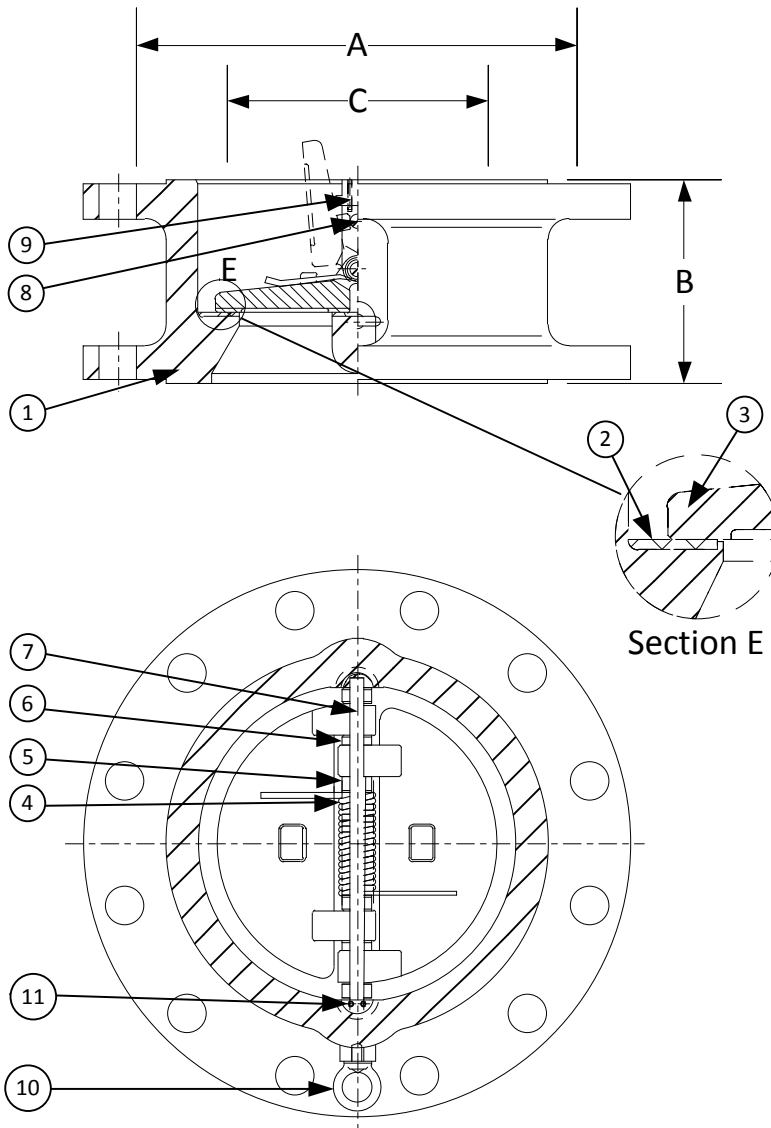


DRAWING NO.
AL 104580

BODY PRESSURE & TEMPERATURE RATINGS – NON SHOCK		
NOM. RATING	MEDIA	12" to 24"
900# (WAFER DOUBLE FLANGE)	W.O.G.	2220 PSI @ 100°F



PARTS LIST		
ITEM	DESCRIPTION	MATERIAL
1	BODY	CARBON STEEL (ASTM A 216, GRADE WCB)
2	SEAT*	VITON O-RING
3	DISC	STAINLESS STEEL (ASTM A 351, GRADE CF8M)
4	SPRING	INCONEL X-750
5	SPRING PLATE	STAINLESS STEEL (ASTM A 182, GRADE F-316)
6	THRUST WASHER	STAINLESS STEEL (ASTM A 182, GRADE F-316)
7	HINGE PIN	STAINLESS STEEL (ASTM A 182, GRADE F-316)
8	STOP PIN	STAINLESS STEEL (ASTM A 182, GRADE F-316)
9	LOCATING PIECE	STAINLESS STEEL (ASTM A 182, GRADE F-316)
10	LIFTING LUG	CARBON STEEL
11	SCREW	STAINLESS STEEL (316)

*Other Seat Materials Available in Buna, EPDM, PTFE, and Neoprene.

PRODUCT NUMBER†	SIZE	DIMENSIONS			WEIGHT
		A	B	C*	
12DF6R-CS-364IX	12	19-5/8	11-1/2	10-1/8	770
14DF6R-CS-364IX	14	20-1/2	14	11-1/2	1240
16DF6R-CS-364IX	16	22-5/8	15-1/8	12-7/8	1653
18DF6R-CS-364IX	18	25-1/8	17-3/4	14-1/2	2314
20DF6R-CS-364IX	20	27-1/2	17-3/4	18	2866
24DF6R-CS-364IX	24	33	19-1/2	21-1/2	4175

*Minimum companion flange bore.

Available with thru-hole bolting or threaded bolt holes

†See "Style DF Product Number Configuration" for additional options.

APPLICABLE STANDARDS

• Design ASME B16.5, B16.34	• MSS SP – 6
• Conform to API 594 & 6D	• MSS SP – 25
• Testing API 598	• MSS SP – 55

KECKLEY

3400 CLEVELAND SKOKIE ILLINOIS

DRAWING NO.
AL 104580

DIMENSIONAL ASSEMBLY

900# Retainerless Wafer Double Flange Body

Double Disc Check Valve

MAT'L: Cast Carbon Steel

REQ. ---

PART NO.
DF6R-CS-364IX

SCALE: NTS

DATE: 11/21/2018

DR. BY DSF