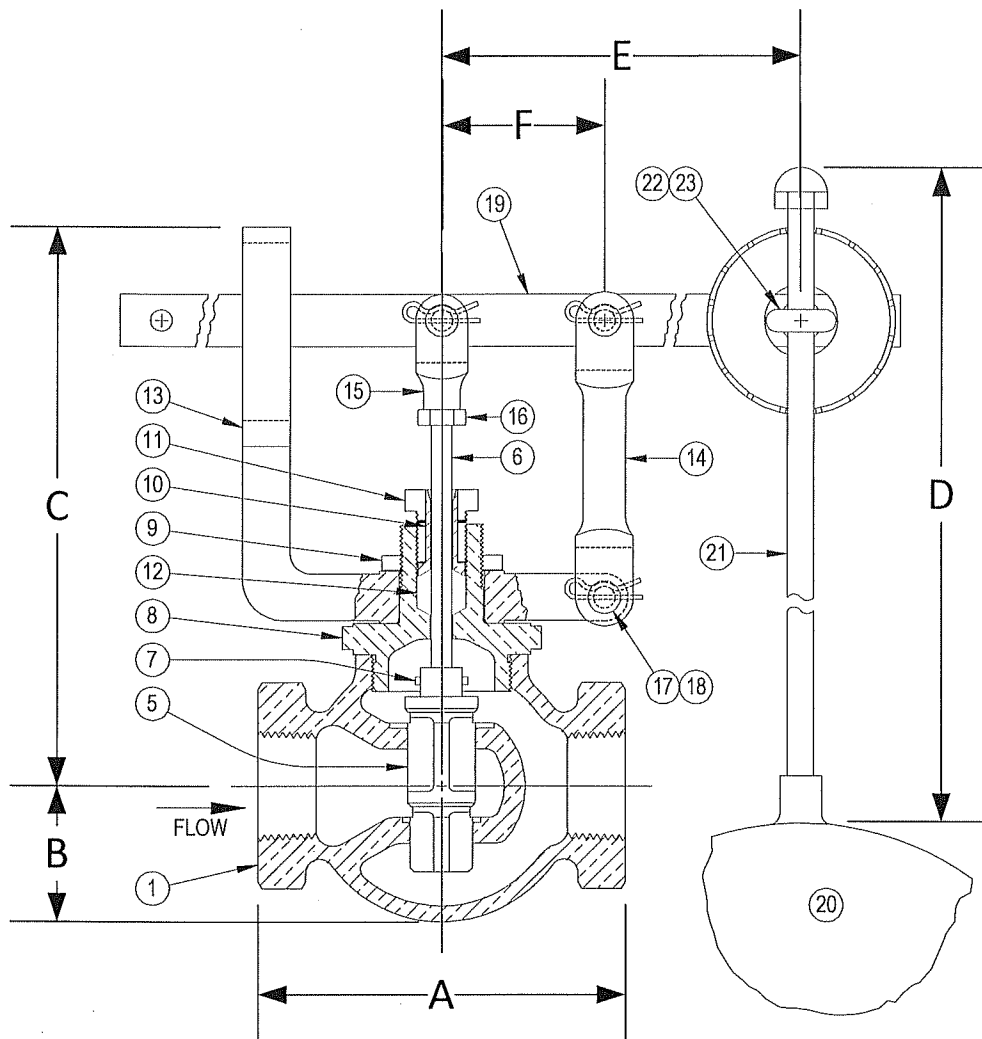


DRAWING NO.



PARTS LIST

Item	Description	Material
1	BODY	CAST IRON (ASTM A 126, CLASS B)
2		
3		
4		
5	INNER VALVE	CAST IRON (ASTM A 126, CLASS B)
*6	VALVE STEM	STAINLESS STEEL
*7	ROLL PIN	STAINLESS STEEL
8	PACKING BOX (BONNET)	BRONZE (ASTM B 62, C83600)
9	YOKE LOCKNUT	BRONZE (ASTM B 62, C83600)
10	PACKING GLAND	BRASS
11	PACKING NUT	BRASS
*12	PACKING	TEFLON
13	GUIDE YOKE	BRONZE (ASTM B 62, C83600)
14	GUIDE ARM	BRONZE (ASTM B 62, C83600)
15	STEM CLEVIS	BRONZE (ASTM B 62, C83600)
16	CLEVIS LOCKNUT	BRASS
17	PIVOT PIN(S)	STEEL
18	PIVOT PIN RETAINER(S)	STEEL
19	LEVER ASSEMBLY	STEEL
20	FLOAT BALL	STAINLESS STEEL (304)
21	FLOAT ROD	BRASS
22	ROD RETAINER	STEEL
23	ROD RETAINER NUT	STEEL

*Denotes parts included in the rebuild kit.

Size	DIMENSIONS							Float Dia.	Max Inlet	WEIGHT
	A	B	C	D	E	F				
(in)	(in)	(in)	(in)	(in)	(in)	(in)	(in)	(PSI)	(lbs)	
1/2	4	1-1/2	6-1/8	16	13-11/16	1-15/16	7	150	10	
3/4	4	1-1/2	6-1/8	16	13-11/16	1-15/16	7	150	10	
1	4-3/8	1-5/8	6-5/16	16	13-11/16	1-15/16	7	150	13	
1-1/4	4-1/2	1-3/4	6-3/4	16	13-11/16	1-15/16	7	120	14	
1-1/2	4-1/2	1-3/4	6-3/4	16	13-11/16	1-15/16	7	120	14	

KECKLEY

3400 CLEVELAND SKOKIE ILLINOIS

DRAWING NO.

DIMENSIONAL ASSEMBLY

PART NO.

250Lb. Threaded Type 27 Globe

SCALE: NTS

Float Valve

DATE: 09/01/2011

MAT'L: Iron Body / Iron Trim

REQ. ---

DR. BY DSF