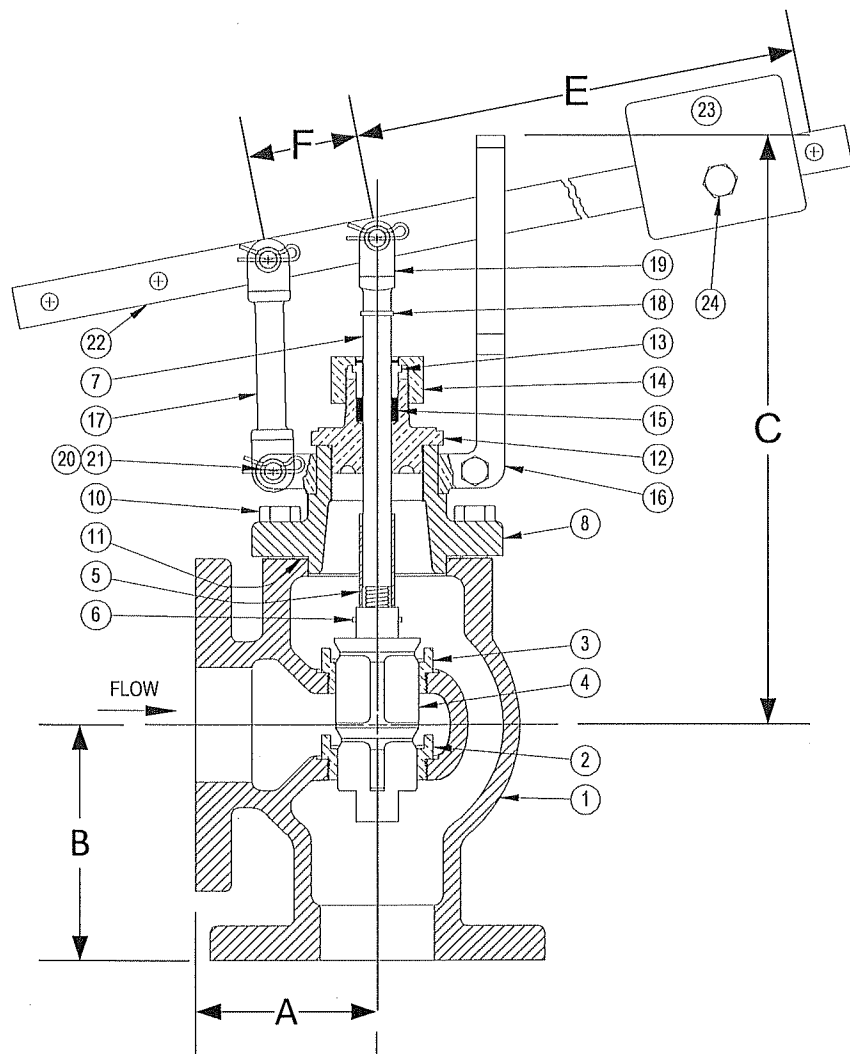


DRAWING NO.



PARTS LIST

Item	Description	Material
1	BODY	CAST IRON (ASTM A 126, CLASS B)
*2	SEAT BUSHING (SMALL - LOWER)	BRONZE (ASTM B 62, C83600)
*3	SEAT BUSHING (LARGER - UPPER)	BRONZE (ASTM B 62, C83600)
*4	MAIN VALVE	BRONZE (ASTM B 62, C83600)
*5	SPACER	BRASS
6	ROLL PIN	STAINLESS STEEL
*7	VALVE STEM	BRASS
8	TOP CAP	CAST IRON (ASTM A 126, CLASS B)
9		
10	CAP SCREW(S)	STEEL
*11	GASKET	FIBER
12	PACKING BOX (BONNET)	BRONZE (ASTM B 62, C83600)
13	PACKING GLAND	BRONZE (ASTM B 62, C83600)
14	PACKING NUT	BRONZE (ASTM B 62, C83600)
*15	PACKING	TEFLON
16	GUIDE YOKE	BRONZE (ASTM B 62, C83600)
17	GUIDE ARM	BRONZE (ASTM B 62, C83600)
18	CLEVIS LOCKWASHER	STEEL
19	STEM CLEVIS	BRONZE (ASTM B 62, C83600)
20	PIVOT PIN(S)	STEEL
21	PIVOT PIN RETAINER(S)	STEEL
22	LEVER	STEEL
23	WEIGHT	STEEL
24	SET SCREW	STEEL

*Denotes parts included in the rebuild kit.

Size	DIMENSIONS						WEIGHT
	A	B	C	E	F	Max Inlet	
(in)	(in)	(in)	(in)	(in)	(in)	(PSI)	(lbs)
2	3-1/4	4-1/4	10-3/4	14-3/4	2	75	36
2-1/2	4-1/16	5-7/8	11-1/4	14-3/4	2	60	64
3	4-5/8	5-3/4	11-7/16	14-3/4	2	50	83
4	5-3/8	6-15/16	12-1/4	14-3/4	2	35	117
5	6-5/8	6-5/8	15-1/4	18-1/2	2-1/2	30	163
6	6-1/2	8-7/16	16	18-1/2	2-1/2	25	188
8	8-3/8	8-3/8	21-1/8	21	3	20	335
10	10-1/4	10-1/4	22-13/16	21	3	15	472
12	11-7/8	11-7/8	24-13/16	21	3	12	708



3400 CLEVELAND SKOKIE ILLINOIS

DRAWING NO.

DIMENSIONAL ASSEMBLY

PART NO.

125Lb. Flange Type 62 Angle

SCALE: NTS

Lever Valve

DATE: 09/01/2011

MAT'L: Iron Body / Bronze Trim

REQ. ---

DR. BY DSF