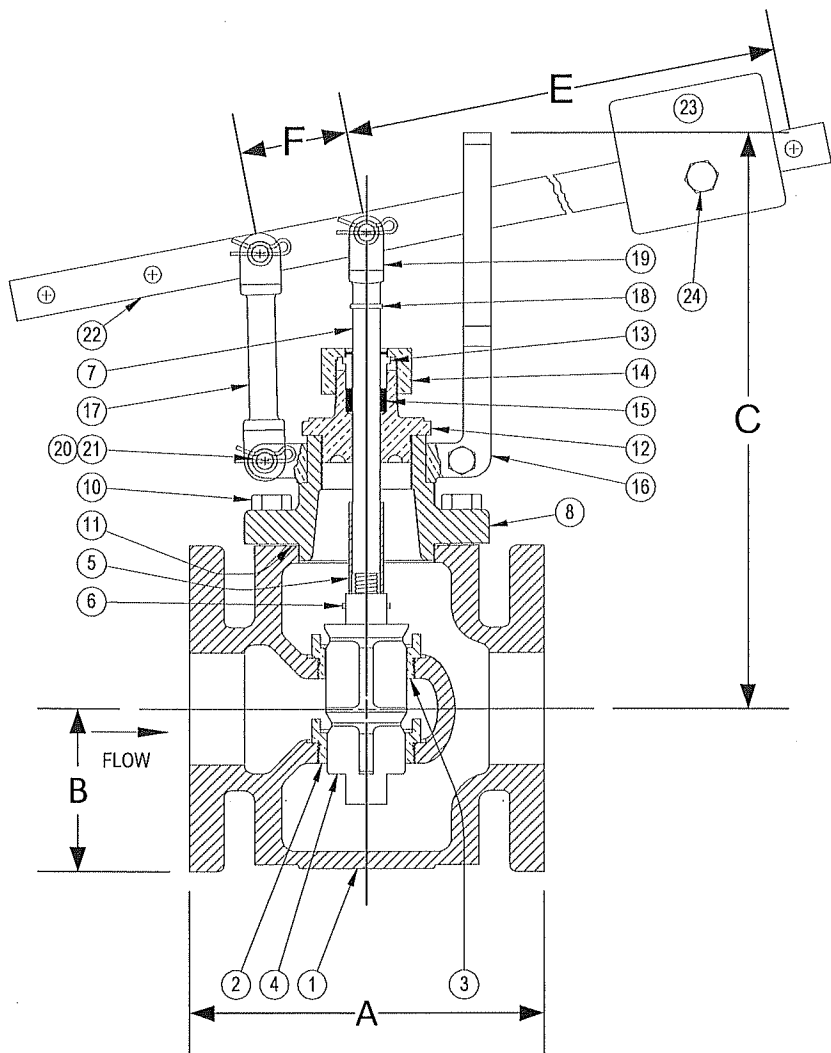


DRAWING NO.



PARTS LIST

Item	Description	Material
1	BODY	CAST IRON (ASTM A 126, CLASS B)
*2	SEAT BUSHING (SMALL - LOWER)	STAINLESS STEEL
*3	SEAT BUSHING (LARGER - UPPER)	STAINLESS STEEL
*4	MAIN VALVE	STAINLESS STEEL
*5	SPACER	STAINLESS STEEL
6	ROLL PIN	STAINLESS STEEL
*7	VALVE STEM	STAINLESS STEEL
8	TOP CAP	CAST IRON (ASTM A 126, CLASS B)
9		
10	CAP SCREW(S)	STEEL
*11	GASKET	FIBER
12	PACKING BOX (BONNET)	BRONZE (ASTM B 62, C83600)
13	PACKING GLAND	BRONZE (ASTM B 62, C83600)
14	PACKING NUT	BRONZE (ASTM B 62, C83600)
*15	PACKING	TEFLON
16	GUIDE YOKE	BRONZE (ASTM B 62, C83600)
17	GUIDE ARM	BRONZE (ASTM B 62, C83600)
18	CLEVIS LOCKWASHER	STEEL
19	STEM CLEVIS	BRONZE (ASTM B 62, C83600)
20	PIVOT PIN(S)	STEEL
21	PIVOT PIN RETAINER(S)	STEEL
22	LEVER	STEEL
23	WEIGHT	STEEL
24	SET SCREW	STEEL

*Denotes parts included in the rebuild kit.

Size	DIMENSIONS						WEIGHT (lbs)
	A (in)	B (in)	C (in)	E (in)	F (in)	Max Inlet (PSI)	
2	6-1/2	3	10-3/4	14-3/4	2	75	36
2-1/2	7-7/8	4-5/16	11-1/4	14-3/4	2	60	64
3	4-5/8	6-1/8	11-7/16	14-3/4	2	50	83
4	10-3/4	5-5/16	12-1/4	14-3/4	2	35	117
5	12	6-3/16	15-1/4	18-1/2	2-1/2	30	163
6	13	7-1/8	16	18-1/2	2-1/2	25	188
8	16-3/4	8-5/8	21-1/8	21	3	20	335
10	20-1/4	9-3/16	22-13/16	21	3	15	472
12	22-5/8	11-3/8	24-13/16	21	3	12	708

KECKLEY

3400 CLEVELAND SKOKIE ILLINOIS

DRAWING NO.

DIMENSIONAL ASSEMBLY

PART NO.

125Lb. Flange Type 62 Globe

SCALE: NTS

Lever Valve

DATE: 09/01/2011

MAT'L: Iron Body / SS Trim

REQ. ---

DR. BY DSF