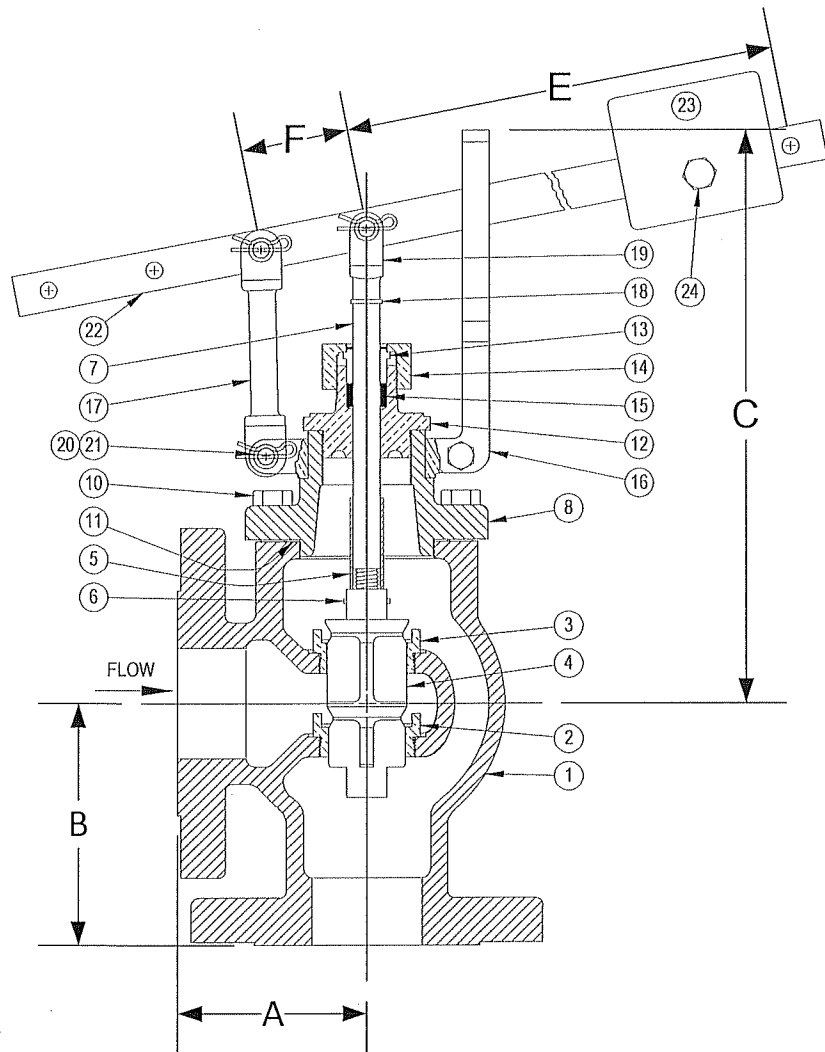


DRAWING NO.




PARTS LIST

Item	Description	Material
1	BODY	CAST IRON (ASTM A 126, CLASS B)
*2	SEAT BUSHING (SMALL – LOWER)	BRONZE (ASTM B 62, C83600)
*3	SEAT BUSHING (LARGER – UPPER)	BRONZE (ASTM B 62, C83600)
*4	MAIN VALVE	BRONZE (ASTM B 62, C83600)
*5	SPACER	BRASS
6	ROLL PIN	STAINLESS STEEL
*7	VALVE STEM	BRASS
8	TOP CAP	CAST IRON (ASTM A 126, CLASS B)
9		
10	CAP SCREW(S)	STEEL
*11	GASKET	FIBER
12	PACKING BOX (BONNET)	BRONZE (ASTM B 62, C83600)
13	PACKING GLAND	BRONZE (ASTM B 62, C83600)
14	PACKING NUT	BRONZE (ASTM B 62, C83600)
*15	PACKING	TEFLON
16	GUIDE YOKE	BRONZE (ASTM B 62, C83600)
17	GUIDE ARM	BRONZE (ASTM B 62, C83600)
18	CLEVIS LOCKWASHER	STEEL
19	STEM CLEVIS	BRONZE (ASTM B 62, C83600)
20	PIVOT PIN(S)	STEEL
21	PIVOT PIN RETAINER(S)	STEEL
22	LEVER	STEEL
23	WEIGHT	STEEL
24	SET SCREW	STEEL

*Denotes parts included in the rebuild kit.

Size	DIMENSIONS						WEIGHT (lbs)
	A (in)	B (in)	C (in)	E (in)	F (in)	Max Inlet (PSI)	
2	3-1/2	4-1/2	10-3/4	14-3/4	2	75	40
2-1/2	4-3/8	6-3/16	11-1/4	14-3/4	2	60	70
3	5	6-1/8	11-7/16	14-3/4	2	50	97
4	5-11/16	7-1/4	12-1/4	14-3/4	2	35	134
5	7-1/16	7-1/16	15-1/4	18-1/2	2-1/2	30	185
6	6-15/16	8-7/8	16	18-1/2	2-1/2	25	223
8	8-7/8	8-7/8	21-1/8	21	3	20	402
10	10-15/16	10-15/16	22-13/16	21	3	15	564
12	12-5/8	12-5/8	24-13/16	21	3	12	846

		DRAWING NO.
3400 CLEVELAND SKOKIE ILLINOIS		
DIMENSIONAL ASSEMBLY		PART NO.
250Lb. Flange Type 62 Angle		SCALE: NTS
Lever Valve		DATE: 09/01/2011
MAT'L: Iron Body / Bronze Trim	REQ. ---	DR. BY DSF