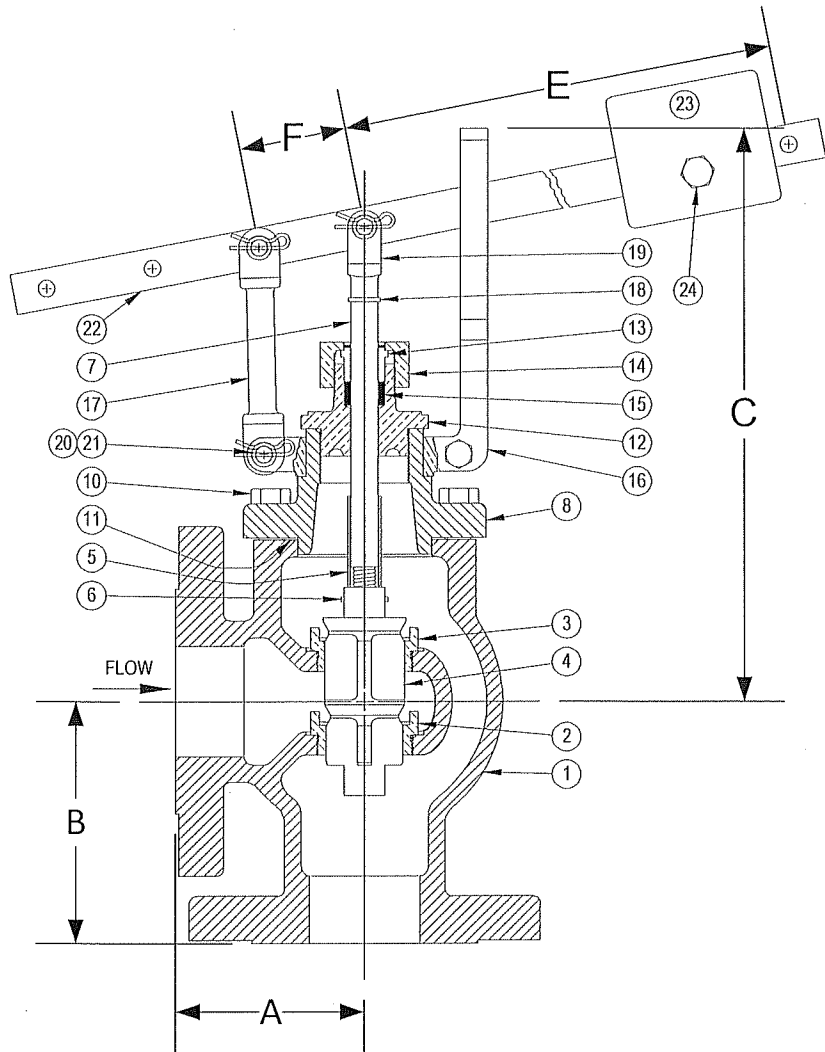


DRAWING NO.




PARTS LIST

| Item | Description | Material |
|------|-------------------------------|---------------------------------|
| 1 | BODY | CAST IRON (ASTM A 126, CLASS B) |
| *2 | SEAT BUSHING (SMALL - LOWER) | STAINLESS STEEL |
| *3 | SEAT BUSHING (LARGER - UPPER) | STAINLESS STEEL |
| *4 | MAIN VALVE | STAINLESS STEEL |
| *5 | SPACER | STAINLESS STEEL |
| 6 | ROLL PIN | STAINLESS STEEL |
| *7 | VALVE STEM | STAINLESS STEEL |
| 8 | TOP CAP | CAST IRON (ASTM A 126, CLASS B) |
| 9 | | |
| 10 | CAP SCREW(S) | STEEL |
| *11 | GASKET | FIBER |
| 12 | PACKING BOX (BONNET) | BRONZE (ASTM B 62, C83600) |
| 13 | PACKING GLAND | BRONZE (ASTM B 62, C83600) |
| 14 | PACKING NUT | BRONZE (ASTM B 62, C83600) |
| *15 | PACKING | TEFLON |
| 16 | GUIDE YOKE | BRONZE (ASTM B 62, C83600) |
| 17 | GUIDE ARM | BRONZE (ASTM B 62, C83600) |
| 18 | CLEVIS LOCKWASHER | STEEL |
| 19 | STEM CLEVIS | BRONZE (ASTM B 62, C83600) |
| 20 | PIVOT PIN(S) | STEEL |
| 21 | PIVOT PIN RETAINER(S) | STEEL |
| 22 | LEVER | STEEL |
| 23 | WEIGHT | STEEL |
| 24 | SET SCREW | STEEL |

*Denotes parts included in the rebuild kit.

| Size | DIMENSIONS | | | | | | WEIGHT (lbs) |
|-------|------------|-----------|-----------|-----------|-----------|--------------------|-----------------|
| | A (in) | B (in) | C (in) | E (in) | F (in) | Max Inlet (PSI) | |
| 2 | 3-1/2 | 4-1/2 | 10-3/4 | 14-3/4 | 2 | 75 | 40 |
| 2-1/2 | 4-3/8 | 6-3/16 | 11-1/4 | 14-3/4 | 2 | 60 | 70 |
| 3 | 5 | 6-1/8 | 11-7/16 | 14-3/4 | 2 | 50 | 97 |
| 4 | 5-11/16 | 7-1/4 | 12-1/4 | 14-3/4 | 2 | 35 | 134 |
| 5 | 7-1/16 | 7-1/16 | 15-1/4 | 18-1/2 | 2-1/2 | 30 | 185 |
| 6 | 6-15/16 | 8-7/8 | 16 | 18-1/2 | 2-1/2 | 25 | 223 |
| 8 | 8-7/8 | 8-7/8 | 21-1/8 | 21 | 3 | 20 | 402 |
| 10 | 10-15/16 | 10-15/16 | 22-13/16 | 21 | 3 | 15 | 564 |
| 12 | 12-5/8 | 12-5/8 | 24-13/16 | 21 | 3 | 12 | 846 |

| | | |
|---|----------|------------------|
|  | | DRAWING NO. |
| 3400 CLEVELAND SKOKIE ILLINOIS | | |
| DIMENSIONAL ASSEMBLY | | PART NO. |
| 250Lb. Flange Type 62 Angle | | SCALE: NTS |
| Lever Valve | | DATE: 09/01/2011 |
| MAT'L: Iron Body / SS Trim | REQ. --- | DR. BY DSF |