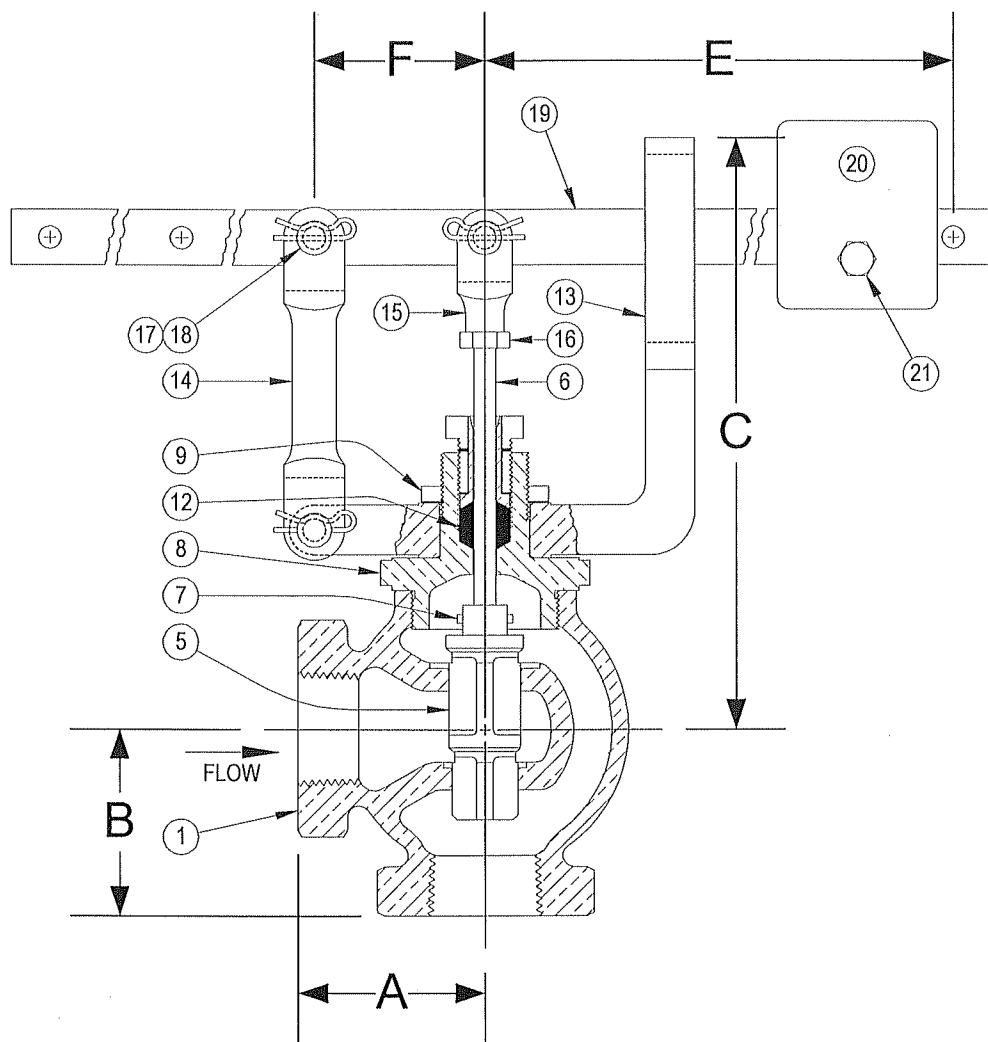


DRAWING NO.



PARTS LIST

Item	Description	Material
1	BODY	STAINLESS STEEL (ASTM A 351, GRADE CF8M)
2		
3		
4		
5	INNER VALVE	STAINLESS STEEL (ASTM A 351, GRADE CF8M)
*6	VALVE STEM	STAINLESS STEEL
*7	ROLL PIN	STAINLESS STEEL
8	PACKING BOX (BONNET)	STAINLESS STEEL (ASTM A 351, GRADE CF8M)
9	YOKE LOCKNUT	STAINLESS STEEL (ASTM A 351, GRADE CF8M)
10	PACKING GLAND	STAINLESS STEEL
11	PACKING NUT	STAINLESS STEEL
*12	PACKING	TEFLON
13	GUIDE YOKE	STAINLESS STEEL (ASTM A 351, GRADE CF8M)
14	GUIDE ARM	STAINLESS STEEL (ASTM A 351, GRADE CF8M)
15	STEM CLEVIS	STAINLESS STEEL (ASTM A 351, GRADE CF8M)
16	CLEVIS LOCKNUT	STAINLESS STEEL
17	PIVOT PIN(S)	STAINLESS STEEL
18	PIVOT PIN RETAINER(S)	STAINLESS STEEL
19	LEVER	STAINLESS STEEL
20	WEIGHT	STEEL
21	SET SCREW	STEEL

*Denotes parts included in the rebuild kit.

Size	DIMENSIONS						WEIGHT
	A	B	C	E	F	Max Inlet	
(in)	(in)	(in)	(in)	(in)	(in)	(PSI)	(lbs)
1/2	2	2	6-1/8	11-5/16	1-15/16	150	10
3/4	2	2	6-1/8	11-5/16	1-15/16	150	10
1	2-1/8	2-1/8	6-5/16	11-5/16	1-15/16	150	11
1-1/4	2-1/4	2-1/4	6-3/4	11-5/16	1-15/16	120	11
1-1/2	2-1/4	2-1/4	6-3/4	11-5/16	1-15/16	120	12

KECKLEY

3400 CLEVELAND SKOKIE ILLINOIS

DRAWING NO.

DIMENSIONAL ASSEMBLY

PART NO.

250Lb. Threaded Type 62 Angle

SCALE: NTS

Lever Valve

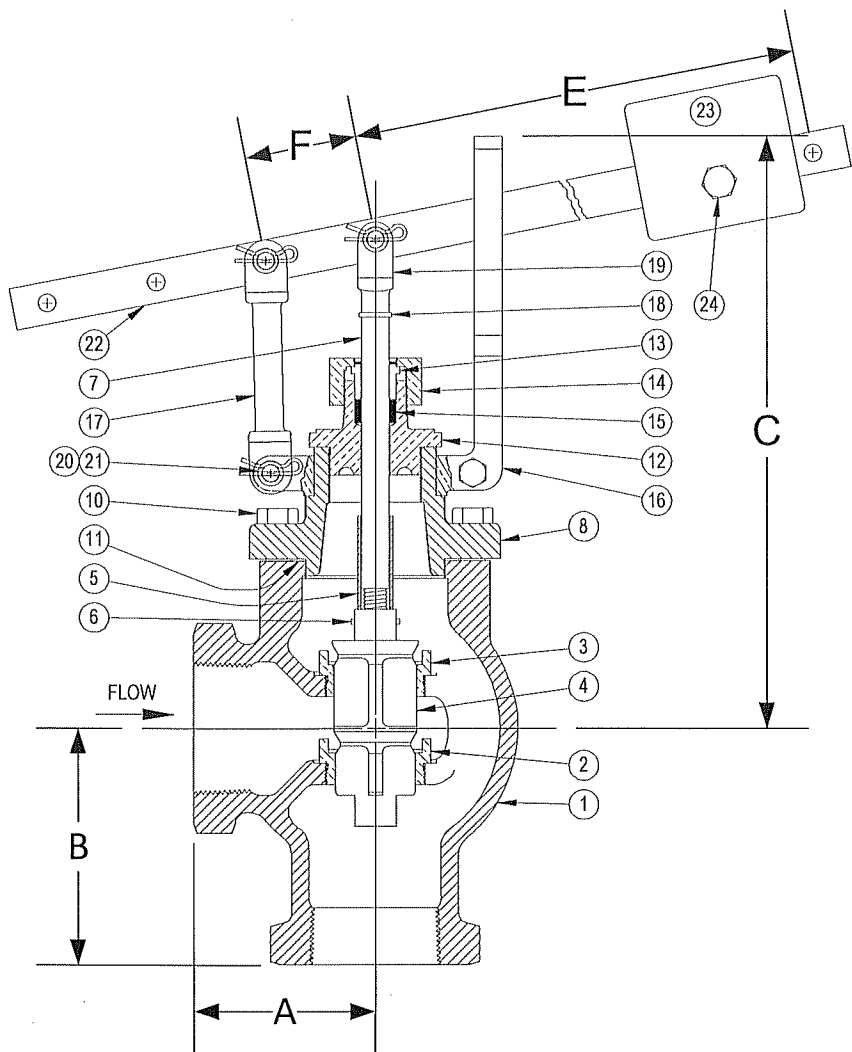
DATE: 09/01/2011

MAT'L: SS Body / SS Trim

REQ. ---

DR. BY DSF

DRAWING NO.



PARTS LIST

Item	Description	Material
1	BODY	STAINLESS STEEL (ASTM A 351, GRADE CF8M)
*2	SEAT BUSHING (SMALL - LOWER)	STAINLESS STEEL (ASTM A 351, GRADE CF8M)
*3	SEAT BUSHING (LARGER - UPPER)	STAINLESS STEEL (ASTM A 351, GRADE CF8M)
*4	MAIN VALVE	STAINLESS STEEL (ASTM A 351, GRADE CF8M)
*5	SPACER	STAINLESS STEEL
6	ROLL PIN	STAINLESS STEEL
*7	VALVE STEM	STAINLESS STEEL
8	TOP CAP	STAINLESS STEEL (ASTM A 351, GRADE CF8M)
9		
10	CAP SCREW(S)	STAINLESS STEEL
*11	GASKET	FIBER
12	PACKING BOX (BONNET)	STAINLESS STEEL (ASTM A 351, GRADE CF8M)
13	PACKING GLAND	STAINLESS STEEL (ASTM A 351, GRADE CF8M)
14	PACKING NUT	STAINLESS STEEL (ASTM A 351, GRADE CF8M)
*15	PACKING	TEFLON
16	GUIDE YOKE	STAINLESS STEEL (ASTM A 351, GRADE CF8M)
17	GUIDE ARM	STAINLESS STEEL (ASTM A 351, GRADE CF8M)
18	CLEVIS LOCKWASHER	STAINLESS STEEL
19	STEM CLEVIS	STAINLESS STEEL (ASTM A 351, GRADE CF8M)
20	PIVOT PIN(S)	STAINLESS STEEL
21	PIVOT PIN RETAINER(S)	STAINLESS STEEL
22	LEVER	STAINLESS STEEL (ASTM A 351, GRADE CF8M)
23	WEIGHT	STEEL
24	SET SCREW	STEEL

*Denotes parts included in the rebuild kit.

Size	DIMENSIONS						WEIGHT
	A	B	C	E	F	Max Inlet	
(in)	(in)	(in)	(in)	(in)	(in)	(PSI)	(lbs)
2	3-1/4	4-1/4	10-3/4	14-3/4	2	75	26

KECKLEY

3400 CLEVELAND SKOKIE ILLINOIS

DRAWING NO.

DIMENSIONAL ASSEMBLY

PART NO.

250Lb. Threaded Type 62 Angle

SCALE: NTS

Lever Valve

DATE: 09/01/2011

MAT'L: SS Body / SS Trim

REQ. ---

DR. BY DSF