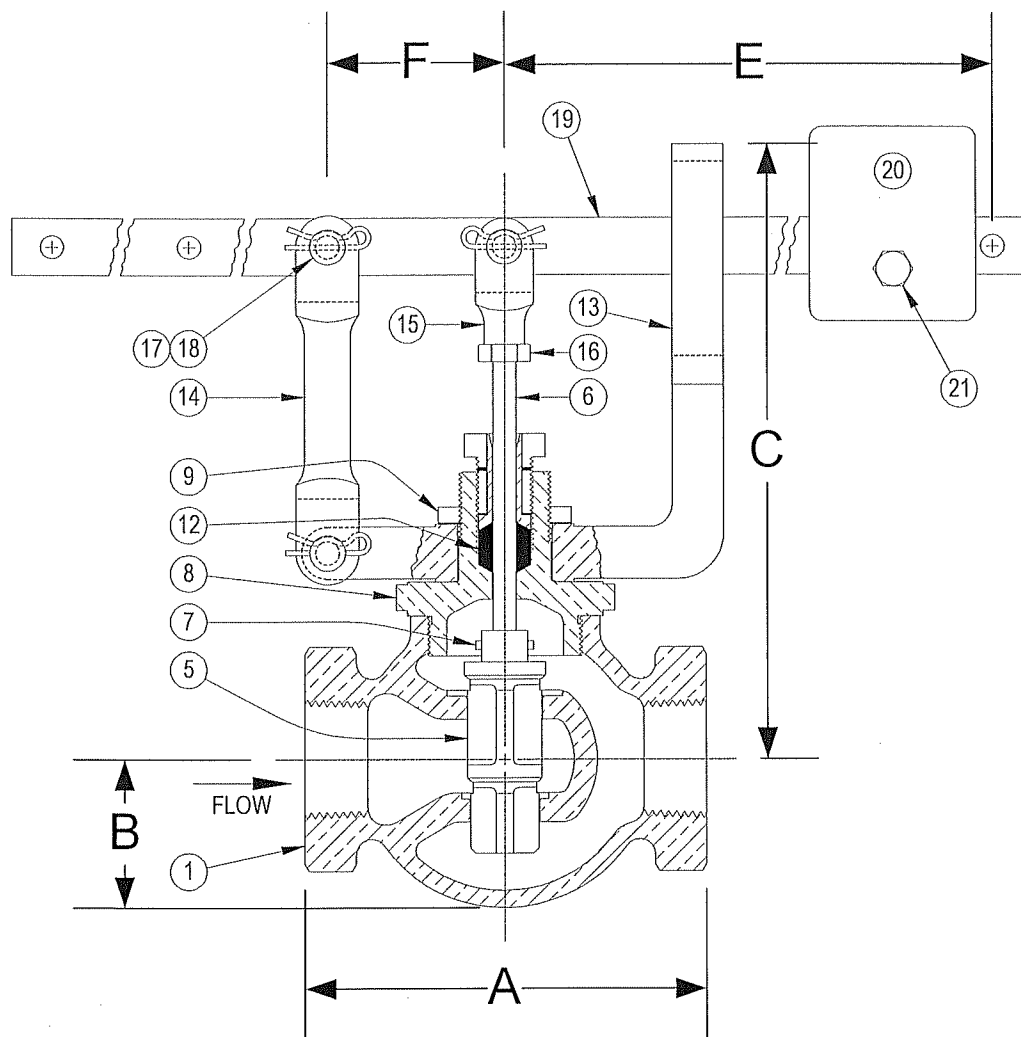


DRAWING NO.




PARTS LIST

Item	Description	Material
1	BODY	CAST IRON (ASTM A 126, CLASS B)
2		
3		
4		
5	INNER VALVE	CAST IRON (ASTM A 126, CLASS B)
*6	VALVE STEM	STAINLESS STEEL
*7	ROLL PIN	STAINLESS STEEL
8	PACKING BOX (BONNET)	BRONZE (ASTM B 62, C83600)
9	YOKE LOCKNUT	BRONZE (ASTM B 62, C83600)
10	PACKING GLAND	BRASS
11	PACKING NUT	BRASS
*12	PACKING	TEFLON
13	GUIDE YOKE	BRONZE (ASTM B 62, C83600)
14	GUIDE ARM	BRONZE (ASTM B 62, C83600)
15	STEM CLEVIS	BRONZE (ASTM B 62, C83600)
16	CLEVIS LOCKNUT	BRASS
17	PIVOT PIN(S)	STEEL
18	PIVOT PIN RETAINER(S)	STEEL
19	LEVER	STEEL
20	WEIGHT	STEEL
21	SET SCREW	STEEL

*Denotes parts included in the rebuild kit.

Size	DIMENSIONS						WEIGHT (lbs)
	A (in)	B (in)	C (in)	E (in)	F (in)	Max Inlet (PSI)	
1/2	4	1-1/2	6-1/8	11-5/16	1-15/16	150	10
3/4	4	1-1/2	6-1/8	11-5/16	1-15/16	150	10
1	4-3/8	1-5/8	6-5/16	11-5/16	1-15/16	150	11
1-1/4	4-1/2	1-3/4	6-3/4	11-5/16	1-15/16	120	11
1-1/2	4-1/2	1-3/4	6-3/4	11-5/16	1-15/16	100	12

 3400 CLEVELAND SKOKIE ILLINOIS	DRAWING NO.
	PART NO.
DIMENSIONAL ASSEMBLY	SCALE: NTS
250Lb. Threaded Type 62 Globe Lever Valve	DATE: 09/01/2011
MAT'L: Iron Body / Iron Trim	REQ. --- DR. BY DSF