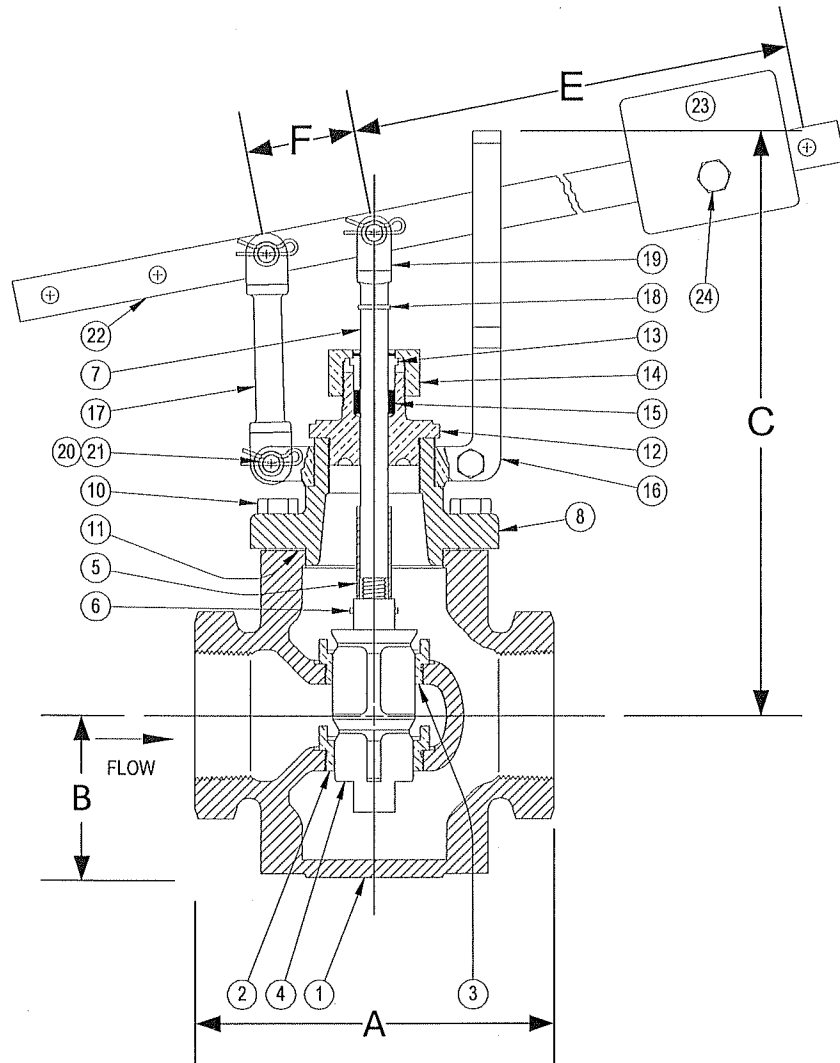


DRAWING NO.



Size	DIMENSIONS						WEIGHT
	A	B	C	E	F	Max Inlet	
(in)	(in)	(in)	(in)	(in)	(in)	(PSI)	(lbs)
2	6-1/2	3	10-3/4	14-3/4	2	75	26
2-1/2	7-7/8	4-5/16	11-1/4	14-3/4	2	60	53
3	4-5/8	6-1/8	11-7/16	14-3/4	2	50	73

PARTS LIST

Item	Description	Material
1	BODY	CAST IRON (ASTM A 126, CLASS B)
*2	SEAT BUSHING (SMALL - LOWER)	STAINLESS STEEL
*3	SEAT BUSHING (LARGER - UPPER)	STAINLESS STEEL
*4	MAIN VALVE	STAINLESS STEEL
*5	SPACER	STAINLESS STEEL
6	ROLL PIN	STAINLESS STEEL
*7	VALVE STEM	STAINLESS STEEL
8	TOP CAP	CAST IRON (ASTM A 126, CLASS B)
9		
10	CAP SCREW(S)	STEEL
*11	GASKET	FIBER
12	PACKING BOX (BONNET)	BRONZE (ASTM B 62, C83600)
13	PACKING GLAND	BRONZE (ASTM B 62, C83600)
14	PACKING NUT	BRONZE (ASTM B 62, C83600)
*15	PACKING	TEFLON
16	GUIDE YOKE	BRONZE (ASTM B 62, C83600)
17	GUIDE ARM	BRONZE (ASTM B 62, C83600)
18	CLEVIS LOCKWASHER	STEEL
19	STEM CLEVIS	BRONZE (ASTM B 62, C83600)
20	PIVOT PIN(S)	STEEL
21	PIVOT PIN RETAINER(S)	STEEL
22	LEVER	STEEL
23	WEIGHT	STEEL
24	SET SCREW	STEEL

*Denotes parts included in the rebuild kit.

3400 CLEVELAND SKOKIE ILLINOIS

DRAWING NO.

DIMENSIONAL ASSEMBLY

PART NO.

250Lb. Threaded Type 62 Globe

SCALE: NTS

Lever Valve

DATE: 09/01/2011

MAT'L: Iron Body / SS Trim

REQ. ---

DR. BY DSF