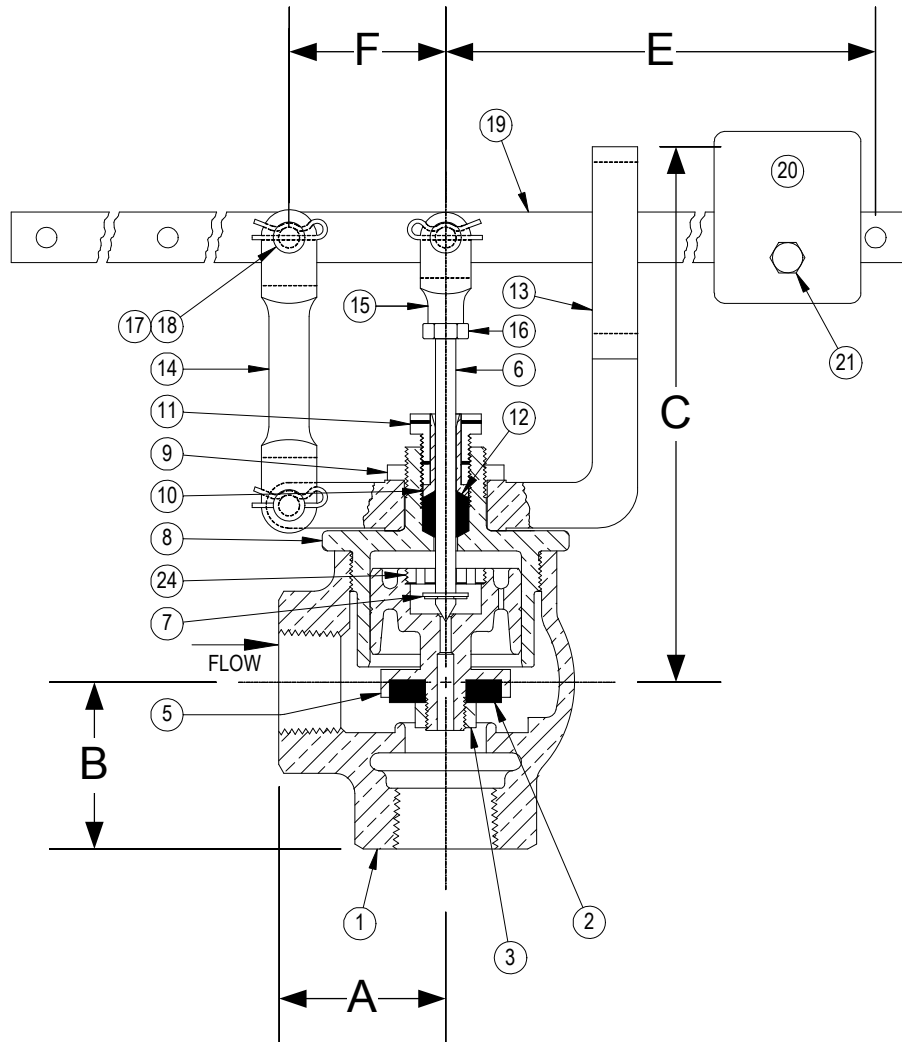


DRAWING NO.



## PARTS LIST

Item	Description	Material
1	BODY	CAST BRONZE (ASTM B 62, C83600)
*2	VALVE DISC	NITRILE
3	DISC NUT	BRASS
4		
5	INNER VALVE	CAST BRONZE (ASTM B 62, C83600)
*6	VALVE STEM	STAINLESS STEEL
*7	STEM SNAP RING	STAINLESS STEEL
8	BONNET (PACKING BOX)	BRONZE (ASTM B 62, C83600)
9	YOKE LOCKNUT	BRONZE (ASTM B 62, C83600)
10	PACKING GLAND	BRASS
11	PACKING NUT	BRASS
*12	PACKING	TEFLON
13	GUIDE YOKE	BRONZE (ASTM B 62, C83600)
14	GUIDE ARM	BRONZE (ASTM B 62, C83600)
15	STEM CLEVIS	BRONZE (ASTM B 62, C83600)
16	CLEVIS LOCKNUT	BRONZE (ASTM B 62, C83600)
17	PIVOT PINS	STEEL
18	PIVOT PIN RETAINERS	STEEL
19	LEVER	STEEL
20	WEIGHT	STEEL
21	SET SCREW	STEEL
22		
23		
24	LIFT NUT	BRASS

\*Denotes parts included in the rebuild kit.

†Suitable for temperatures up to 125°F.

Size	DIMENSIONS						WEIGHT (lbs)
	A	B	C	E	F	Max Inlet (PSI)	
(in)	(in)	(in)	(in)	(in)	(in)	(PSI)	(lbs)
1/2	2	2	6-5/16	11-5/16	1-15/16	130	10
3/4	2	2	6-5/16	11-5/16	1-15/16	130	10
1	2-1/16	2-1/16	6-5/8	11-5/16	1-15/16	100	12
1-1/4	2-1/8	2-1/8	6-5/8	11-5/16	1-15/16	80	13
1-1/2	2-1/2	2-1/2	6-7/8	11-5/16	1-15/16	65	14

3400 CLEVELAND

SKOKIE ILLINOIS

DRAWING NO.

DIMENSIONAL ASSEMBLY

PART NO.

250Lb. Threaded Type 73 Angle

SCALE: NTS

Lever Valve

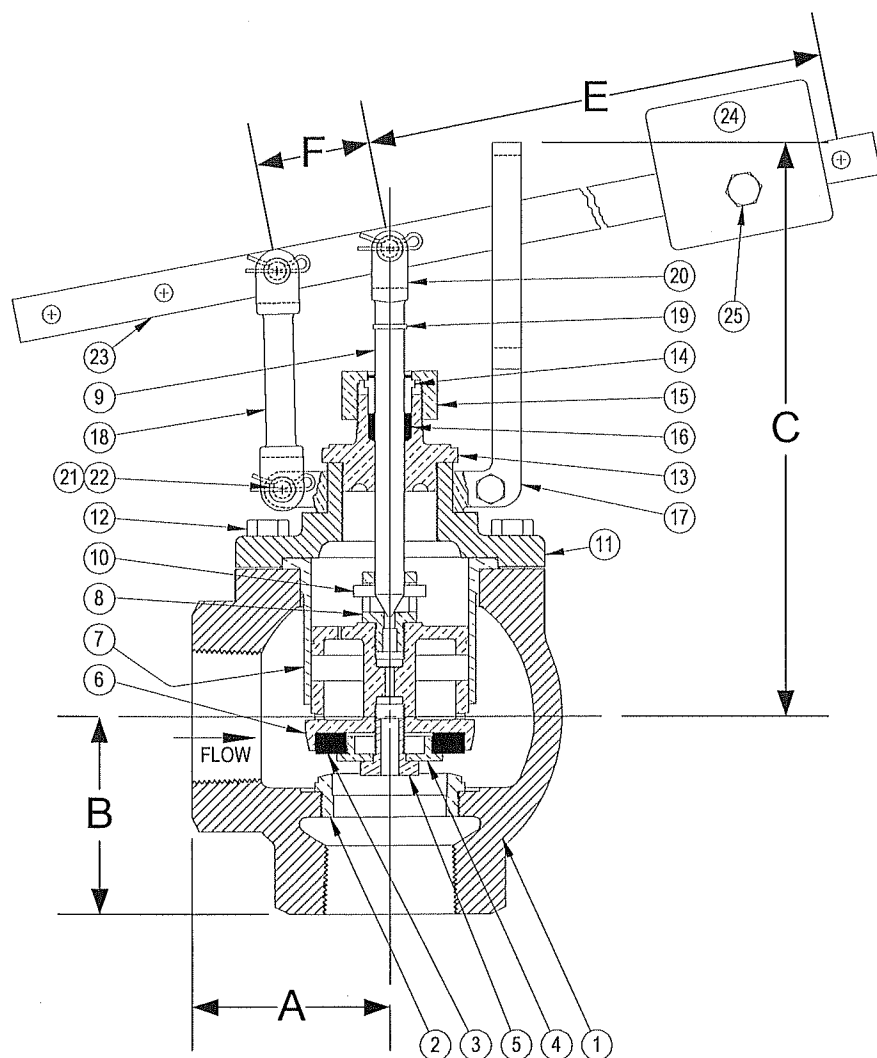
DATE: 11/01/2018

MAT'L: Bronze Body / Bronze Trim

REQ. ---

DR. BY DSF

DRAWING NO.



## PARTS LIST

Item	Description	Material
1	BODY	CAST BRONZE (ASTM B 62, C83600)
*2	SEAT BUSHING	BRONZE (ASTM B 62, C83600)
*13	VALVE DISC	NITRILE
4	DISC PLATE	BRONZE (ASTM B 62, C83600)
5	DISC PLATE SCREW	BRASS
6	INNER VALVE	BRONZE (ASTM B 62, C83600)
7	CYLINDER	BRONZE (ASTM B 62, C83600)
*8	PORT STUD	BRONZE (ASTM B 62, C83600)
*9	VALVE STEM	BRASS
*10	ROLL PIN	STAINLESS STEEL
11	TOP CAP	CAST BRONZE (ASTM B 62, C83600)
12	CAP SCREW(S)	STEEL
13	PACKING BOX (BONNET)	BRONZE (ASTM B 62, C83600)
14	PACKING GLAND	BRONZE (ASTM B 62, C83600)
15	PACKING NUT	BRONZE (ASTM B 62, C83600)
*16	PACKING	TEFLON
17	GUIDE YOKE	BRONZE (ASTM B 62, C83600)
18	GUIDE ARM	BRONZE (ASTM B 62, C83600)
19	CLEVIS LOCKWASHER	STEEL
20	STEM CLEVIS	BRONZE (ASTM B 62, C83600)
21	PIVOT PIN(S)	STEEL
22	PIVOT PIN RETAINER(S)	STEEL
23	LEVER	STEEL
24	WEIGHT	STAINLESS STEEL (304)
25	SET SCREW	STEEL

\*Denotes parts included in the rebuild kit.

†Suitable for temperatures up to 125°F.

Size	DIMENSIONS						WEIGHT
	A	B	C	E	F	Max Inlet	
(in)	(in)	(in)	(in)	(in)	(in)	(PSI)	(lbs)
2	3-7/16	3-7/16	10-1/16	14-3/4	2	50	30

3400 CLEVELAND

SKOKIE ILLINOIS

DRAWING NO.

DIMENSIONAL ASSEMBLY

PART NO.

250Lb. Threaded Type 73 Angle

SCALE: NTS

Lever Valve

DATE: 09/01/2011

MAT'L: Bronze Body / Bronze Trim

REQ. ---

DR. BY DSF