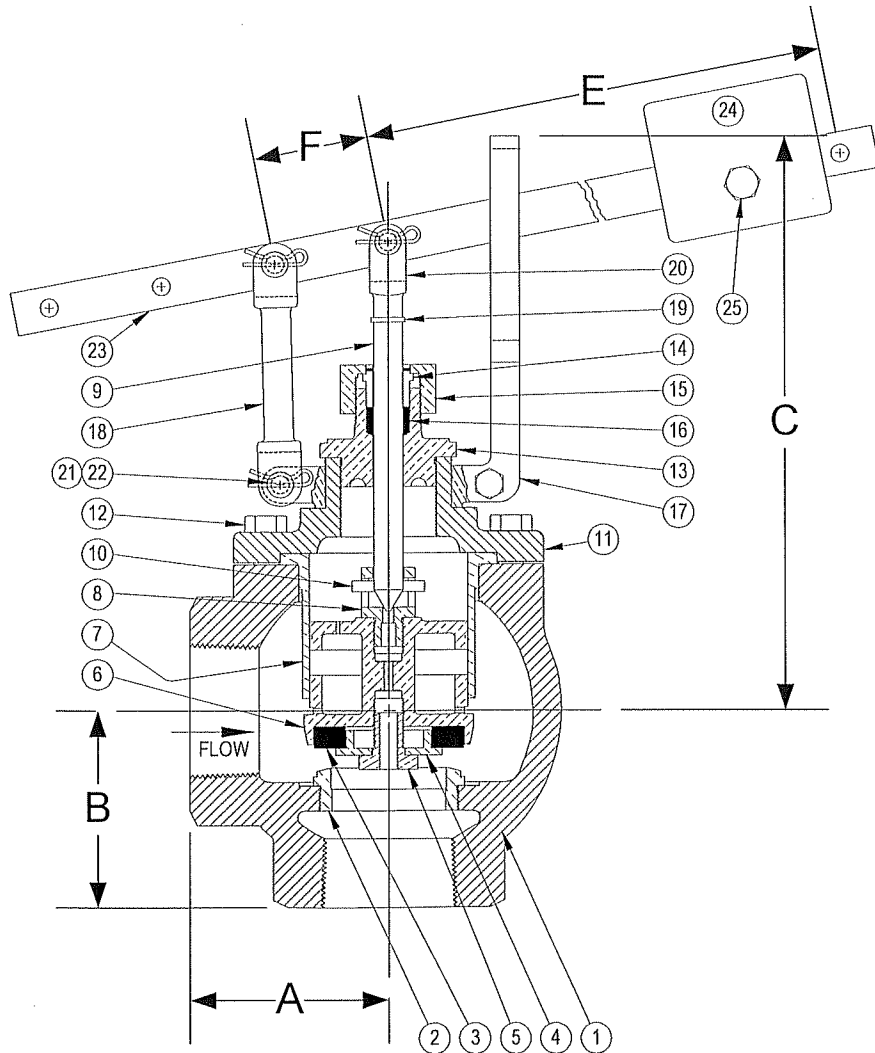


DRAWING NO.




PARTS LIST

Item	Description	Material
1	BODY	CAST IRON (ASTM A 126, CLASS B)
*2	SEAT BUSHING	BRONZE (ASTM B 62, C83600)
*13	VALVE DISC	NITRILE
4	DISC PLATE	BRONZE (ASTM B 62, C83600)
5	DISC PLATE SCREW	BRASS
6	INNER VALVE	BRONZE (ASTM B 62, C83600)
7	CYLINDER	BRONZE (ASTM B 62, C83600)
*8	PORT STUD	BRONZE (ASTM B 62, C83600)
*9	VALVE STEM	STAINLESS STEEL
*10	ROLL PIN	STAINLESS STEEL
11	TOP CAP	CAST IRON (ASTM A 126, CLASS B)
12	CAP SCREW(S)	STEEL
13	PACKING BOX (BONNET)	BRONZE (ASTM B 62, C83600)
14	PACKING GLAND	BRONZE (ASTM B 62, C83600)
15	PACKING NUT	BRONZE (ASTM B 62, C83600)
*16	PACKING	TEFLON
17	GUIDE YOKE	BRONZE (ASTM B 62, C83600)
18	GUIDE ARM	BRONZE (ASTM B 62, C83600)
19	CLEVIS LOCKWASHER	STEEL
20	STEM CLEVIS	BRONZE (ASTM B 62, C83600)
21	PIVOT PIN(S)	STEEL
22	PIVOT PIN RETAINER(S)	STEEL
23	LEVER	STEEL
24	WEIGHT	STAINLESS STEEL (304)
25	SET SCREW	STEEL

\*Denotes parts included in the rebuild kit.

†Suitable for temperatures up to 125°F.

Size	DIMENSIONS						WEIGHT (lbs)
	A (in)	B (in)	C (in)	E (in)	F (in)	Max Inlet (PSI)	
2	3-7/16	3-7/16	10-1/16	14-3/4	2	50	30

		DRAWING NO.
		3400 CLEVELAND SKOKIE ILLINOIS
DIMENSIONAL ASSEMBLY		PART NO.
250Lb. Threaded Type 73 Angle		SCALE: NTS
Lever Valve		DATE: 09/01/2011
MAT'L: Iron Body / Bronze Trim	REQ. ---	DR. BY DSF