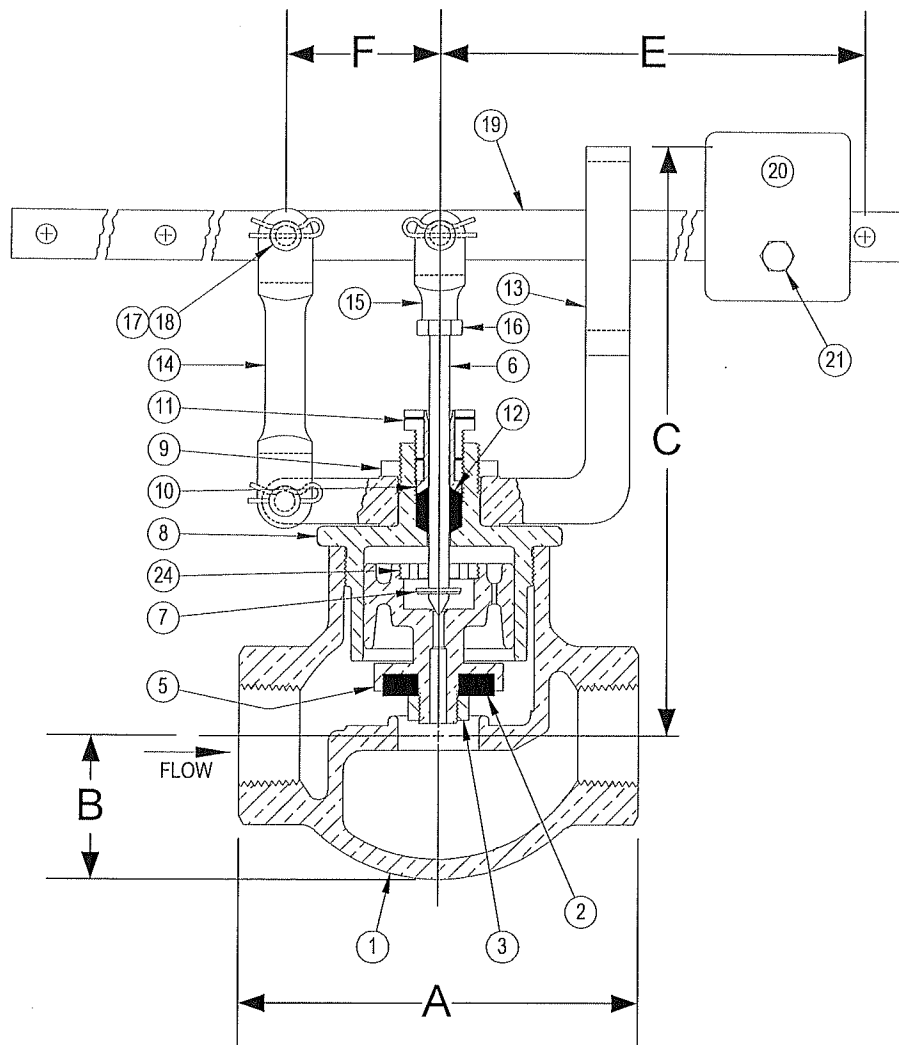


DRAWING NO.



PARTS LIST

Item	Description	Material
1	BODY	CAST IRON (ASTM A 126, CLASS B)
*†2	VALVE DISC	NITRILE
3	DISC NUT	BRASS
4		
5	INNER VALVE	CAST IRON (ASTM A 126, CLASS B)
*6	VALVE STEM	STAINLESS STEEL
*7	STEM SNAP RING	STAINLESS STEEL
8	BONNET (PACKING BOX)	BRONZE (ASTM B 62, C83600)
9	YOKE LOCKNUT	BRONZE (ASTM B 62, C83600)
10	PACKING GLAND	BRASS
11	PACKING NUT	BRASS
*12	PACKING	TEFLON
13	GUIDE YOKE	BRONZE (ASTM B 62, C83600)
14	GUIDE ARM	BRONZE (ASTM B 62, C83600)
15	STEM CLEVIS	BRONZE (ASTM B 62, C83600)
16	CLEVIS LOCKNUT	BRONZE (ASTM B 62, C83600)
17	PIVOT PINS	STEEL
18	PIVOT PIN RETAINERS	STEEL
19	LEVER	STEEL
20	WEIGHT	STEEL
21	SET SCREW	STEEL
22		
23		
24	LIFT NUT	BRASS

*Denotes parts included in the rebuild kit.

†Suitable for temperatures up to 125°F.

Size	DIMENSIONS						WEIGHT (lbs)
	A (in)	B (in)	C (in)	E (in)	F (in)	Max Inlet (PSI)	
1/2	4-1/4	1-1/2	7	11-5/16	1-15/16	130	10
3/4	4-1/4	1-1/2	7	11-5/16	1-15/16	130	10
1	5	1-13/16	7-3/8	11-5/16	1-15/16	100	12
1-1/4	5-1/8	1-7/8	7-5/8	11-5/16	1-15/16	80	13
1-1/2	5-1/4	2-1/16	7-13/16	11-5/16	1-15/16	65	14

3400 CLEVELAND SKOKIE ILLINOIS

DRAWING NO.

DIMENSIONAL ASSEMBLY

PART NO.

250Lb. Threaded Type 73 Globe

SCALE: NTS

Lever Valve

DATE: 09/01/2011

MAT'L: Iron Body / Iron Trim

REQ. ---

DR. BY DSF