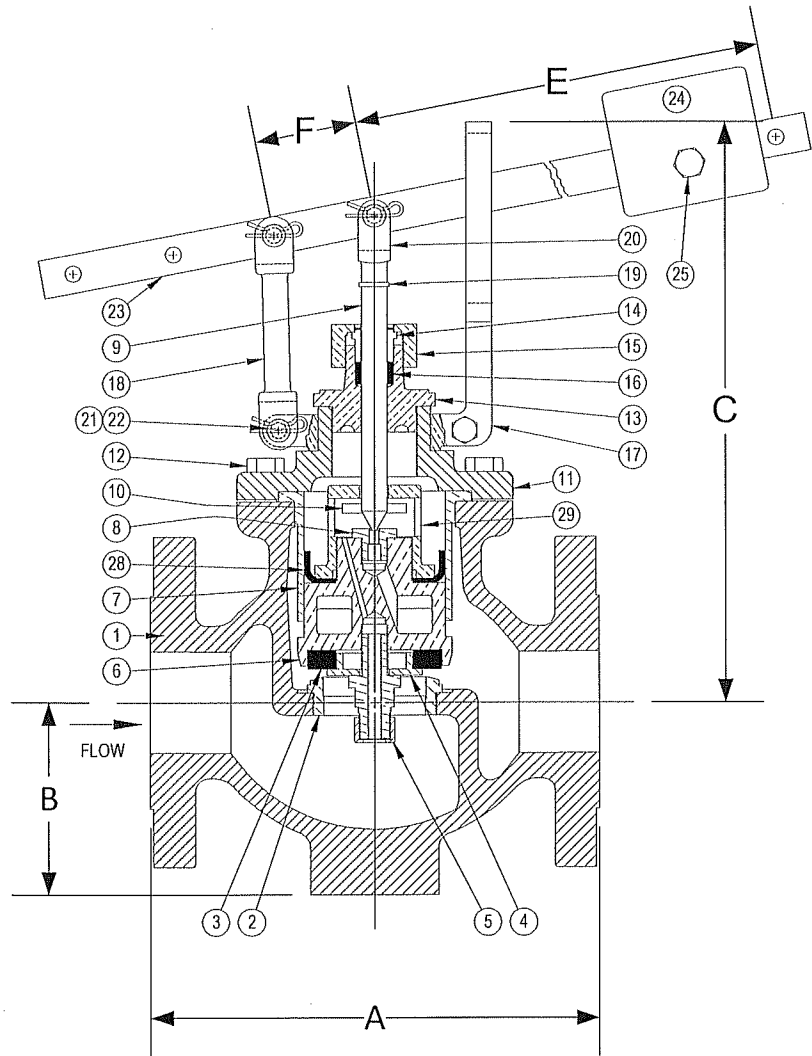


DRAWING NO.




PARTS LIST

Item	Description	Material
1	BODY	CAST IRON (ASTM A 126, CLASS B)
*2	SEAT BUSHING	BRONZE (ASTM B 62, C83600)
*13	VALVE DISC	NITRILE
4	DISC PLATE	BRONZE
5	DISC PLATE SCREW & STRAINER ASS'Y	BRASS
6	INNER VALVE	BRONZE (ASTM B 62, C83600)
7	CYLINDER	BRONZE (ASTM B 62, C83600)
*8	PORT STUD	BRONZE (ASTM B 62, C83600)
*9	VALVE STEM	STAINLESS STEEL
*10	ROLL PIN	STAINLESS STEEL
11	TOP CAP	CAST IRON (ASTM A 126, CLASS B)
12	CAP SCREW(S)	STEEL
13	PACKING BOX (BONNET)	BRONZE (ASTM B 62, C83600)
14	PACKING GLAND	BRONZE (ASTM B 62, C83600)
15	PACKING NUT	BRONZE (ASTM B 62, C83600)
*16	PACKING	TEFLON
17	GUIDE YOKE	BRONZE (ASTM B 62, C83600)
18	GUIDE ARM	BRONZE (ASTM B 62, C83600)
19	CLEVIS LOCKWASHER	STEEL
20	STEM CLEVIS	BRONZE (ASTM B 62, C83600)
21	PIVOT PIN(S)	STEEL
22	PIVOT PIN RETAINER(S)	STEEL
23	LEVER	STEEL
24	WEIGHT	STEEL
25	SET SCREW	STEEL
*28	LEATHER CUP	LEATHER
29	LEATHER CUP LOCK NUT	BRONZE

\*Denotes parts included in the rebuild kit.

†Suitable for temperatures up to 125°F. For temperature ranges above 125°F, contact Keckley.

Size	DIMENSIONS						WEIGHT (lbs)
	A (in)	B (in)	C (in)	E (in)	F (in)	Max Inlet (PSI)	
2	8-3/4	3	11-1/4	14-3/4	2	250	56
2-1/2	10-1/8	3-3/8	12	14-3/4	2	250	72
3	11-1/4	4	13-1/4	14-3/4	2	250	110
4	12-7/8	4-3/4	14-5/16	14-3/4	2	250	140
5	15-3/8	5-15/16	14-1/4	18-1/2	2-1/2	250	195
6	17-1/8	6-15/16	18-5/16	18-1/2	2-1/2	250	240
8	20-1/8	8-1/4	20-3/4	21	3	250	445

 3400 CLEVELAND SKOKIE ILLINOIS	DRAWING NO.
	PART NO.
DIMENSIONAL ASSEMBLY	SCALE: NTS
250Lb. Flange Type 773 Globe	DATE: 09/01/2011
Lever Valve	DR. BY DSF
MAT'L: Iron Body / Bronze Trim	REQ. ---