

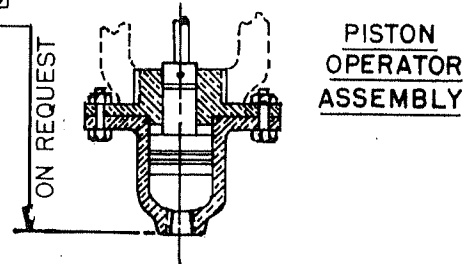
\* BOTTOM CAP 4" & LARGER  
 ▼ DENOTES USED ON 2-1/2", 4" TO 8"  
 ▲ DENOTES NOT USED ON 1/2" TO 1-1/2"  
 \* DENOTES RECOMMENDED SPARE PARTS.....

\*\*SEATS INTEGRAL WITH BODY, RE-NEWABLE SEATS AVAILABLE AT EXTRA COST IN BRS. OR S.STL.

DIAMETER OF THE DIAPHRAGM ASSEMBLY OR PISTON OPERATOR ASSEMBLY IS DETERMINED BY THE CONTROLLED PRESSURE REQUIREMENTS.....

DIAPHRAGM ASSEMBLIES ARE AVAILABLE IN THE FOLLOWING DIAMETERS: 6", 7", 8", 10", 13"

PISTON OPERATOR ASSEMBLIES ARE AVAILABLE IN THE FOLLOWING DIAMETERS: 2", 2-1/2", 3", AND 4-1/4".....



PISTON OPERATOR ASSEMBLY

NO.	NAME	QU.	MAT'L	QU.	MAT'L
			1/2"-1-1/2"		2" & UP
28	SPRING	*	STL.		STL.
27	SPRING SEAT		C.I.		C.I.
26	ADJUSTING NUT		C.I.		C.I.
25	YOKE		C.I.		C.I.
24	STEM: UPPER		STL.		STL.
23	BUSHING NUT		BRS.		BRS.
22	DIAP.CHAMBER BOLTS	AR	STL.	AR	STL.
21	DIAP.CHAMBER NUTS	AR	STL.	AR	STL.
20	BOTTOM DIAP.CHAMBER		C.I.		C.I.
19	TOP DIAP.CHAMBER		C.I.		C.I.
18	ROLL PIN		S.STL.		S.STL.
17	LOWER DIAP. PLATE		BRZ.		BRZ.
16	DIAPHRAGM	*	NEOP.		NEOP.
15	STEM HEX NUT		STL.		STL.
14	STEM: LOWER	*	S.STL.		S.STL.
13	PACKING NUT		BRS.		BRS.
12	PACKING	* AR	TFL.	AR	TFL.
11	PACKING GLAND		BRS.		BRS.
10	BONNET		BRZ.		BRZ.
9	TOP CAP	▲			C.I.
8	HEX CAP SCREWS	▲	AR		STL.
7	GASKETS	*	▲		NON ASB.
6	BOTTOM CAP	▲			C.I.*
5	ROLL PIN	*	S.STL.		S.STL.
4	MAIN VALVE	*	BRZ.		BRZ.
3	SEAT; SMALL	*	**		BRZ.
2	SEAT; LARGE	*	**		BRZ.
1	BODY		BRZ.		C.I.

DIMENSIONS								
SIZE	A			B	C			
	SCR'D	125 #	250 #		6" DIAPH.	7" DIAPH.	8"-10" DIAPH.	13" DIAPH.
1/2-1	4-11/16	—	—	2-3/8	21-1/16	20	20-1/4	20-7/16
1/4, 1/2	5-7/16	—	—	3-1/16	22	21	21-3/16	21-3/8
2	6-1/2	6-1/2	7	2-7/8	25-1/8	24-1/16	24-5/16	24-1/2
2-1/2	7-7/8	8-3/16	8-13/16	4-5/16	25-5/8	24-9/16	24-13/16	25
3	9-1/4	9-1/4	10	4-3/8	26-5/8	25-9/16	25-13/16	26
4	—	10-3/4	11-3/8	5-5/16	26-7/8	25-13/16	26-1/16	26-1/4
5	—	12	12-7/8	6-3/16	27-3/4	26-11/16	26-15/16	27-1/8
6	—	13	13-7/8	7-5/8	28-13/16	27-3/4	28	28-3/16
8	—	16-3/4	17-3/4	8-5/8	30-1/8	29-1/16	29-5/16	29-1/2
10	—	20-1/4	21-5/8	9-3/16	32-7/16	31-3/8	31-5/8	31-13/16
12	—	22-5/8	24-1/8	11-3/8	34	32-7/8	33-1/8	33-5/16

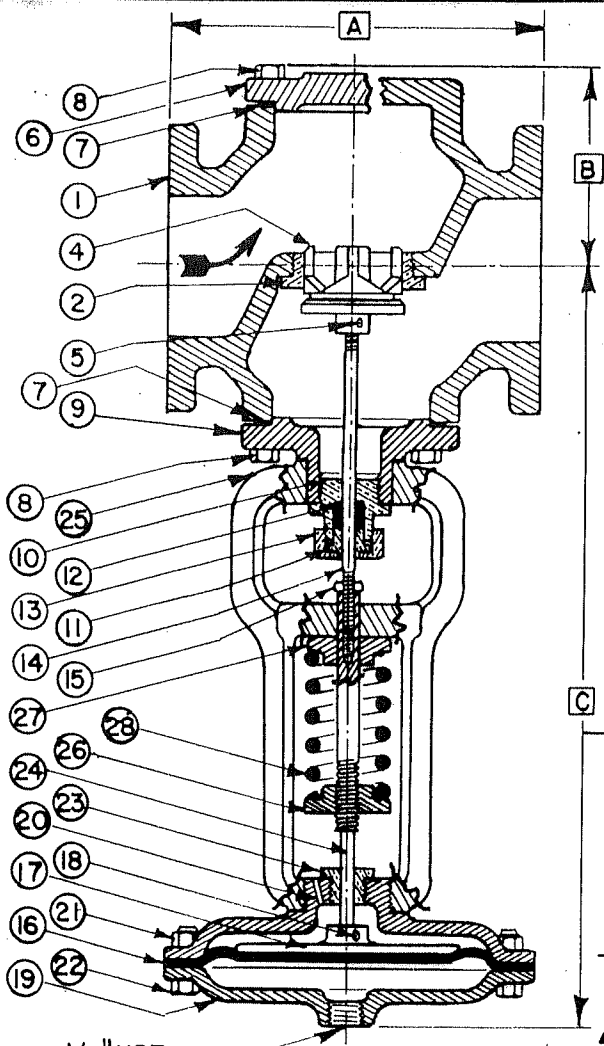
PARTS LIST

**O.C. KECKLEY CO.**  
 SKOKIE, ILL.

**DIMENSIONAL ASSEMBLY 8**  
**PARTS**

**1/2" - 12" # 114 REGULATOR**

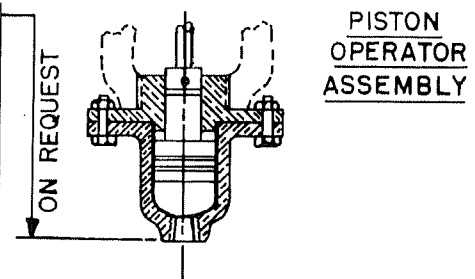
DRAWING NO. **21951 A**  
 PART NO. \_\_\_\_\_  
 REV. 5-17-94  
 SCALE NONE  
 DATE 11-25-68  
 DR. BY *J. Moore*



DIAMETER OF THE DIAPHRAGM ASSEMBLY OR PISTON OPERATOR ASSEMBLY IS DETERMINED BY THE CONTROLLED PRESSURE REQUIREMENTS.....

DIAPHRAGM ASSEMBLIES ARE AVAILABLE IN THE FOLLOWING DIAMETERS: 6", 7", 8", 10", 13"

PISTON OPERATOR ASSEMBLIES ARE AVAILABLE IN THE FOLLOWING DIAMETERS: 2", 2-1/2", 3", AND 4-1/4".....



Δ DENOTES NOT USED ON 1/2" TO 1-1/2".....  
 \* BOTTOM CAP 4" & LARGER.....  
 \* DENOTES RECOMMENDED SPARE PARTS.....  
 \*\* SEATS INTEGRAL WITH BODY, RENEWABLE SEATS AVAILABLE AT EXTRA COST IN BRS. OR S.STL. ....

DIMENSIONS					
SIZE	A			B	C MAX.
	SCR'D	125#	250#		
1/2-1	4-1/4	-	-	1-3/4	20-3/16
1-1/4	5-3/4	-	-	3-1/8	21-3/8
1-1/2	5-3/4	-	-	3-1/8	21-3/8
2	6-1/2	6-1/2	7	3	24-1/2
2-1/2	7-7/8	8-3/16	8-13/16	4-5/8	25
3	9-1/4	9-1/4	10	4-3/8	26
4	-	10-3/4	11-3/8	5-3/4	26-1/4
5	-	12-7/8	13-3/4	7-3/4	28-3/16
6	-	13	13-7/8	7-3/4	28-3/16
8	-	16-3/4	17-3/4	9-5/16	29-5/8

NO.	NAME	QU.	MAT'L	QU.	MAT'L
		1/2"-1-1/2"		2" & UP	
28	SPRING	*	STL.	1	STL.
27	SPRING SEAT	1	C.I.	1	C.I.
26	ADJUSTING NUT	1	C.I.	1	C.I.
25	YOKE	1	C.I.	1	C.I.
24	STEM: UPPER	1	STL.	1	STL.
23	BUSHING NUT	1	BRS.	1	BRS.
22	DIAP.CHAMBER BOLTS	AR	STL.	AR	STL.
21	DIAP.CHAMBER NUTS	AR	STL.	AR	STL.
20	BOTTOM DIAP.CHAMBER	1	C.I.	1	C.I.
19	TOP DIAP.CHAMBER	1	C.I.	1	C.I.
18	ROLL PIN	1	S.STL.	1	S.STL.
17	LOWER DIAP. PLATE	1	BRZ	1	BRZ
16	DIAPHRAGM	*	NEOP.	1	NEOP.
15	STEM HEX NUT	1	STL.	1	STL.
14	STEM: LOWER	*	S.STL.	1	S.STL.
13	PACKING NUT	1	BRS.	1	BRS.
12	PACKING	* AR	TFL.	AR	TFL.
11	PACKING GLAND	1	BRS.	1	BRS.
10	BONNET	1	BRZ.	1	BRZ.
9	TOP CAP	Δ		1	C.I.
8	HEX CAP SCREWS	Δ		AR	STL.
7	GASKETS	*	Δ	1	COMP.
6	BOTTOM CAP	Δ		1	C.I.*
5	ROLL PIN	* 1	S.STL.	1	S.STL.
4	MAIN VALVE	* 1	BRZ.	1	BRZ.
2	SEAT	*	C*	1	BRZ.
1	BODY	1	BRZ.	1	C.I.

## O. C. KECKLEY COMPANY

**SKOKIE ILLINOIS**

**DIMENSIONAL ASSEMBLY & PARTS**

**1/2"-8" #119 REGULATOR**

DRAWING NO.  
**21952-A**

PART NO.  
—

SCALE —

DATE **11-25-68**

DR. BY *J. Mead*