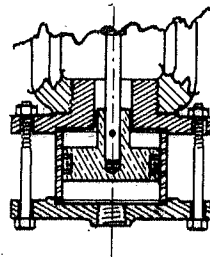


DIAMETER OF THE DIAPHRAGM ASSEMBLY OR PISTON OPERATOR ASSEMBLY IS DETERMINED BY THE CONTROLLED PRESSURE REQUIREMENTS.....

DIAPHRAGM ASSEMBLIES ARE AVAILABLE IN THE FOLLOWING DIAMETERS: 6", 7", 8", 10", 13"

PISTON OPERATOR ASSEMBLIES ARE AVAILABLE IN THE FOLLOWING DIAMETERS: 2", 2-1/2", 3", AND 4-1/4".....



PISTON OPERATOR ASSEMBLY

□ DENOTES USED ON 5" TO 8" ONLY.....

△ DENOTES NOT USED ON 1/2" TO 1 1/2".....

* DENOTES RECOMMENDED SPARE PARTS.....

** SEATS INTEGRAL WITH BODY, RENEWABLE SEATS AVAILABLE AT EXTRA COST IN BRS. OR S.STL.

DIMENSIONS					
SIZE	A			B	C
	SCR'D	125 #	250 #		
1/2-1	4-11/16	—	—	3-1/4	22-5/8
1-1/4, 1 1/2	5-3/4	—	—	3-13/16	24-1/16
2	6-1/2	6-1/2	7	3-5/8	27-7/8
2-1/2	7-7/8	8-3/16	8-13/16	4-5/16	29-3/8
3	9-1/4	9-1/4	10	5-1/8	31-3/4
4	—	10-3/4	11-3/8	5-5/16	31-7/8
5	—	12	12-7/8	6-3/16	34-5/8
6	—	13	13-7/8	7-1/8	35-1/2
8	—	16-3/4	17-3/4	8-5/8	37-1/2
10	—	20-1/4	21-5/8	10-3/4	30-3/4
12	—	22-5/8	24-1/8	12-1/2	32-3/4

REVISIONS		
NO	DATE	DESCRIPTION
2	10-6-87	#17 WAS C.I.
3	2-3-89	WAS COMP. ASB. <i>See</i>

NO.	NAME	QU.	MAT'L	QU.	MAT'L
		1/2"-1 1/2"		2" & UP	
34	ROLL PIN	□*	△		S.STL.
33	ANTI-TURBINING PIN	□*	△		S.STL.
28	SPRING	*		STL.	STL.
27	SPRING SEAT		C.I.		C.I.
26	ADJUSTING NUT		C.I.		C.I.
25	YOKE		C.I.		C.I.
24	STEM: UPPER		STL.		STL.
23	BUSHING NUT		BRS.		BRS.
22	DIAP.CHAMBER BOLTS	AR	STL.	AR	STL.
21	DIAP.CHAMBER NUTS	AR	STL.	AR	STL.
20	BOTTOM DIAP.CHAMBER		C.I.		C.I.
19	TOP DIAP.CHAMBER		C.I.		C.I.
18	ROLL PIN		S.STL.		S.STL.
17	LOWER DIAP. PLATE		BRZ		BRZ
16	DIAPHRAGM	*	NEOP.		NEOP.
15	STEM HEX NUT		STL.		STL.
14	STEM: LOWER	*	S.STL.		S.STL.
13	PACKING NUT		BRS.		BRS.
12	PACKING	* AR	TFL.	AR	TFL.
11	PACKING GLAND		BRS.		BRS.
10	BONNET		BRZ.		BRZ.
9	TOP CAP	△		C.I.	
8	HEX CAP SCREWS	△	AR	STL.	
7	GASKETS	* △		NON ASB.	
6	BOTTOM CAP		BRZ.		C.I.
5	ROLL PIN	*	S.STL.		S.STL.
4	MAIN VALVE	*	BRZ.		BRZ.
3	SEAT; SMALL	* **		BRZ.	
2	SEAT; LARGE	* **		BRZ.	
1	BODY		BRZ.		C.I.

PARTS LIST

O. C. KECKLEY COMPANY
 SKOKIE ILLINOIS
 DIMENSIONAL ASSEMBLY & PARTS
 1/2" - 12" #114-R REGULATOR

DRAWING NO.
24173 A

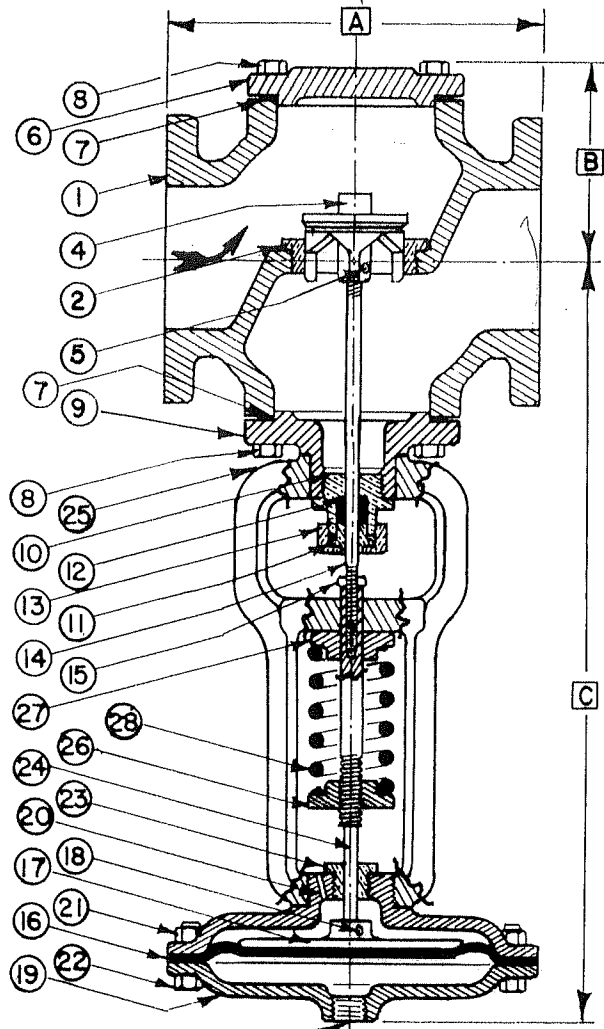
PART NO.

SCALE —
 DATE 11-25-68

MAT'L —

REQ. —

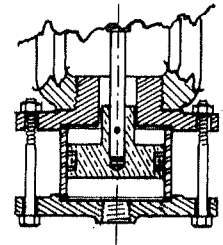
DR. BY *Mowbr*



DIAMETER OF THE DIAPHRAGM ASSEMBLY OR PISTON OPERATOR ASSEMBLY IS DETERMINED BY THE CONTROLLED PRESSURE REQUIREMENTS.....

DIAPHRAGM ASSEMBLIES ARE AVAILABLE IN THE FOLLOWING DIAMETERS: 6", 7", 8", 10", 13" & 16"...

PISTON OPERATOR ASSEMBLIES ARE AVAILABLE IN THE FOLLOWING DIAMETERS: 2", 2-1/2", 3", AND 4-1/4".....



PISTON OPERATOR ASSEMBLY

1/4" NPT

DIMENSIONS					
SIZE	A			B	C
	SCR'D	125#	250#		
1/2-1	4-1/4	—	—	2-3/8	22-5/8
1-1/4	5-3/4	—	—	2-3/4	24-1/16
1-1/2	5-3/4	—	—	2-3/4	24-1/16
2	6-1/2	6-1/2	7	3-5/8	27-7/8
2-1/2	7-7/8	8-3/16	8-13/16	4-5/16	29-3/8
3	9-1/4	9-1/4	10	5-1/8	31-3/4
4	—	10-3/4	11-3/8	5-5/16	31-7/8
5	—	12-7/8	13-3/4	7-1/8	35-1/2
6	—	13	13-7/8	7-1/8	35-1/2
8	—	16-3/4	17-3/4	8-5/8	37-1/2

A DENOTES NOT USED ON 1/2" TO 1 1/2".....
 * DENOTES RECOMMENDED SPARE PARTS.....
 ** SEATS INTEGRAL WITH BODY, RENEWABLE SEATS AVAILABLE AT EXTRA COST IN BRS. OR S.STL.

REVISIONS		
NO	DATE	DESCRIPTION
1	1-20-89	WAS COMP. ASB. <i>leg</i>
2	7-22-91	1/4-1/2 FF WAS 4 3/4" <i>leg</i>

NO.	NAME	QU.	MAT'L	QU.	MAT'L
			1/2"-1-1/2"		2" & UP
28	SPRING	*	STL.	1	STL.
27	SPRING SEAT	1	C.I.	1	C.I.
26	ADJUSTING NUT	1	C.I.	1	C.I.
25	YOKE	1	C.I.	1	C.I.
24	STEM: UPPER	1	STL.	1	STL.
23	BUSHING NUT	1	BRS.	1	BRS.
22	DIAP. CHAMBER BOLTS	AR	STL.	AR	STL.
21	DIAP. CHAMBER NUTS	AR	STL.	AR	STL.
20	BOTTOM DIAP. CHAMBER	1	C.I.	1	C.I.
19	TOP DIAP. CHAMBER	1	C.I.	1	C.I.
18	ROLL PIN	1	S.STL.	1	S.STL.
17	LOWER DIAP. PLATE	1	C.I.	1	C.I.
16	DIAPHRAGM	*	NEOP.	1	NEOP.
15	STEM HEX NUT	1	STL.	1	STL.
14	STEM: LOWER	*	S.STL.	1	S.STL.
13	PACKING NUT	1	BRS.	1	BRS.
12	PACKING	* AR	TFL.	AR	TFL.
11	PACKING GLAND	1	BRS.	1	BRS.
10	BONNET	1	BRZ.	1	BRZ.
9	TOP CAP	1	Δ	1	C.I.
8	HEX CAP SCREWS	1	Δ	AR	STL.
7	GASKETS	*	Δ	1	Non-ASB.
6	BOTTOM CAP	1	BRZ.	1	C.I.
5	ROLL PIN	*	S.STL.	1	S.STL.
4	MAIN VALVE	*	BRZ.	1	BRZ.
2	SEAT	*	C*	1	BRZ.
1	BODY	1	BRZ.	1	C.I.

PARTS LIST

<h1>O. C. KECKLEY COMPANY</h1> <p>SKOKIE ILLINOIS</p> <p>DIMENSIONAL ASSEMBLY & PARTS</p> <p>1/2"-8" #119-R REGULATOR</p>	DRAWING NO.	AL 67052
	PART NO.	—
	SCALE	—
MAT'L	REQ.	DR. BY <i>Morok</i>

DATE 11-25-68