

THE DIAMETER OF THE DIA-
PHRAGM ASSEMBLY IS DETER-
MINED BY THE CONTROLLED
PRESSURE REQUIREMENTS....

DIAPHRAGM ASSEMBLIES ARE
AVAILABLE IN THE FOLLOWING
DIAMETERS: 6", 7", 8", 10", 13", & 16"....

□ DENOTES USED ON 5" TO 8" ONLY....

△ DENOTES NOT USED ON 1/2" TO 1-1/2"....

* DENOTES RECOMMENDED SPARE
PARTS.....

**SEATS INTEGRAL WITH BODY, RENEW-
ABLE SEATS AVAILABLE AT EX-
TRA COST IN BRS. ORS. STL.

| DIMENSIONS | | | | | |
|------------|---------|--------|---------|---------|---------|
| SIZE | A | | | B | C |
| | SCR'D | 125 # | 250 # | | |
| 1/2-1 | 4-11/16 | — | — | 3-1/4 | 17-3/4 |
| 1-1/4, 1/2 | 5-7/16 | — | — | 3-13/16 | 18-3/4 |
| 2 | 6-1/2 | 6-1/2 | 7 | 3-5/8 | 19 |
| 2-1/2 | 7-7/8 | 8-3/16 | 8-13/16 | 4-5/16 | 19-5/8 |
| 3 | 9-1/4 | 9-1/4 | 10 | 5-1/8 | 20-3/8 |
| 4 | — | 10-3/4 | 11-3/8 | 5-5/16 | 20-9/16 |
| 5 | — | 12 | 12-7/8 | 6-3/16 | 21-7/16 |
| 6 | — | 13 | 13-7/8 | 7-1/8 | 22-3/8 |
| 8 | — | 16-3/4 | 17-3/4 | 8-5/8 | 23-7/8 |
| 10 | — | 20-1/4 | 21-5/8 | 10-3/4 | 26-3/16 |
| 12 | — | 22-5/8 | 24-1/8 | 12-1/2 | 28-3/16 |

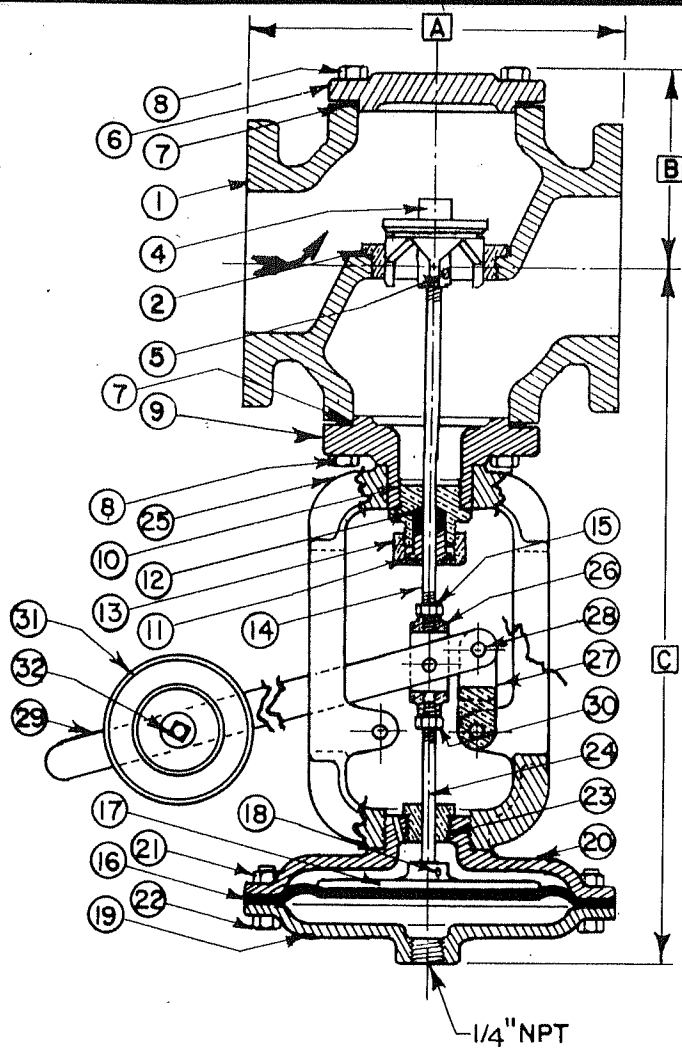
| NO | NAME | QU. | MATL. | QU. | MATL. | |
|----|---------------------|-------------|-------|---------|---------|--------|
| | | 1/2"-1 1/2" | | 2" & UP | | |
| 34 | ROLL PIN | □* | △ | 1 | S.STL. | |
| 33 | ANTI-TURBINING PIN | □* | △ | 1 | S.STL. | |
| 32 | WEIGHT SCREW | | 1 | STL. | 1 | STL. |
| 31 | WEIGHT | | 1 | C.I. | 1 | C.I. |
| 30 | UPPER STEM HEX NUT | | 1 | STL. | 1 | STL. |
| 29 | LEVER | | 1 | STL. | 1 | STL. |
| 28 | ROLL PINS | | 3 | S.STL. | 3 | S.STL. |
| 27 | LINK | | 1 | BRZ. | 1 | BRZ. |
| 26 | CLEVIS | | 1 | BRZ. | 1 | BRZ. |
| 25 | YOKE | | 1 | C.I. | 1 | C.I. |
| 24 | STEM: UPPER | | 1 | STL. | 1 | STL. |
| 23 | BUSHING NUT | | 1 | BRS. | 1 | BRS. |
| 22 | DIAP.CHAMBER BOLTS | AR | STL. | AR | STL. | |
| 21 | DIAP.CHAMBER NUTS | AR | STL. | AR | STL. | |
| 20 | BOTTOM DIAP.CHAMBER | | 1 | C.I. | 1 | C.I. |
| 19 | TOP DIAP. CHAMBER | | 1 | C.I. | 1 | C.I. |
| 18 | ROLL PIN | | 1 | S.STL. | 1 | S.STL. |
| 17 | LOWER DIAP. PLATE | | 1 | C.I. | 1 | C.I. |
| 16 | DIAPHRAGM | * | 1 | NEOP. | 1 | NEOP. |
| 15 | LOWER STEM HEX NUT | | 1 | STL. | 1 | STL. |
| 14 | STEM: LOWER | * | 1 | S.STL. | 1 | S.STL. |
| 13 | PACKING NUT | | 1 | BRS. | 1 | BRS. |
| 12 | PACKING | *AR | TFL. | AR | TFL. | |
| 11 | PACKING GLAND | | 1 | BRS. | 1 | BRS. |
| 10 | BONNET | | 1 | BRZ. | 1 | BRZ. |
| 9 | TOP CAP | | △ | 1 | C.I. | |
| 8 | HEX HEAD CAP SCREW | | △ | AR | STL. | |
| 7 | GASKETS | * | △ | 2 | NON-ASB | |
| 6 | BOTTOM CAP | | 1 | BRZ. | 1 | C.I. |
| 5 | ROLL PIN | * | 1 | S.STL. | 1 | S.STL. |
| 4 | MAIN VALVE | * | 1 | BRZ. | 1 | BRZ. |
| 3 | SEAT, SMALL | * | ** | 1 | BRZ. | |
| 2 | SEAT, LARGE | * | ** | 1 | BRZ. | |
| 1 | BODY | | 1 | BRZ. | 1 | C.I. |
| NO | NAME | QU. | MATL. | QU. | MATL. | |
| | | 1/2"-1 1/2" | | 2" & UP | | |

PARTS LIST

| REVISIONS | | |
|-----------|---------|------------------------|
| NO | DATE | DESCRIPTION |
| 1 | 2-20-89 | WAS GD.ASB & COMP.ASB. |

O. C. KECKLEY COMPANY
 SKOKIE ILLINOIS
 DIMENSIONAL ASSEMBLY & PARTS
 1/2"-12" #116-R REGULATOR

| |
|--------------------------------|
| DRAWING NO. AL 67051 |
| PART NO. — |
| SCALE — |
| DATE 11-28-68 |
| DR. BY <i>Moore</i> |



THE DIAMETER OF THE DIAPHRAGM ASSEMBLY IS DETERMINED BY THE CONTROLLED PRESSURE REQUIREMENTS.....

DIAPHRAGM ASSEMBLIES ARE AVAILABLE IN THE FOLLOWING DIAMETERS: 6", 7", 8", 10", 13", & 16".....

△ DENOTES NOT USED ON 1/2" to 1-1/2"....
 * DENOTES RECOMMENDED SPARE PARTS.....
 **SEATS INTEGRAL WITH BODY, RENEWABLE SEATS AVAILABLE AT EXTRA COST IN BRS. ORS. STL.....

| DIMENSIONS | | | | | |
|------------|-------|--------|---------|--------|---------|
| SIZE | A | | | B | C |
| | SCR'D | 125# | 250# | | |
| 1/2-1 | 3-3/4 | — | — | 2-3/8 | 17-3/4 |
| 1-1/4 | 4-3/4 | — | — | 2-3/4 | 18-3/4 |
| 1-1/2 | 4-3/4 | — | — | 2-3/4 | 18-3/4 |
| 2 | 6-1/2 | 6-1/2 | 7 | 3-5/8 | 19 |
| 2-1/2 | 7-7/8 | 8-3/16 | 8-13/16 | 4-5/16 | 19-5/8 |
| 3 | 9-1/4 | 9-1/4 | 10 | 5-1/8 | 20-3/8 |
| 4 | — | 10-3/4 | 11-3/8 | 5-5/16 | 20-9/16 |
| 5 | — | 12-7/8 | 13-3/4 | 7-1/8 | 22-3/8 |
| 6 | — | 13 | 13-7/8 | 7-1/8 | 22-3/8 |
| 8 | — | 16-3/4 | 17-3/4 | 8-5/8 | 23-7/8 |

| NO | NAME | QU. | MATL. | QU. | MATL. |
|----|----------------------|-------------|----------|---------|----------|
| | | 1/2"-1 1/2" | | 2" & UP | |
| 32 | WEIGHT SCREW | 1 | STL. | 1 | STL. |
| 31 | WEIGHT | 1 | C.I. | 1 | C.I. |
| 30 | UPPER STEM HEX NUT | 1 | STL. | 1 | STL. |
| 29 | LEVER | 1 | STL. | 1 | STL. |
| 28 | ROLL PINS | 3 | S.STL. | 3 | S.S.T.L. |
| 27 | LINK | 1 | BRZ. | 1 | BRZ. |
| 26 | CLEVIS | 1 | BRZ. | 1 | BRZ. |
| 25 | YOKE | 1 | C.I. | 1 | C.I. |
| 24 | STEM: UPPER | 1 | STL. | 1 | STL. |
| 23 | BUSHING NUT | 1 | BRS. | 1 | BRS. |
| 22 | DIAP.CHAMBER BOLTS | AR | STL. | AR | STL. |
| 21 | DIAP.CHAMBER NUTS | AR | STL. | AR | STL. |
| 20 | BOTTOM DIAP. CHAMBER | 1 | C.I. | 1 | C.I. |
| 19 | TOP DIAP. CHAMBER | 1 | C.I. | 1 | C.I. |
| 18 | ROLL PIN | 1 | S.S.T.L. | 1 | S.S.T.L. |
| 17 | LOWER DIAP. PLATE | 1 | C.I. | 1 | C.I. |
| 16 | DIAPHRAGM | * | NEOP. | 1 | NEOP. |
| 15 | LOWER STEM HEX NUT | 1 | STL. | 1 | STL. |
| 14 | STEM: LOWER | * | S.STL. | 1 | S.S.T.L. |
| 13 | PACKING NUT | 1 | BRS. | 1 | BRS. |
| 12 | PACKING | *AR | TFL | AR | TFL |
| 11 | PACKING GLAND | 1 | BRS. | 1 | BRS. |
| 10 | BONNET | 1 | BRZ. | 1 | BRZ. |
| 9 | TOP CAP | △ | 1 | C.I. | |
| 8 | HEX HEAD CAP SCREW | △ | AR | STL. | |
| 7 | GASKETS | * | △ | 2 | NON ASE |
| 6 | BOTTOM CAP | 1 | BRZ. | 1 | C.I. |
| 5 | ROLL PIN | * | S.S.T.L. | 1 | S.S.T.L. |
| 4 | MAIN VALVE | * | BRZ. | 1 | BRZ. |
| 2 | SEAT | * | ** | 1 | BRZ. |
| 1 | BODY | 1 | BRZ. | 1 | C.I. |

PARTS LIST

| REVISIONS | | |
|-----------|---------|--------------------|
| NO | DATE | DESCRIPTION |
| 1 | 2-14-89 | WAS COMP. ASSEMBLY |

| | | |
|---|-------------|----------------------|
| O. C. KECKLEY COMPANY SKOKIE ILLINOIS DIMENSIONAL ASSEMBLY & PARTS 1/2"-8" #118-R REGULATOR | DRAWING NO. | 20362 A |
| | PART NO. | — |
| | SCALE | — |
| | DATE | 11-25-68 |
| MAT'L | REQ. | DR. BY <i>Shover</i> |