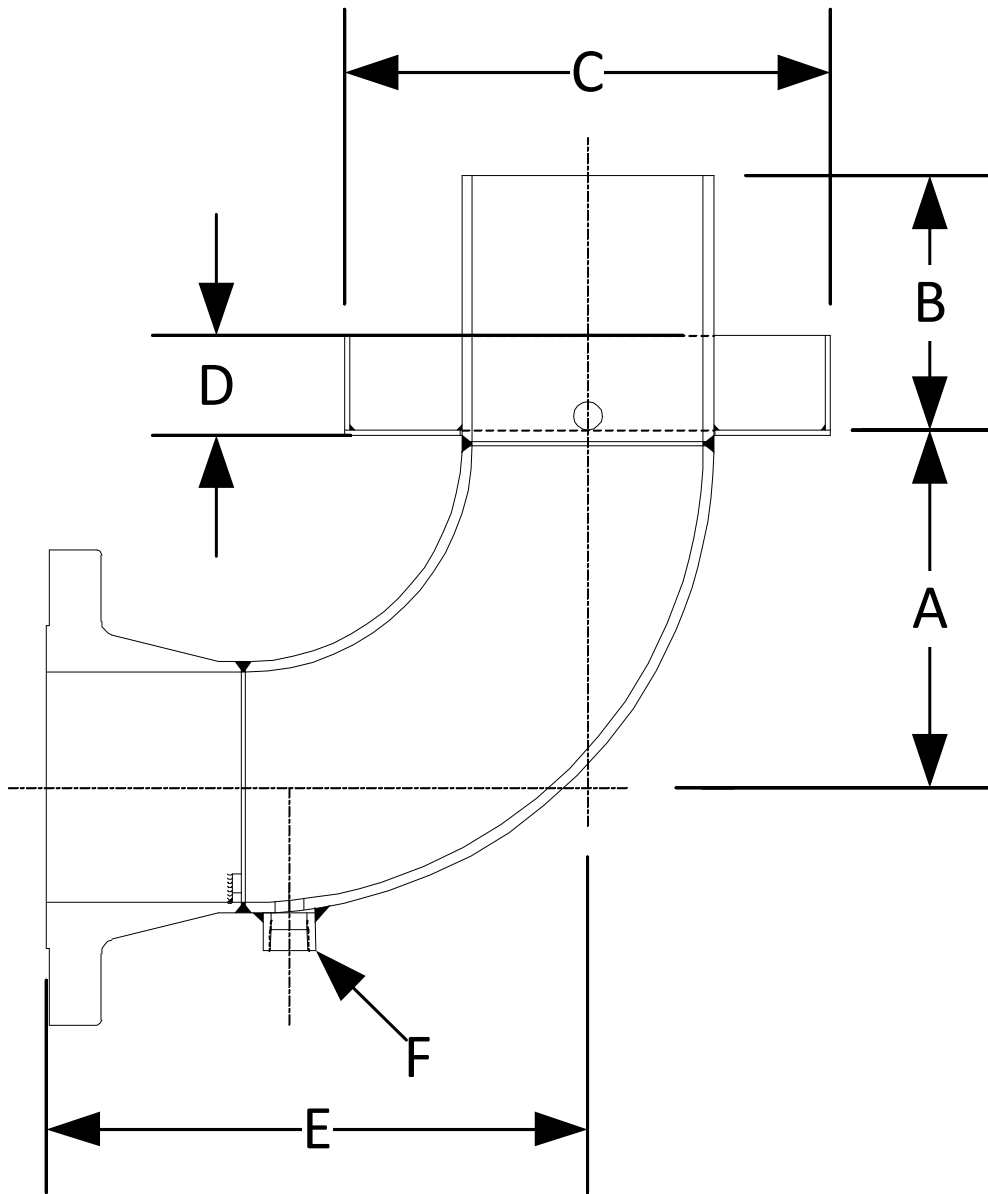


DRAWING NO.  
FDPE



PARTS LIST	
DESCRIPTION	MATERIAL
150lb RFWN Flange	Carbon Steel (ASTM A 105)B16.5
Long Radius Elbow	Carbon Steel (ASTM A 234, Grade WPB)
Drip Pan	Carbon Steel (ASTM A 36)
Pipe	Carbon Steel (ASTM A 53)
3000# NPT Half Coupling	Carbon Steel (ASTM A 105)

Size	DIMENSIONS (in)					
	A	B	C	D	E	F
2	3	2-1/2	5	1-1/2	5-1/2	3/8
2-1/2	3-3/4	3	6-3/4	2	6-1/2	3/8
3	4-1/2	3	6-3/4	2	7-1/2	1/2
4	6	6	11	2-1/2	9	1/2
6	9	7	12-3/4	3	12-1/2	1
8	12	8	18	3	16	1
10	15	8	20	3	19	1
12	18	9	22	3	22-1/2	1
14	21	10	24	4	26	1
16	24	12	28	4	29	1

**KECKLEY**

3400 CLEVELAND SKOKIE ILLINOIS

DRAWING NO.  
FDPE

DIMENSIONAL ASSEMBLY

PART NO.  
FDPE-150

150# Flg. Fabricated Drip Pan Elbow

SCALE: NTS

DATE: 03/02/2012

MAT'L: Fabricated Carbon Steel

REQ. ---

DR. BY DSF