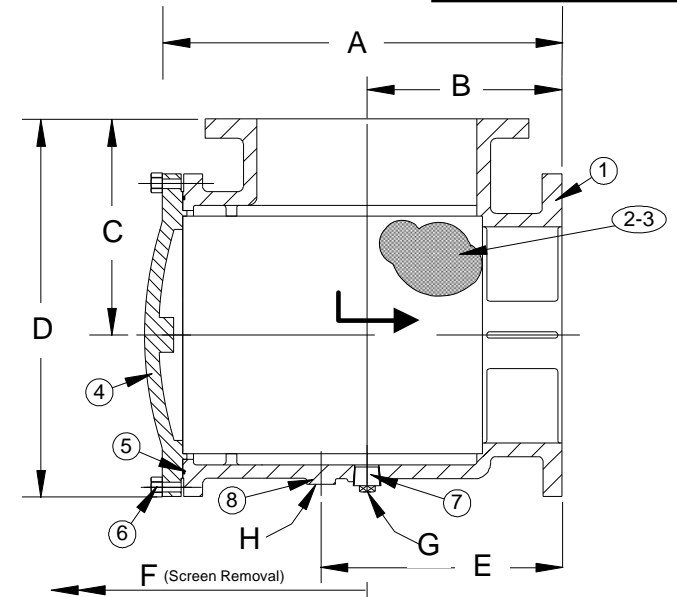


DRAWING NO.
PSD

SIZE Inlet x Outlet	A	B	C	D	E	F	G	H	WEIGHTS (lbs)
						Screen Removal	Blow Down Connection	Pipe Support I.D.	
2 X 1-1/2	10	4-1/2	4-1/2	7	6	8-13/16	3/4	1.02	24
2 X 2	10	4-1/2	4-1/2	7	6	8-13/16	3/4	1.02	24
2-1/2 X 2	10-5/8	5	5	7-13/16	6-9/16	9-1/8	3/4	1.02	27
2-1/2 X 2-1/2	10-5/8	5	5	7-13/16	6-9/16	9-1/8	3/4	1.02	37
3 X 2	10	4-1/2	5-1/2	8-1/8	6	9-5/8	3/4	1.30	42
3 X 2-1/2	11-3/16	5-1/2	5-1/2	9	7	9-5/8	3/4	1.30	46
3 X 3	11-3/16	5-1/2	5-1/2	9	7	9-5/8	3/4	1.30	51
4 X 3	13-1/8	6-1/2	6-1/2	11	8-3/4	11-1/2	1	1.30	74
4 X 4	13	6-1/2	6-1/2	11	8-1/4	11-1/2	1	1.30	76
5 X 4	15-1/2	7-1/2	7-1/2	13	10	14-7/8	1	1.30	106
5 X 5	15-1/2	7-1/2	7-1/2	13-3/4	10	14-7/8	1	1.30	111
6 X 4	13-1/8	6-1/2	8	12-3/16	8-3/4	16-9/16	1	1.30	93
6 X 5	16-5/8	8	8	14-7/16	10-11/16	16-9/16	1	1.30	128
6 X 6	16-5/8	8	8	14-1/2	10-11/16	16-9/16	1	1.30	149
8 X 5	19-3/16	9	7-9/16	13-1/8	13	16-7/8	1	1.30	178
8 X 6	16-7/8	8	9	15-1/2	10-11/16	16-7/8	1	1.30	178
8 X 8	21-3/8	9	9	17-1/4	11-5/8	22-7/8	1-1/4	2.05	267
10 X 8	21-3/16	9	11	19-1/4	11-5/8	22-7/8	1-1/4	2.05	353
10 X 10	26-11/16	11	11	20-3/4	14-3/16	30-1/4	1-1/4	2.05	388
12 X 8	21-11/16	11	11	19-1/4	13-5/8	22-7/8	1-1/4	2.05	492
12 X 10	26-11/16	11	12	21-3/4	14-3/16	33	1-1/4	2.05	492
12 X 12	26-11/16	12	12	21-3/4	15-3/8	28-3/4	1-1/4	2.05	529
14 x 10	26-11/16	12-15/16	12-9/16	22-3/16	17-3/16	33	1-1/4	2.05	507
14 x 12	26-11/16	12-15/16	12-9/16	22-3/16	17-3/16	31	1-1/4	2.05	601
14 x 14	26-11/16	12-15/16	12-9/16	22-3/16	17-3/16	33-1/8	1-1/4	2.05	620
16 x 12	29-5/16	14-5/16	13-3/16	23-3/4	18-5/8	28-3/4	1-1/4	2.05	725
16 x 14	29-5/16	14-5/16	13-3/16	23-3/4	18-5/8	31	1-1/2	2.05	750
16 x 16	29-5/16	14-5/16	13-3/16	23-3/4	18-5/8	33-1/8	1-1/2	2.05	820
18 x 18	30-15/16	15-5/16	14-9/16	26-5/16	18-13/16	-	2	2.05	-
20 x 20	33-7/16	16-7/8	16	28-3/4	20-5/16	-	2	2.05	-


Larger sizes available upon request.

Certified dimensional drawings and metric drawings available upon request.



PARTS LIST		
ITEM	DESCRIPTION	MATERIAL
1	BODY	CAST IRON (ASTM A 126, CLASS B)
2	SCREEN	STAINLESS STEEL (304) - 1/8"
3	MESH SLEEVE*	STAINLESS STEEL (304) - 20 MESH
4	COVER	CAST IRON (ASTM A 126, CLASS B)
5	O-RING	BUNA-N
6	HEX HEAD BOLT†	STEEL
7	PLUG	CAST CARBON STEEL
8	STUB	CAST IRON (ASTM A 126, CLASS B)

†Ductile Iron Knobs are available upon request.

 3400 CLEVELAND SKOKIE ILLINOIS		DRAWING NO. PSD
		PART NO.
DIMENSIONAL ASSEMBLY		SCALE: NTS
Style PSD		DATE: 07/01/2011
Cast Iron Suction Diffuser		DR. BY DSF
MAT'L: Cast Iron	REQ. ---	