

Style BVF2

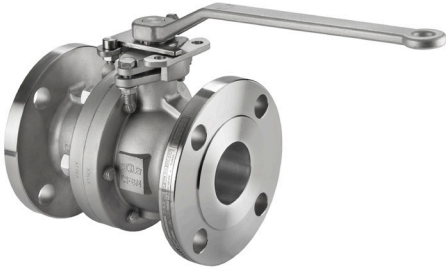
Ball Valve

Carbon Steel (ASTM A 216, Grade WCB)

150 lb. & 300 lb. Flanged

Stainless Steel (ASTM A 351, Grade CF8M)

150 lb. & 300 lb. Flanged



Split-Body Full Port Flanged Ball Valve

1½" - 8" Class 150

1½" - 6" Class 300

APPLICATIONS

Industrial and Oil/Gas piping applications requiring the higher flow capacity and lower pressure drop of full port internal flow-ways, and those applications where ease of reparability is desired.

CONSTRUCTION

The Keckley Style BVF2 Split-Body full port flanged end ball valves employ investment cast and shell cast bodies & tailpieces, all produced from ASTM grade materials that are properly heat treated and chemically finished. All wall thicknesses comply with ASME B16.34 as do bolting stress levels.

FEATURES

- 2-Piece Bolted Body, Full Port Construction
- Fully Compliant to ASME B16.34
- Fully Compliant to API 608
- Fully Compliant to API 641 for Fugitive Emissions
- API 607 6th Edition Fire-Safe
- All Models are NACE MR0175 Compliant
- Submerged Packing System & Direct Mount Actuation
- Standard ISO Actuator Mounting Pads on All Sizes
- Standard Locking Stainless Steel Handles
- Second Generation PTFE Seats Provide Higher Operating Temperatures
- Standard Electrically Grounded Ball & Stem
- All Sizes use Body Studs & Nuts for Ease of Disassembly

ORDERING

Reference *How to Order BVF2 Ball Valves* for building the Keckley Product Number.

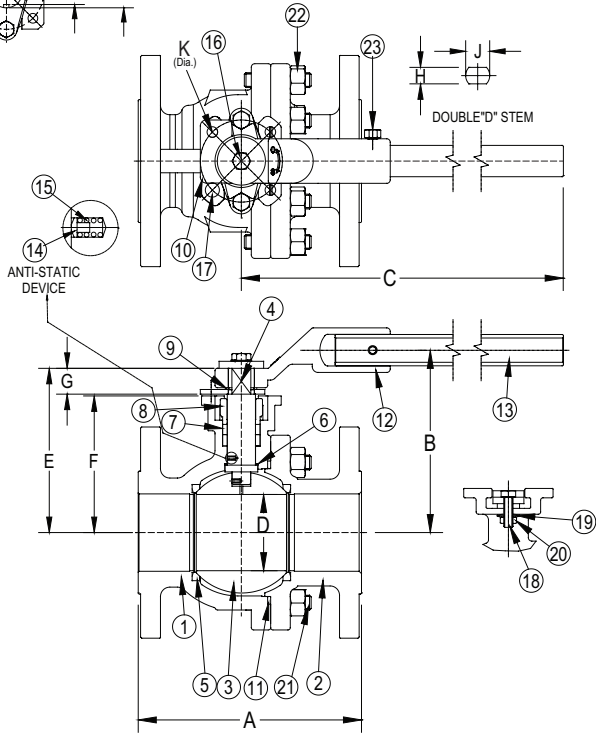
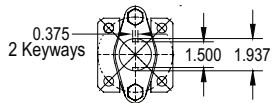
WORKING PRESSURES - NON SHOCK

NOM. RATING	MATERIAL	MEDIA	1½" to 8"	40 mm to 200 mm
ASME CLASS 150	A 216, WCB	W.O.G.	285 PSI @ 100°F	1965 KPa @ 38°C
		Saturated Steam (WSP)	200 PSI @ 388°F	1379 KPa @ 198°C
	A 351,CF8M	W.O.G.	275 PSI @ 100°F	1896 KPa @ 38°C
		Saturated Steam (WSP)	195 PSI @ 386°F	1344 KPa @ 197°C
NOM. RATING	MATERIAL	MEDIA	1½" to 6"	40 mm to 150 mm
ASME CLASS 300	A 216, WCB	W.O.G.	740 PSI @ 100°F	5102 KPa @ 38°C
		Saturated Steam (WSP)	250 PSI @ 406°F	1724 KPa @ 208°C
	A 351, CF8M	W.O.G.	720 PSI @ 100°F	4964 KPa @ 38°C
		Saturated Steam (WSP)	250 PSI @ 406°F	1724 KPa @ 208°C



TECHNICAL DATA
DIMENSIONS AND WEIGHTS

8" Class 150 Stem Design



Style BVF2

Split-body Flanged Ball Valve

PARTS LIST			
ITEM	DESCRIPTION	MATERIAL	
1	Body	A 216, WCB	A 351, CF8M
2	Tailpiece	A 216, WCB	A 351, CF8M
3	Ball	A 351, CF8M or 316SS	A 351, CF8M or 316SS
4	Stem	A 276, 316	A 276, 316
5	Seat (2)	R-PTFE	R-PTFE
6	Thrust Washer	PTFE	PTFE
7	Stem Packing	Graphite	Graphite
8	Packing Gland	A 351, CF8M	A 351, CF8M
9	Retaining Ring	300 Series SS	300 Series SS
10	Lock Plate	304SS	304SS
11	Body Gasket	Graphite	Graphite
12	Handle	300 Series SS	300 Series SS
13	Handle Extension*	Carbon Steel	Carbon Steel
14	Grounding Ball (2)	316SS	316SS
15	Grounding Spring (2)	304SS	304SS
16	Handle Bolt	304SS	304SS
17	Stop Bolt	304SS	304SS
18	Packing Bolt (2)	A 193, B8	A 193, B8
19	Belleville Washers	300 Series SS	300 Series SS
20	Packing Nut (2)	A 194, 8	A 194, 8
21	Body Stud Bolts	A 193, B7	A 193, B8
22	Body Nuts	A 194, 2H	A 194, 8
23	Handle Ext. Bolt*	304SS	304SS

Note: Size 2-1/2" to 6" only.

SIZE	DIMENSIONS																		
	A		B		C		D		E										
	150 lb.	300 lb.	150 lb.	300 lb.	150 lb.	300 lb.	150 lb. & 300 lb.	150 lb.	300 lb.										
1-1/2	in 40	mm 6.5	in 165.1	mm 7.50	in 190.5	mm 4.88	in 123.95	mm 4.96	in 125.98	in 10.02	mm 254.51	in 10.02	mm 254.51	in 2.00	mm 50.8	in 4.45	mm 113.03	in 4.53	mm 115.06
2	in 50	mm 7.0	in 177.8	mm 8.50	in 215.9	mm 5.20	in 132.08	mm 5.30	in 134.62	in 10.02	mm 254.51	in 10.02	mm 254.51	in 2.00	mm 50.8	in 4.45	mm 113.03	in 4.53	mm 115.06
*2-1/2	in 65	mm 7.5	in 190.5	N/A		in 6.12	mm 155.45	N/A		in 15.94	mm 404.88	N/A		in 2.50	mm 63.5	in 5.51	mm 139.95	N/A	
3	in 80	mm 8.0	in 203.2	in 11.12	mm 284.5	in 6.81	mm 172.97	in 6.23	mm 158.24	in 15.94	mm 404.88	in 15.94	mm 404.88	in 3.00	mm 76.2	in 6.20	mm 157.48	in 6.20	mm 157.48
4	in 100	mm 9.0	in 228.6	in 12.00	mm 304.8	in 7.72	mm 196.09	in 7.31	mm 185.67	in 18.11	mm 459.99	in 18.11	mm 459.99	in 4.00	mm 101.6	in 7.16	mm 181.86	in 7.16	mm 181.86
6	in 150	mm 15.5	in 393.7	in 15.88	mm 403.4	in 9.88	mm 250.95	in 9.55	mm 242.57	in 24.02	mm 610.11	in 24.61	mm 625.09	in 6.00	mm 152.4	in 9.35	mm 237.49	in 9.35	mm 237.49
*8	in 200	mm 18.0	in 457.2	N/A		N/A		N/A		N/A		in 8.00	mm 203.2	in 13.33	mm 338.58	N/A		N/A	

SIZE	DIMENSIONS														ISO PATTERN			
	F		G		H		J		K									
	150 lb.	300 lb.	150 lb. & 300 lb.	150 lb.	300 lb.	150 lb.	300 lb.	150 lb. & 300 lb.	150 lb. & 300 lb.									
1-1/2	in 40	mm 3.35	in 85.09	in 3.43	mm 87.12	in 0.77	mm 19.56	in 0.55	mm 13.97	in 0.55	mm 13.97	in 0.71	mm 18.03	in 0.71	mm 18.03	in 2.76	mm 70.0	F07
2	in 50	mm 3.64	in 92.46	in 3.72	mm 94.49	in 0.77	mm 19.56	in 0.55	mm 13.97	in 0.55	mm 13.97	in 0.71	mm 18.03	in 0.71	mm 18.03	in 2.76	mm 70.0	F07
*2-1/2	in 65	mm 4.59	in 116.59	N/A		in 0.87	mm 22.10	in 0.67	mm 17.02	N/A		in 0.87	mm 22.10	N/A		in 2.76	mm 70.0	F07
3	in 80	mm 5.28	in 134.11	in 5.28	mm 134.11	in 0.87	mm 22.10	in 0.67	mm 17.02	in 0.67	mm 17.02	in 0.87	mm 22.10	in 0.87	mm 22.10	in 2.76	mm 70.0	F07
4	in 100	mm 6.18	in 156.97	in 6.18	mm 156.97	in 0.91	mm 23.11	in 0.67	mm 17.02	in 0.67	mm 17.02	in 1.03	mm 26.16	in 1.03	mm 26.16	in 4.02	mm 102.0	F10
6	in 150	mm 7.80	in 198.12	in 7.80	mm 198.12	in 1.50	mm 38.10	in 0.91	mm 23.11	in 0.91	mm 23.11	in 1.37	mm 34.80	in 1.37	mm 34.80	in 4.02 & 4.92	mm 102.0 & 125.0	F10 & F12
8	in 200	mm 10.45	in 265.43	N/A		in 2.87	mm 72.90	N/A		N/A		N/A		in 5.51	mm 140	N/A		F14

*2-1/2" & 8" only offered in 150lb Class.

Certified dimensional drawings are available upon request.

*This table reflects only the nearest metric equivalents.

WEIGHTS

Size	1-1/2"	2"	2-1/2"	3"	4"	6"	8"
150	lbs	15.4	21.8	37.0	47.1	83.6	178.9
	kgs	7.0	9.9	16.8	21.4	37.9	81.1
300	lbs	25.5	32.0	N/A	74.0	122.7	262.0
	kgs	11.6	14.5	N/A	33.6	55.7	118.8

MAX TORQUES (in/lb)

Size	1-1/2"	2"	2-1/2"	3"	4"	6"	8"
150 lb	300	400	600	1000	2000	3800	8000
300 lb	300	400	N/A	1000	2000	3800	N/A

FLOW COEFFICIENTS

Size	C _v
1-1/2"	285
2"	500
2-1/2"	550
3"	1300
4"	2500
6"	5250
8"	10400

PRESSURE vs. TEMPERATURE CHART

